



# LONG RANGE FUEL TANKS

## VWAR1

Brown Davis Automotive Pty. Ltd.  
ABN: 72 657 573 544

Copyright Brown Davis Automotive Pty. Ltd. This document contains technical information the property of Brown Davis Automotive Pty. Ltd.

### VOLKSWAGEN AMAROK 2011- PRESENT – 135lt REPLACEMENT TANK LONG RANGE FUEL TANK PARTS LIST AND FITTING INSTRUCTIONS PART NUMBER: VWAR1

Item #	Description	Quantity	Part No.	P	C
1	TANK—REPLACEMENT	1	VWAR1	-	-
2	DRAIN PLUG—MAGNETIC—M14 (FITTED TO THE TANK)	1	DP-M14	-	-
3	HOSE – TMP - 6mm (breather tube)	0.9m			
4	HOSE – FUEL AND EMISSIONS - 6mm	800mm			
5	HOSE – FUEL AND EMISSIONS - 10mm	700mm			
6	HOSE – TMP – 16mm	485mm			
7	HOSE – TMP – 16mm	230mm			
8	HOSE CLAMP – NORMA – 12mm	1			
9	HOSE CLAMP – NORMA - 13mm	2			
10	HOSE CLAMP – STAINLESS - 8-16mm	2			
11	HOSE CLAMP – STAINLESS – 12-22mm	4			
12	HOSE CLAMP – STAINLESS – 32-50mm	1			
13	BRASS – ELBOW – 5/8" x 3/8" BSP	1			
14	BRASS – T PIECE – 5/8" x 3/8" BSP	1			
15	DISCRIMINATOR VALVE	1			
16	DISCRIMINATOR VALVE SEAL	1			
17	WASHER – PANEL WASHER - M10	6			
18	NUT – NYLOC - ZINC PLATED – M10	1			
19	SET SCREW – HEX – M10 X 100mm – PLATED 8.8	1			
20	WARRANTY INFORMATION SHEET	1			
21	BROWN DAVIS AUTOMOTIVE STICKER	1			

	STAFF MEMBERS INITIALS	DATE
KIT PACKED BY		
KIT CHECKED BY		

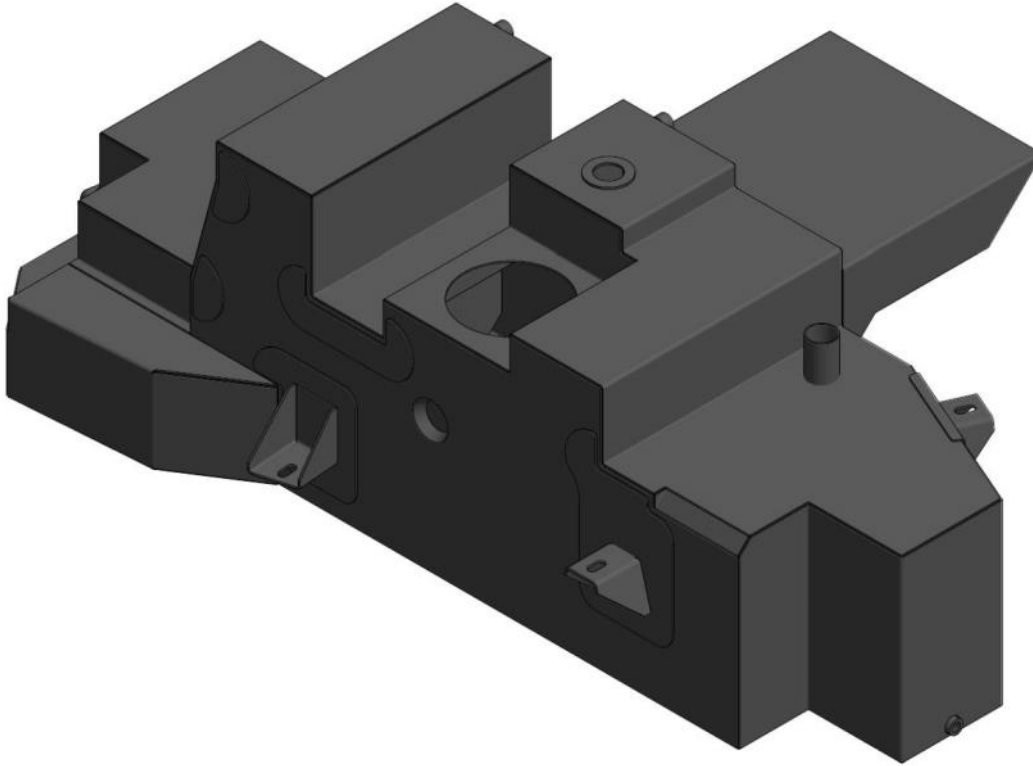
DATE LAST EDITED: 30/04/2014

0  
10  
20  
30  
40  
50  
60  
70  
80  
90  
100  
110  
120  
130  
140  
150  
160  
170  
180  
190  
200  
210  
220  
230  
240  
250  
260  
270

Brown Davis Automotive Pty. Ltd.  
ABN: 72 657 573 544

Copyright Brown Davis Automotive Pty. Ltd. This document contains technical information the property of Brown Davis Automotive Pty. Ltd.

#### VWAR1 – 135lt REPLACEMENT TANK LONG RANGE FUEL TANK PARTS LIST AND FITTING INSTRUCTIONS PART NUMBER: VWAR1



**WARNING:**

**THIS FUEL TANK IS HEAVY. DO NOT ATTEMPT TO LIFT THIS FUEL TANK WITHOUT APPROPRIATE ASSISTANCE OR SERIOUS INJURY MAY RESULT**



**WARNING:**

**ENSURE A FIRE EXTINGUISHER IS AVAILABLE WHILST WORKING NEAR EXPOSED FUEL**



**-CHECK CONTENTS OF KIT BEFORE COMMENCING FITMENT**

**-DRAIN VEHICLE FUEL TANK TO LOWEST LEVEL POSSIBLE BEFORE COMMENCING FITMENT**

**-BEFORE INSTALLATION THE BROWN DAVIS LONG RANGE TANK SHOULD BE WASHED OUT WITH THE SAME FUEL TYPE AS THE VEHICLE IT'S BEING FITTED TO**

**Any questions or information required in relation to the below instructions please do not hesitate to contact Brown Davis head office or one of our distributors.**

**Phone: +61 (3) 9762 8722**

**Email: [info@browndavis.com.au](mailto:info@browndavis.com.au)**

Brown Davis Automotive Pty. Ltd.

47 Holloway Drive, Bayswater, Victoria, Australia 3153

Ph: +61 (3) 9762 8722 | Fax: +61 (3) 9762 9829 | Email: [info@browndavis.com.au](mailto:info@browndavis.com.au) | Web: [www.browndavis.com.au](http://www.browndavis.com.au)

Brown Davis Automotive Pty. Ltd.  
ABN: 72 657 573 544

Copyright Brown Davis Automotive Pty. Ltd. This document contains technical information the property of Brown Davis Automotive Pty. Ltd.

#### REMOVAL OF STANDARD TANK

1. Mark tail shaft to rear differential flange to ensure re-fitting to original orientation. Remove drive shaft at diff end and tie drive shaft out of the way, to the side, under exhaust.

2. Disconnect fast fill and filler hoses from the rear of the standard tank.



3. Disconnect fuel lines (pick-up and return) from the passenger side of the tank along the chassis rail.



4. With a lifting device in place, undo all bolts holding tank.

- Lower enough to disconnect the wiring loom from the top of the sender unit.
- Carefully remove tank and place on bench or ground. Avoid fuel spills by not tipping the tank.



#### SET-UP OF NEW REPLACEMENT TANK

5. Disconnect the fuel lines from the sender unit. Take note of where they came from.
- Using sharp knife cut and remove the elbows from both ends of the plastic lines. Be careful to not damage the elbows as they are to be reused with rubber hose and clamps provided.

NOTE: two different lengths. One is supply and one is return. Ensure correct lengths are used in the correct position.

- Fit 8mm rubber hose supplied to elbows and tighten clamps.
- Discard the plastic lines.



6. Remove fuel sender unit. This requires a special tool. In the absence of the special tool, the sender outer ring can be undone using a hammer and a blunt piece of metal. Tap lightly on alternating sides of the ring changing ribs regularly to avoid breaking ribs.



7. Fit gauge into Brown Davis tank with original gauge ring and seal.

- FITTING TIP: Soak screw ring in boiling water for a couple of minutes and then screw it on the tank straight away
- Look down the discriminator valve hole. Check and make sure the sender unit is fitted correctly. (NOTE: Fuel sender unit may not necessarily go into the same position as the original tank. The float should be parallel with the fuel box.)

Supply

Return



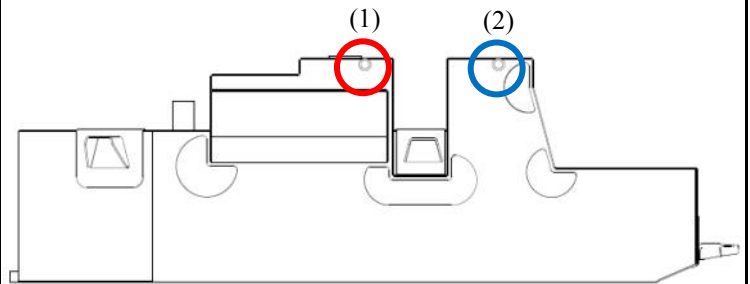
8. Fit discriminator valve seal, discriminator valve and 6mm TMP hose with supplied clamp to the top of tank.



Brown Davis Automotive Pty. Ltd.  
ABN: 72 657 573 544

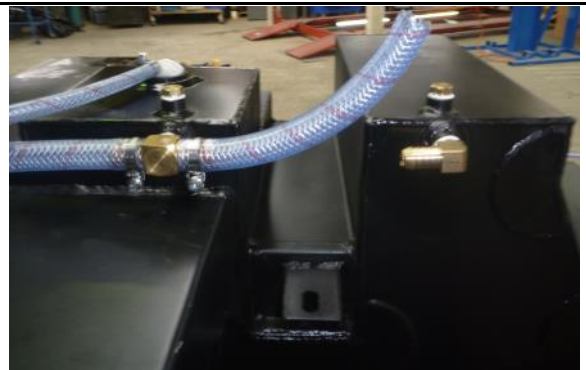
Copyright Brown Davis Automotive Pty. Ltd. This document contains technical information the property of Brown Davis Automotive Pty. Ltd.

9. Fit the 3/8" x 5/8" BSP T piece into socket (1) and the 3/8" x 5/8 elbow into socket (2).



10. Fit the 230mm length of 16mm TMP hose in between the T-piece and elbow leaving the longer piece for the fast fill.

NOTE: Do not attach the second end of hose to elbow until the tank is in place. Then fit hose over cross member on to 5/8 elbow and do up the clamp.



11. Carefully cut the standard plastic white fast fill hose off as per photo, so the inner plastic connector can be reused.

- Connect the leftover 485mm length of 16mm TMP to the other side of the T-piece.
- This will connect to where the white plastic line was cut once tank is in place.



Brown Davis Automotive Pty. Ltd.  
ABN: 72 657 573 544

Copyright Brown Davis Automotive Pty. Ltd. This document contains technical information the property of Brown Davis Automotive Pty. Ltd.

#### INSTALLING OF REPLACEMENT TANK

12. Use lifting device to lift tank in to place slowly. While lifting the tank up, place the 6mm TMP hose into the body cavity above the discriminator valve and cut to size if necessary.

  - Place all fuel lines over the centre cross-member when lifting the tank into position.



13. Keep lifting making sure to plug in the sender wire and that no fuel lines or breather hoses get crushed or kinked.

14. Plug the 2 fuel lines back on the car at the left hand side, attach filler hose and the fast fill breather hose, using the standard clamps, to the tank.

NOTE: Route the fuel lines as best you can making sure they don't kink.



15. Fit SET SCREW - HEX - M10 x 100mm, through the original hole in the front cross member. You may have to drill through the top of the cross member for the bolt to go through.



Brown Davis Automotive Pty. Ltd.

ABN: 72 657 573 544

Copyright Brown Davis Automotive Pty. Ltd. This document contains technical information the property of Brown Davis Automotive Pty. Ltd.

16. Fit the standard tank bolts to the left and right brackets on tank, and tighten.



17. Double check all fuel line clamps and fuel lines are in a secure location. Fill tank and check for leaks. Road test and check for rattlers & squeaks. Re-check for fuel leaks.