

Brown Davis Automotive Pty. Ltd.  
ABN: 72 657 573 544

Copyright Brown Davis Automotive Pty. Ltd. This document contains technical information the property of Brown Davis Automotive Pty. Ltd.

**TOYOTA LANCRUISER 79 SERIES (2007 to PRESENT) – 110lt AUXILIARY TANK  
AUXILIARY FUEL TANK PARTS LIST AND FITTING INSTRUCTIONS  
PART NUMBER: TL79A2**

Item #	Description	Quantity	Part No.	P	C
1	TANK—AUXILIARY PART 1	1	TL79A2-P1	-	-
2	TANK—AUXILIARY PART 2	1	TL79A2-P2	-	-
3	DRAIN PLUG—MAGNETIC—M14 (FITTED TO THE TANK)	1		-	-
4	HOSE – FUEL EMISSION - 8mm	1.75m			
5	HOSE – HORIZON - 16mm	1.6m			
6	HOSE – HORIZON - 16mm	100mm			
7	HOSE – HORIZON - 16mm	550mm			
8	HOSE – FILLER – 35mm	110mm			
9	HOSE – FILLER – 44mm	100mm			
10	HOSE CLAMP – STAINLESS – 8-16mm	6			
11	HOSE CLAMP – STAINLESS – 12-22mm	10			
12	HOSE CLAMP – STAINLESS – 32-50mm	2			
13	HOSE CLAMP – STAINLESS – 40-60mm	2			
14	FUEL PICK UP – 5/16" x 1/4" BSP ELBOW *CUT 380mm FROM THREAD*	1			
15	BRASS FITTING - ELBOW - 5/16" x 1/8" BSP	1			
16	BRASS FITTING - TAIL BARB - 5/16" x 1/8" BSP	1			
17	BRASS FITTING - TAIL BARB - 5/8" x 1/4" BSP	2			
18	BRASS FITTING - ELBOW - 5/8" x 1/4" BSP	2			
19	Y-PIECE – 16mm x 16mm x 8mm	1			
20	T-PIECE – 16mm	1			
21	CABLE TIE - 8" BLACK	12			
22	FUEL GUAGE/SWITCH – CP 309GS LED DASH UNIT	1			
23	BUZZER – PEEL – CP 5	1			
24	WIRE – TWIN CORE – 3.0mm – BROWN/WHITE—WITH PLUG	5m			
25	CRIMP FITTING – SPADE FEMALE 6mm - INSULATED - RED	1			
26	CRIMP FITTING – SPADE FEMALE 4mm - RED	1			
27	CRIMP FITTING - RING 5MM - RED	1			
28	CRIMP FITTING – JOINER 3mm - RED	1			
29	SCOTCH LOCK	1			

**KIT CONTINUES ON NEXT PAGE**



**LONG RANGE FUEL TANKS**  
**TL79A2**

Brown Davis Automotive Pty. Ltd.  
ABN: 72 657 573 544

Copyright Brown Davis Automotive Pty. Ltd. This document contains technical information the property of Brown Davis Automotive Pty. Ltd.

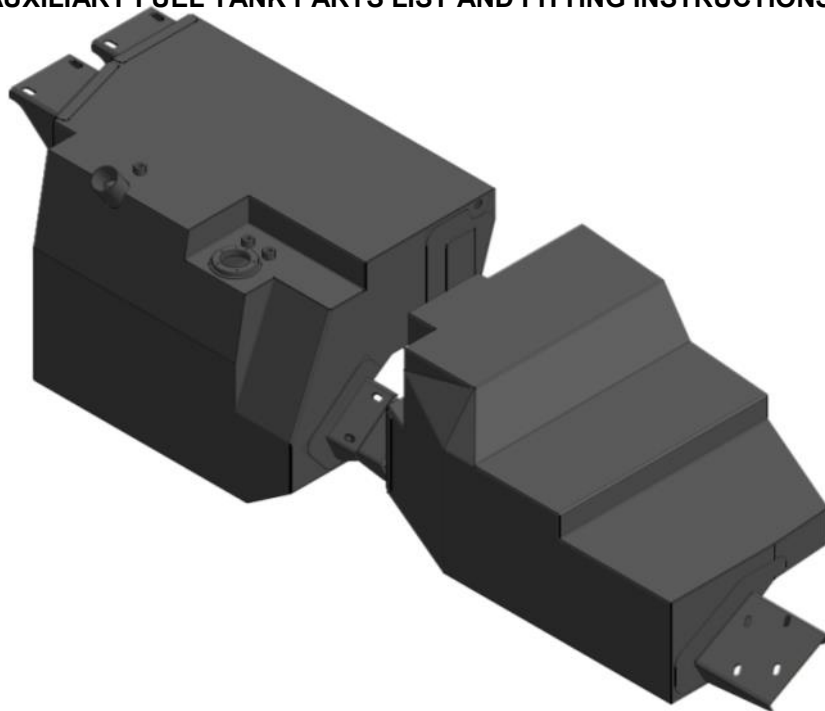
Item #	Description	Quantity	Part No.	P	C
30	SENDER UNIT - VDO 220-004— <i>FITTED TO TANK</i>	1			
31	FUEL PUMP – POSI-FLO	1			
32	FUEL FILTER – INLINE – 8mm	1			
33	FUEL CAP - LOCKABLE - TRIDON - DIESEL	1	TFL234D		
34	C CLAMP EXHAUST - 5/16" THREAD - C10 2'1/4"	2			
35	SET SCREW – PAN HEAD – M4 x 10mm – PLATED 8.8	5			
36	WASHER – SPRING PLATED – M4	5			
37	SET SCREW – HEX – M6 x 20mm – PLATED 8.8	2			
38	WASHER – FLAT PLATED – M6	4			
39	NUT- PLATED – M6	2			
40	SET SCREW – HEX – M8 x 30mm – PLATED 8.8	2			
41	WASHER – SPRING PLATED – M8	2			
42	WASHER – PANEL PLATED – M8	4			
43	WASHER – FLAT PLATED – M8	3			
44	NUT – NYLOCK PLATED – M10	2			
45	SET SCREW – HEX – M10 x 25mm – PLATED 8.8	6			
47	SET SCREW – HEX – M10 x 30mm – PLATED 8.8	3			
48	WASHER – SHAKE PROOF PLATED – M10	9			
49	WASHER – FLAT PLATED – M10	14			
50	NUT - PLATED – M10	10			
51	FILLER TUBE CAP THREAD <i>*ATTACH TO FILLER TUBE*</i>	1			
52	FILLER TUBE	1	FT-TL79A2		
53	CROSSMEMBER	1	CM-TL79A2		
54	CROSSMEMBER - U SHAPED BRACKET-95mm	1			
55	CROSSMEMBER - U SHAPED BRACKET-60mm	1			
56	WARRANTY CARD & INFORMATION	1			
57	BROWN DAVIS AUTOMOTIVE STICKER	1			

	<b>STAFF MEMBERS INITIALS</b>	<b>DATE</b>
<b>KIT PACKED BY</b>		
<b>KIT CHECKED BY</b>		

Brown Davis Automotive Pty. Ltd.  
ABN: 72 657 573 544

Copyright Brown Davis Automotive Pty. Ltd. This document contains technical information the property of Brown Davis Automotive Pty. Ltd.

### PART NUMBER: TL79A2 AUXILIARY FUEL TANK PARTS LIST AND FITTING INSTRUCTIONS



#### WARNING:

**THIS FUEL TANK IS HEAVY. DO NOT ATTEMPT TO LIFT THIS FUEL TANK WITHOUT APPROPRIATE ASSISTANCE OR SERIOUS INJURY MAY RESULT**



#### WARNING:

**ENSURE A FIRE EXTINGUISHER IS AVAILABLE WHILST WORKING NEAR EXPOSED FUEL**



- CHECK CONTENTS OF KIT BEFORE COMMENCING FITMENT
- DRAIN VEHICLE FUEL TANK TO LOWEST LEVEL POSSIBLE BEFORE COMMENCING FITMENT
- BEFORE INSTALLATION THE BROWN DAVIS LONG RANGE TANK SHOULD BE WASHED OUT WITH THE SAME FUEL TYPE AS THE VEHICLE IT'S BEING FITTED TO
- ANY WIRING SHOULD BE DONE BY A PROFESSIONAL

Any questions or information required in relation to the below instructions please do not hesitate to contact Brown Davis head office or one of our distributors.

Phone: +61 (3) 9762 8722  
Email: [info@browndavis.com.au](mailto:info@browndavis.com.au)

Brown Davis Automotive Pty. Ltd.  
ABN: 72 657 573 544

Copyright Brown Davis Automotive Pty. Ltd. This document contains technical information the property of Brown Davis Automotive Pty. Ltd.

1. Mark tail shaft to rear differential flange to ensure re-fitting to original orientation.
- Undo the tail shaft at the rear then move and secure it to the side .

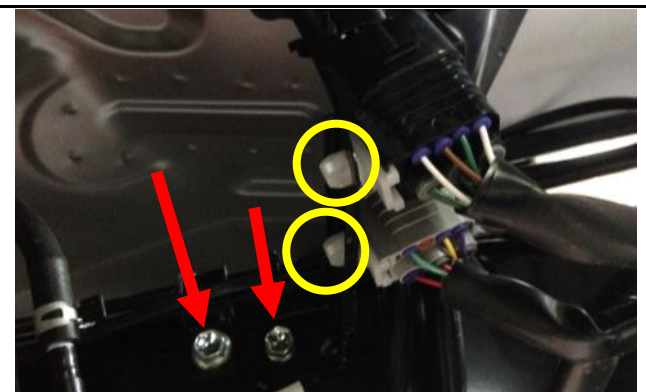


2. Cut the plastic knobs off the fuel line clips.



3. Remove the bracket that is holding the wiring looms to the chassis by first unclipping the plugs from the bracket (yellow circles in photo) and then remove the two bolts (red arrows in photo).

- Secure the looms with cable ties.



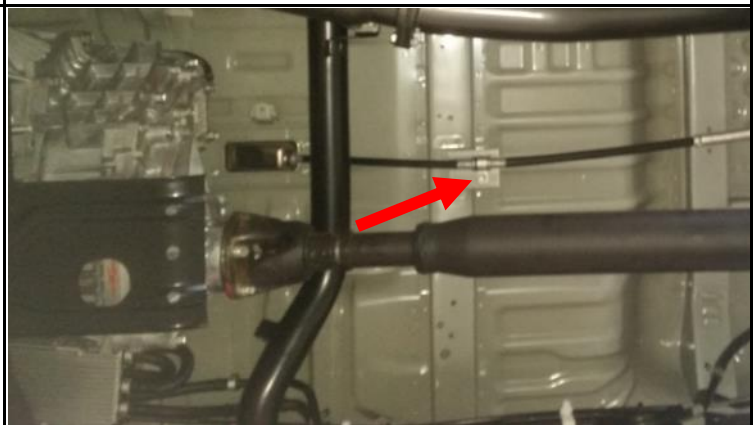
Brown Davis Automotive Pty. Ltd.  
ABN: 72 657 573 544

Copyright Brown Davis Automotive Pty. Ltd. This document contains technical information the property of Brown Davis Automotive Pty. Ltd.

4. Disconnect the hand brake bracket by removing the bolts in the chassis.
- Disconnect the bracket from black arm by removing the bolt shown in the photo.
  - Cut the rubber at the point shown in the photo.
  - Keep the bracket with the yellow arrow to be attached to new fuel tank at a later stage.



5. Undo the bolt shown in photo to free the hand brake cable completely.



Brown Davis Automotive Pty. Ltd.  
ABN: 72 657 573 544

Copyright Brown Davis Automotive Pty. Ltd. This document contains technical information the property of Brown Davis Automotive Pty. Ltd.

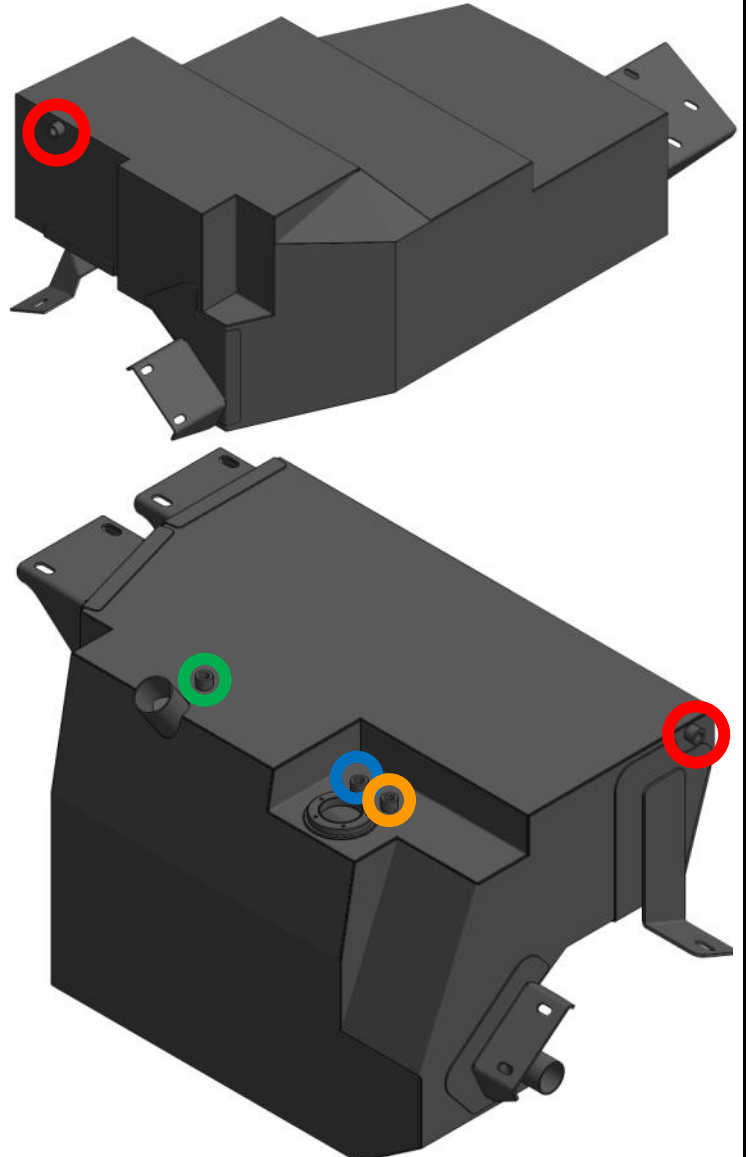
6. Install all brass fittings using thread sealant, teflon tape or the like on the threads to the appropriate sockets.

**FUEL PICK UP – 5/16" x 1/4" BSP ELBOW CIRCLED BLUE**

**BRASS FITTING - ELBOW - 5/8" x 1/4" BSP CIRCLED GREEN**

**BRASS FITTING - ELBOW - 5/8" x 1/4" BSP CIRCLED ORANGE**

- ⇒ Note: The sockets circled **RED** stay free until tanks are fitted to vehicle.



7. Connect the length of **HOSE – FUEL EMISSION - 8mm** to the **FUEL PICK UP – 5/16" x 1/4" BSP ELBOW**.

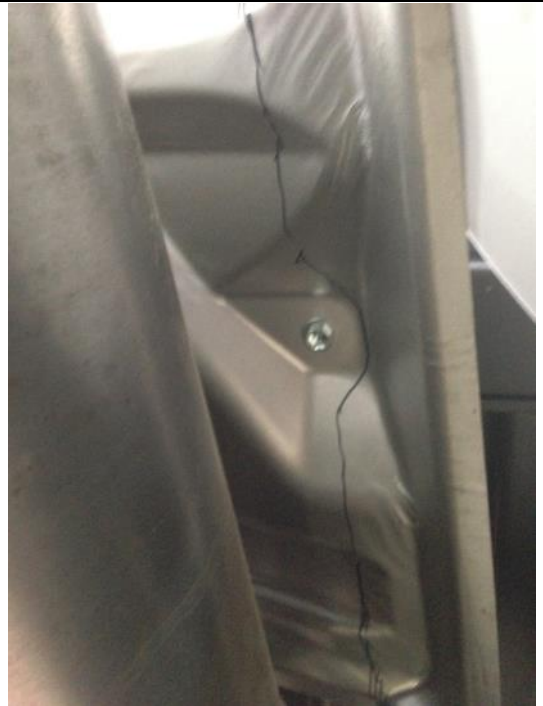
- Connect the length of **HOSE – HORIZON - 16mm** to the **BRASS FITTING - ELBOW - 5/8" x 1/4" BSP**.



Brown Davis Automotive Pty. Ltd.  
ABN: 72 657 573 544

Copyright Brown Davis Automotive Pty. Ltd. This document contains technical information the property of Brown Davis Automotive Pty. Ltd.

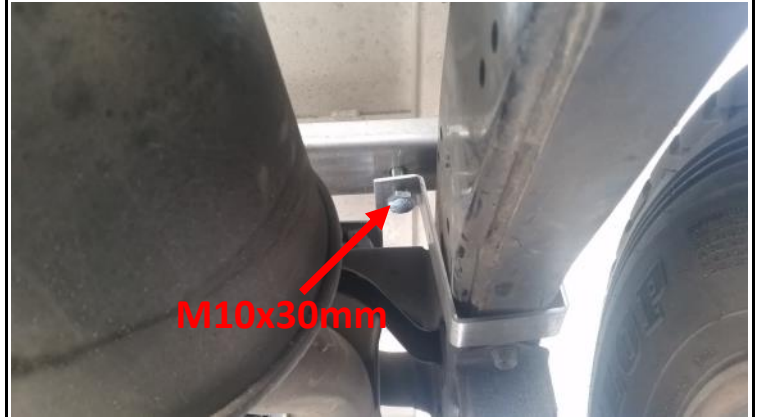
8. Remove the exhaust heat shield and trim down, *as shown in photo's.*



Brown Davis Automotive Pty. Ltd.  
ABN: 72 657 573 544

Copyright Brown Davis Automotive Pty. Ltd. This document contains technical information the property of Brown Davis Automotive Pty. Ltd.

9. Fit the CROSSMEMBER to the chassis.
- The wider of the 2 U-shaped brackets mounts to the driver side just rearward of the brake proportioning valve.
  - Use the 30mm M10 bolts on the holes at the inside of the chassis.



10. Fit the supplied brass fittings to the **FUEL PUMP – POSI-FLO**.
- Mount the **FUEL PUMP – POSI-FLO** to the supplied CROSSMEMBER.
  - Connect the black wire to the chassis to earth the pump.






11. Run the WIRE – TWIN CORE – 3.0mm – BROWN/WHITE—WITH PLUG from the dash to the tank location down the driver side of chassis, ensuring the wire is safe. Feed the wire through an existing loom or grommet, leaving approximately 800mm hanging just behind the cab of vehicle.
- The end with the plug should be in the vehicles cab at the dash.
  - Brown Davis recommends to follow existing the brake line, cable tying as you go.



Brown Davis Automotive Pty. Ltd.  
 ABN: 72 657 573 544

Copyright Brown Davis Automotive Pty. Ltd. This document contains technical information the property of Brown Davis Automotive Pty. Ltd.

<p>12. Connect the <b>CRIMP FITTING – JOINER 3mm - RED</b> to the red wire on the <b>FUEL PUMP – POSI-FLO</b>.</p> <ul style="list-style-type: none"> <li>Join the white wire to the opposite end of the <b>CRIMP FITTING – JOINER 3mm - RED</b>.</li> <li><b>NOTE:</b> The white wire should be trimmed first to avoid excess wire. Keep off cut wire for later step.</li> </ul>	
<p>13. Using a lifting device jack the rear tank into position.</p> <ul style="list-style-type: none"> <li>Before the tank is in its final position the wiring must be connected to the sender unit, see steps 14 &amp; 15.</li> <li>Line the front bracket with the captive in the chassis.</li> <li>Check the positioning of the rear <b>CROSSMEMBER</b> to ensure it is positioned correctly forward aft.</li> <li>Drill holes through the <b>CROSSMEMBER</b> and secure rear of tank.</li> </ul>	
<p>14. Attach the <b>CRIMP FITTING – SPADE FEMALE 6mm - INSULATED - RED</b> to the brown wire so it can be plugged to the center plug on the <b>SENDER UNIT - VDO 220-004</b> (circled in photo) that is fitted to the tank.</p> <ul style="list-style-type: none"> <li><b>NOTE:</b> The brown wire should be trimmed first to avoid excess wire.</li> </ul>	
<p>15. The sender unit must also be earthed.</p> <ul style="list-style-type: none"> <li>Using the white off cut wire connect the <b>CRIMP FITTING - RING 5MM - RED</b> to one end and the <b>CRIMP FITTING – SPADE FEMALE 4mm - RED</b> to the other.</li> <li>Plug the <b>CRIMP FITTING – SPADE FEMALE 4mm - RED</b> to the <b>SENDER UNIT - VDO 220-004</b> (circled in photo).</li> <li>Connect the <b>CRIMP FITTING - RING 5MM - RED</b> to the chassis.</li> </ul>	

Brown Davis Automotive Pty. Ltd.  
ABN: 72 657 573 544

Copyright Brown Davis Automotive Pty. Ltd. This document contains technical information the property of Brown Davis Automotive Pty. Ltd.

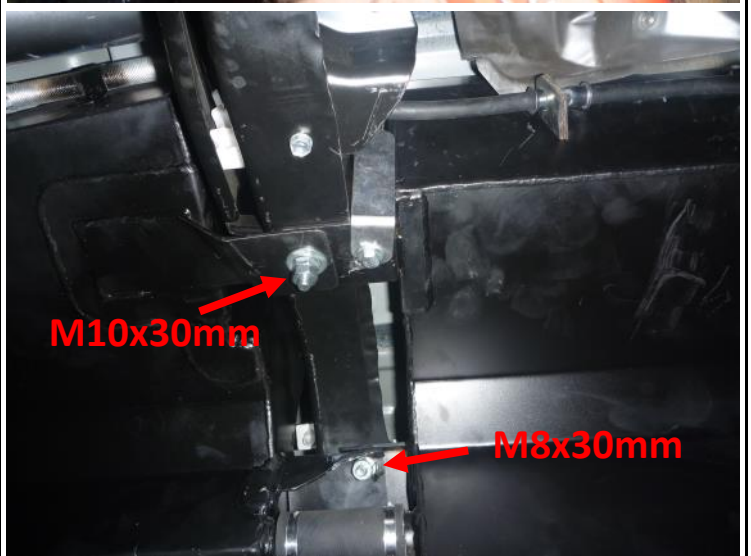
16. Using lifting device jack the front tank into position.

- With saddles in place use the two **C CLAMP EXHAUST - 5/16" THREAD - C10 2'1/4"** to fasten the front bracket to the chassis.



17. Drill through the chassis rail using the bracket holes for positioning.

- Fasten using hardware supplied.



Brown Davis Automotive Pty. Ltd.  
ABN: 72 657 573 544

Copyright Brown Davis Automotive Pty. Ltd. This document contains technical information the property of Brown Davis Automotive Pty. Ltd.

18. Drill through the CROSSMEMBER and fasten the rear of the tank. Double nut for extra security.



19. Fit the 2x **BRASS FITTING - TAIL BARB - 5/8" x 1/4" BSP** into the remaining sockets, using sealant, teflon tape or the like.



20. Using the **HOSE - FILLER - 35mm** join the two tank tubes.



21. Using the 100mm length of **HOSE - HORIZON - 16mm** connect the two **BRASS FITTING - TAIL BARB - 5/8" x 1/4"** fitted in step 19.

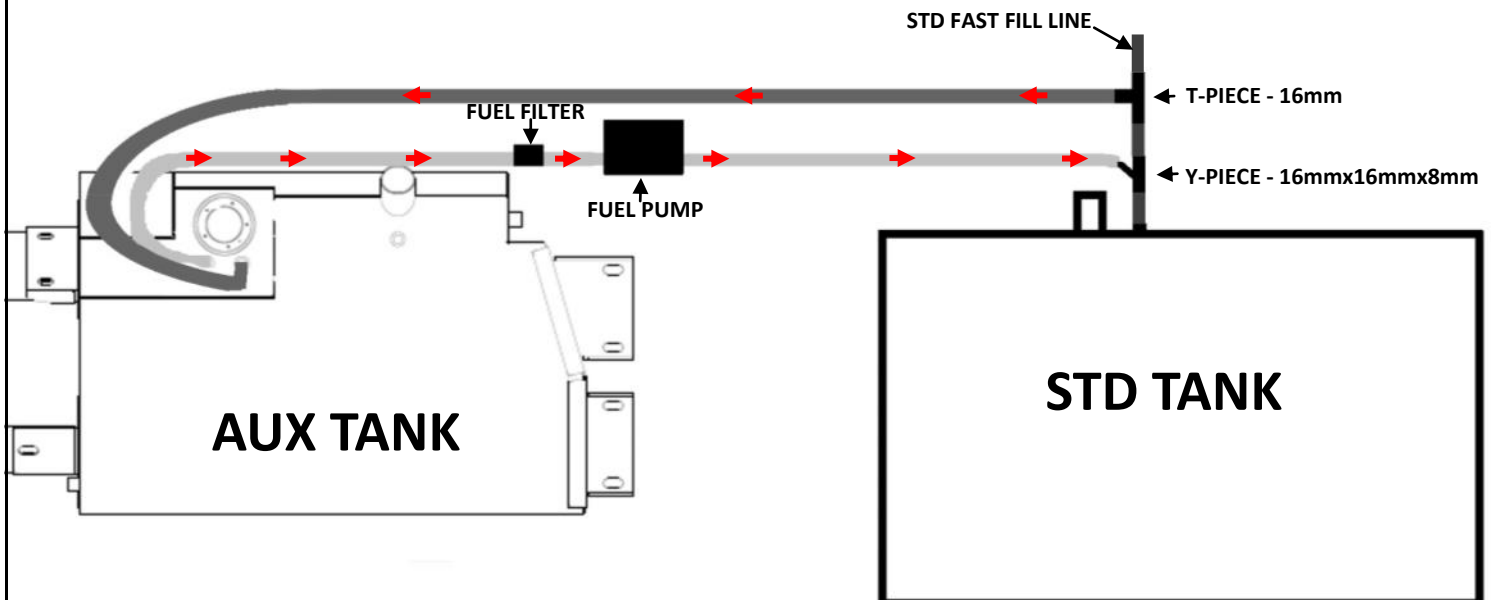


Brown Davis Automotive Pty. Ltd.  
ABN: 72 657 573 544

Copyright Brown Davis Automotive Pty. Ltd. This document contains technical information the property of Brown Davis Automotive Pty. Ltd.

22. Install the supplied **Y-PIECE - 16mm x 16mm x 8mm** and the **T-PIECE - 16mm** to the fast fill breather line. Ensure that the **T-PIECE - 16mm** is higher than the **Y-PIECE - 16mm x 16mm x 8mm**.

- Connect the **HOSE – HORIZON - 16mm** (fitted in step 5) from the auxiliary tank to the **T-PIECE - 12mm**.
- Connect the **HOSE – FUEL EMISSION - 8mm** (fitted in step 5) from the auxiliary tank to the **FUEL FILTER - INLINE - 8mm** then run the hose to the **FUEL PUMP – POSI-FLO**, continue the hose to the **Y-PIECE - 16mm x 16mm x 8mm**.
- Fuel system should run-



23. Using the **HOSE – FILLER – 44mm** connect the supplied **FILLER TUBE** to the Auxiliary tank behind the cab.

- Connect the 700mm length of **HOSE – HORIZON - 16mm** from the FILLER TUBE to the **BRASS FITTING - ELBOW - 5/8" x 1/4" BSP 9** (fitted in step 4).



Brown Davis Automotive Pty. Ltd.

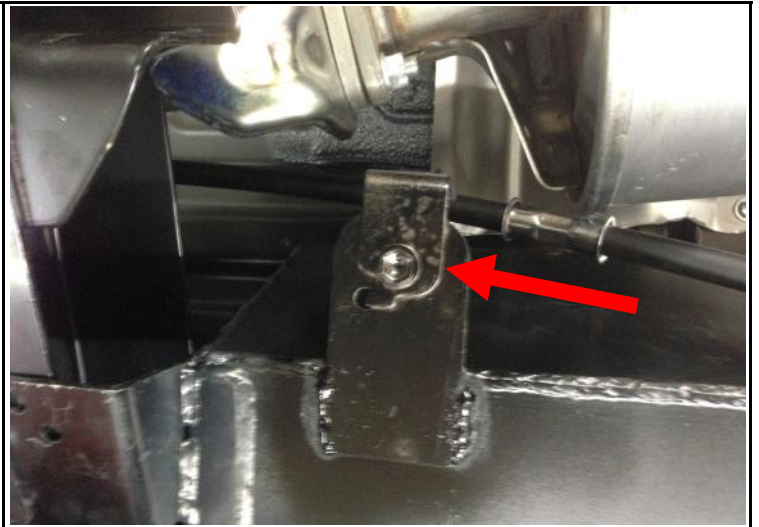
47 Holloway Drive, Bayswater, Victoria, Australia 3153

Ph: +61 (3) 9762 8722 | Fax: +61 (3) 9762 9829 | Email: info@browndavis.com.au | Web: www.browndavis.com.au

Brown Davis Automotive Pty. Ltd.  
ABN: 72 657 573 544

Copyright Brown Davis Automotive Pty. Ltd. This document contains technical information the property of Brown Davis Automotive Pty. Ltd.

24. Fit the hand brake cable bracket to the bracket on the front of the rear tank wing.



25. Use the P shaped brackets on the wings of the tanks to support the hand brake cable.



Brown Davis Automotive Pty. Ltd.  
ABN: 72 657 573 544

Copyright Brown Davis Automotive Pty. Ltd. This document contains technical information the property of Brown Davis Automotive Pty. Ltd.

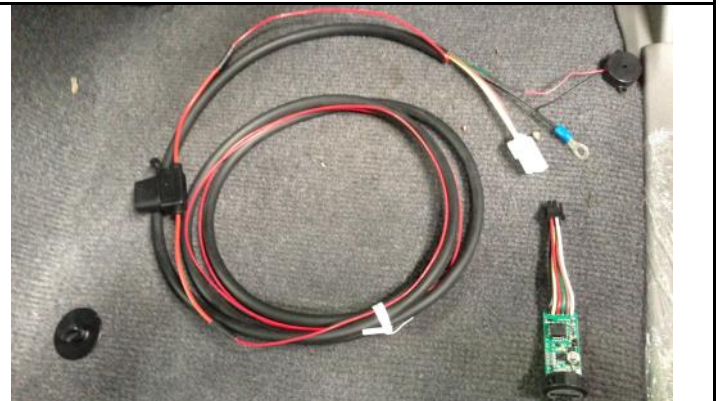
26. Locate somewhere on the dash to mount the **FUEL GUAGE/SWITCH – CP 309GS LED DASH UNIT**.

- Drill a 20mm (approx.) to install.



27. Locate 12 volt ignition wire

28. Connect the single red wire from the **BUZZER – PEEL – CP 5** to the 12 volt ignition wire using the supplied **SCOTCH LOCK** or by soldering.



29. Stick the **BUZZER – PEEL – CP 5** behind the driver side kick panel or dash.

- Earth the ring (circled in photo) by fastening it to a metal surface.



Brown Davis Automotive Pty. Ltd.

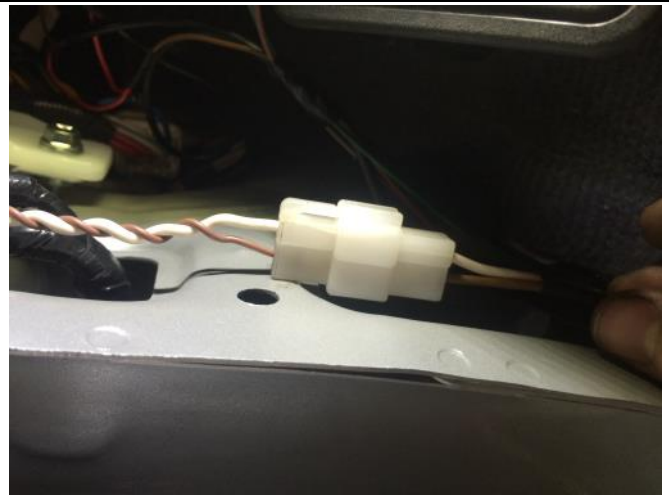
ABN: 72 657 573 544

Copyright Brown Davis Automotive Pty. Ltd. This document contains technical information the property of Brown Davis Automotive Pty. Ltd.

30. Connect the plugs from the **FUEL GUAGE/SWITCH – CP 309GS LED DASH UNIT** to the **BUZZER – PEEL – CP 5**.



31. Connect the white plugs from both the **BUZZER – PEEL – CP 5** and the **WIRE – TWIN CORE – 3.0mm – BROWN/WHITE – WITH PLUG**.

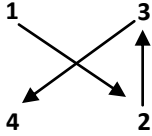


Brown Davis Automotive Pty. Ltd.  
ABN: 72 657 573 544

Copyright Brown Davis Automotive Pty. Ltd. This document contains technical information the property of Brown Davis Automotive Pty. Ltd.

32. Re-fit the tail-shaft.

- To make sure tail shaft is refitted correctly, tension bolts as follows.



33. Double check all fuel line clamps and make sure fuel lines are secure and not rubbing on tank or body of the vehicle. Road test and check for rattles & squeaks.

