

Brown Davis Automotive Pty. Ltd.  
ABN: 72 657 573 544

Copyright Brown Davis Automotive Pty. Ltd. This document contains technical information the property of Brown Davis Automotive Pty. Ltd.

#### MITSUBISHI PAJERO – 60lt AUXILIARY TANK AUXILIARY FUEL TANK PARTS LIST AND FITTING INSTRUCTIONS PART NUMBER: MPSA7

Item #	Description	Quantity	Part No.	P	C
1	TANK—REPLACEMENT	1	MPSA7	-	-
2	DRAIN PLUG—MAGNETIC—M14 (FITTED TO THE TANK)	1		-	-
3	HOSE – TMP – 6mm	1.2m			
4	HOSE – FUEL AND EMISSION - 8mm	1.4m			
5	HOSE – TMP – 16mm	2.2m			
6	HOSE – FILLER – 35mm	100mm			
7	HOSE – FILLER – 48mm	80mm (3)			
8	HOSE CLAMP – STAINLESS – 8-16mm	6			
9	HOSE CLAMP – STAINLESS – 16-25mm	4			
10	HOSE CLAMP – STAINLESS – 32-50mm	2			
11	HOSE CLAMP – STAINLESS – 40-60mm	6			
12	FUEL PICK UP – 5/16" x 1/4" BSP ELBOW	1			
13	BRASS FITTING-TAIL BARB- 5/8" x 1/4" BSP	1			
14	BRASS FITTING-TAIL BARB– 5/16" x 1/8" BSP	1			
15	BRASS FITTING-ELBOW– 5/16" x 1/8" BSP	1			
16	FUEL GUAGE/SWITCH – CP 309GS LED DASH UNIT	1			
17	RELAY/BUZZER – PEEL – CP 5	1			
18	WIRE – TWIN CORE – 3.0mm – BROWN/WHITE—WITH PLUG	3.5m			
19	CRIMP FITTING – SPADE FEMALE 6mm - INSULATED - RED	1			
20	CRIMP FITTING – SPADE FEMALE 4mm - RED	1			
21	CRIMP FITTING - RING 5MM - RED	1			
22	CRIMP FITTING – JOINER 3mm - RED	1			
23	SCOTCH LOCK	1			
24	SENDER UNIT - VDO 220-004—FITTED TO TANK	1			
25	FUEL PUMP – POSI-FLO	1			
26	FUEL FILTER – INLINE 90° – 8mm	1			
27	CABLE TIE - 8" BLACK	6			
28	SCREW - SELF TAPPER	4			
29	SET SCREW – PAN HEAD – M4 x 10mm – PLATED 8.8	5			
30	WASHER – SPRING PLATED – M4	5			

**KIT CONTINUES ON NEXT PAGE**



# LONG RANGE FUEL TANKS

## MPSA7

Brown Davis Automotive Pty. Ltd.  
ABN: 72 657 573 544

Copyright Brown Davis Automotive Pty. Ltd. This document contains technical information the property of Brown Davis Automotive Pty. Ltd.

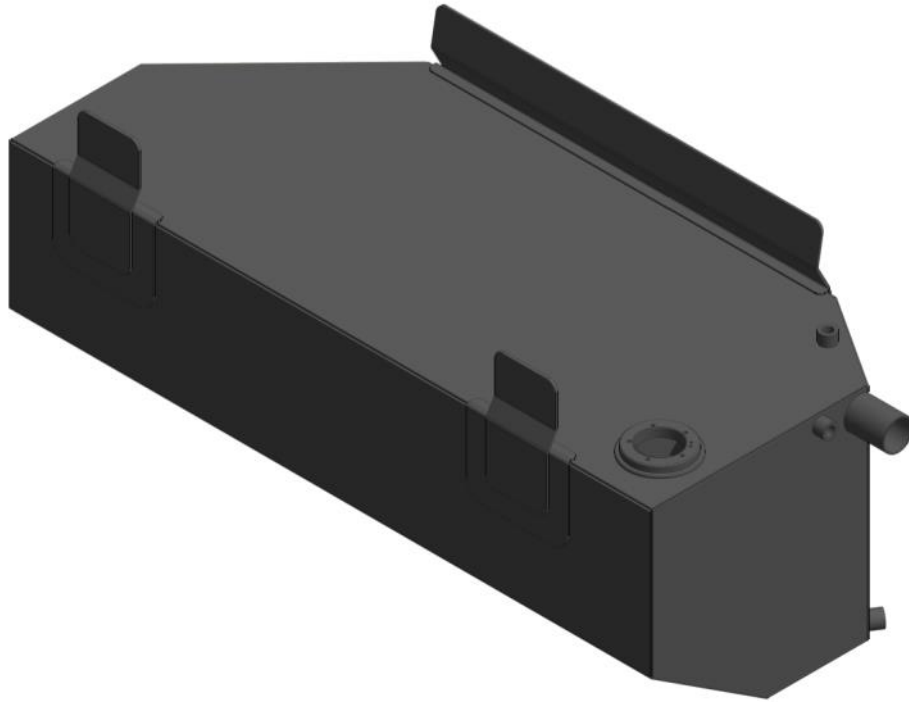
Item #	Description	Quantity	Part No.	P	C
31	SET SCREW – HEX – M8 x 25mm – PLATED 8.8—ON WIRE	2			
32	WASHER – FLAT PLATED – M8	2			
33	WASHER – SHAKE PROOF PLATED – M8	2			
34	NUT- PLATED – M8	2			
35	SET SCREW – HEX – M10 x 30mm – PLATED 8.8	5			
36	SET SCREW – HEX – M10 x 35mm – PLATED 8.8	2			
37	WASHER – FLAT PLATED – M10	6			
38	WASHER – PANEL PLATED – M10	4			
39	WASHER – SHAKE PROOF PLATED – M10	4			
40	NUT- PLATED – M10	11			
41	BACK UP PLATE - 40x50mm—CENTRAL HOLE	1	BP-CH-10-040050		
42	Y-FILLER	1	YF-MPLA7		
43	FILLER TUBE	1	FT-MPSA7		
44	FILLER TUBE— <i>WITH REDUCER</i>	1	FT-MPLA7-B		
45	WARRANTY CARD & INFORMATION	1			
46	BROWN DAVIS AUTOMOTIVE STICKER	1			

	STAFF MEMBERS INITIALS	DATE
KIT PACKED BY		
KIT CHECKED BY		

Brown Davis Automotive Pty. Ltd.  
ABN: 72 657 573 544

Copyright Brown Davis Automotive Pty. Ltd. This document contains technical information the property of Brown Davis Automotive Pty. Ltd.

### PART NUMBER: MPSA7 AUXILIARY FUEL TANK PARTS LIST AND FITTING INSTRUCTIONS



**WARNING:**

**THIS FUEL TANK IS HEAVY. DO NOT ATTEMPT TO LIFT THIS FUEL TANK WITHOUT APPROPRIATE ASSISTANCE OR SERIOUS INJURY MAY RESULT**



**WARNING:**

**ENSURE A FIRE EXTINGUISHER IS AVAILABLE WHILST WORKING NEAR EXPOSED FUEL**



**-TO FIT THIS TANK MODIFICATIONS TO THE EXHAUST SYSTEM MUST BE MADE**

**-CHECK CONTENTS OF KIT BEFORE COMMENCING FITMENT**

**-DRAIN VEHICLE FUEL TANK TO LOWEST LEVEL POSSIBLE BEFORE COMMENCING FITMENT**

**-BEFORE INSTALLATION THE BROWN DAVIS LONG RANGE TANK SHOULD BE WASHED OUT WITH THE SAME FUEL TYPE AS THE VEHICLE IT'S BEING FITTED TO**

**Any questions or information required in relation to the below instructions please do not hesitate to contact Brown Davis head office or one of our distributors.**

**Phone: +61 (3) 9762 8722  
Email: [info@browndavis.com.au](mailto:info@browndavis.com.au)**

Brown Davis Automotive Pty. Ltd.

47 Holloway Drive, Bayswater, Victoria, Australia 3153

Ph: +61 (3) 9762 8722 | Fax: +61 (3) 9762 9829 | Email: [info@browndavis.com.au](mailto:info@browndavis.com.au) | Web: [www.browndavis.com.au](http://www.browndavis.com.au)

Brown Davis Automotive Pty. Ltd.  
ABN: 72 657 573 544

Copyright Brown Davis Automotive Pty. Ltd. This document contains technical information the property of Brown Davis Automotive Pty. Ltd.

#### SETUP FOR AUXILIARY TANK

1. Remove plastic trim from inside the rear right hand wheel arch
  - The rear wheel could be removed to allow easier fitment access.



2. Remove plastic lining from inside the spare wheel well.



3. Remove the rear muffler.
  - A new rear exhaust needs to be fitted to vehicle, this should be done by a professional.

Brown Davis Automotive Pty. Ltd.  
ABN: 72 657 573 544

Copyright Brown Davis Automotive Pty. Ltd. This document contains technical information the property of Brown Davis Automotive Pty. Ltd.

#### SETUP OF AUXILIARY TANK

4. Install brass fittings with thread sealant, teflon tape or the likes.

⇒ **FUEL PICK UP – 5/16" x 1/4" BSP ELBOW** Circled in blue

⇒ **BRASS FITTING - TAIL BARB - 5/8" x 1/4" BSP** Circled in red



5. Using thread sealant install the 2 **BRASS FITTING-TAIL BARB – 5/16" x 1/8" BSP** to the **FUEL PUMP – POSI-FLO**.



6. Fit the FUEL PUMP - POSI-FLO to the stud welded to the tank.

- Insure the black wire is connected to the tank to earth the pump.



Brown Davis Automotive Pty. Ltd.

ABN: 72 657 573 544

Copyright Brown Davis Automotive Pty. Ltd. This document contains technical information the property of Brown Davis Automotive Pty. Ltd.

7. Using the **HOSE – FUEL AND EMISSION - 8mm** and hose clamps connect the **FUEL FILTER – INLINE – ELBOW – 8mm** and the **FUEL PUMP – POSI-FLO** \*as shown in photo\*.
- Then connect the hose off the filter to the **FUEL PICK UP – 5/16" x 1/4" BSP ELBOW** (fitted in step 4).
- Connect remaining **HOSE – FUEL AND EMISSION - 8mm** to the other side of the pump.



Brown Davis Automotive Pty. Ltd.  
ABN: 72 657 573 544

Copyright Brown Davis Automotive Pty. Ltd. This document contains technical information the property of Brown Davis Automotive Pty. Ltd.

#### WIRING

8. Locate somewhere on the dash to mount the **FUEL GAUGE/SWITCH – CP 309GS LED DASH UNIT**. *\*photo is for reference only\**
- Drill a 20mm (approx.) to install.

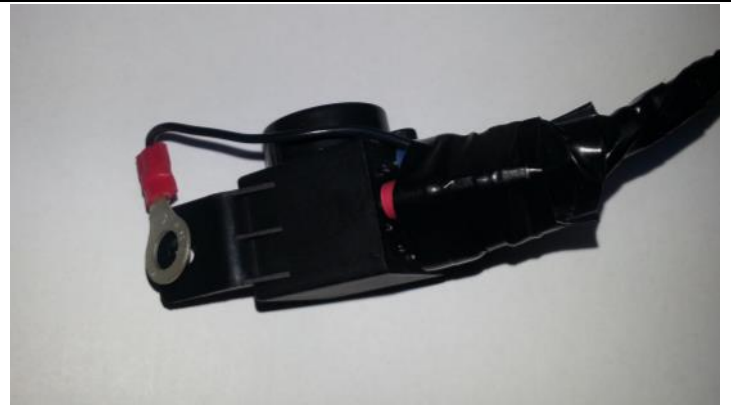


9. Locate 12 volt ignition wire

10. Connect the single red wire from the **RELAY/BUZZER – PEEL – CP 5** to the 12 volt ignition wire using the supplied SCOTCH LOCK or by soldering.



11. Mount the **RELAY/BUZZER – PEEL – CP 5** to a metal surface behind the driver side kick panel or dash.
- NOTE: Most vehicles will have a metal tag with a bolt that can be used (shown in photo) but in some cases the unit will need to be installed with the **SCREW - SELF TAPPER** supplied.
  - The eyelet must be touching a metal surface to earth the setup.



Brown Davis Automotive Pty. Ltd.  
ABN: 72 657 573 544

Copyright Brown Davis Automotive Pty. Ltd. This document contains technical information the property of Brown Davis Automotive Pty. Ltd.

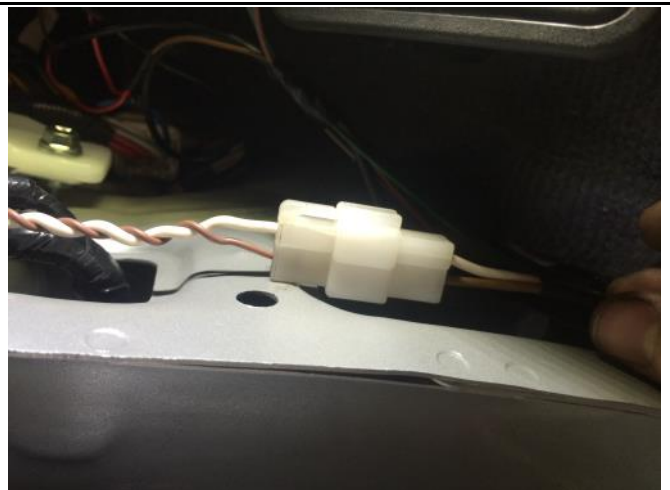
12. Connect the plugs from the **FUEL GUAGE/SWITCH – CP 309GS LED DASH UNIT** to the **RELAY/BUZZER – PEEL – CP 5**.



13. Run the **WIRE – TWIN CORE – 3.0mm – BROWN/WHITE—WITH PLUG** from the dash to the tank location, ensuring the wire is safe. Feed the wire through an existing loom or grommet.

- The end with the plug should be in the vehicles cab at the dash.
- Brown Davis recommends to follow existing wiring where possible or other wise, follow fuel lines or air conditioning lines.

14. Connect the white plugs from both the **RELAY/BUZZER – PEEL – CP 5** and the **WIRE – TWIN CORE – 3.0mm – BROWN/WHITE—WITH PLUG**.



15. Connect the **CRIMP FITTING – JOINER 3mm - RED** to the red wire on the **FUEL PUMP – POSI-FLO**.

- Join the white wire to the opposite end of the **CRIMP FITTING – JOINER 3mm - RED**.
- NOTE: The white wire should be trimmed first to avoid excess wire. Keep off cut wire for later step.



Brown Davis Automotive Pty. Ltd.  
ABN: 72 657 573 544

Copyright Brown Davis Automotive Pty. Ltd. This document contains technical information the property of Brown Davis Automotive Pty. Ltd.

16. Attach the **CRIMP FITTING – SPADE FEMALE 6mm - INSULATED - RED** to the brown wire so it can be plugged to the center plug on the **SENDER UNIT - VDO 220-004** (circled in photo) that is fitted to the tank, once tank is fitted.

- NOTE: The brown wire should be trimmed first to avoid excess wire.



17. The sender unit must also be earthed.

- Using the white off cut wire connect the **CRIMP FITTING - RING 5MM - RED** to one end and the **CRIMP FITTING – SPADE FEMALE 4mm - RED** to the other.
- Plug the **CRIMP FITTING – SPADE FEMALE 4mm - RED** to the **SENDER UNIT - VDO 220-004** (circled in photo).
- Connect the **CRIMP FITTING - RING 5MM - RED** to the chassis.



Brown Davis Automotive Pty. Ltd.  
ABN: 72 657 573 544

Copyright Brown Davis Automotive Pty. Ltd. This document contains technical information the property of Brown Davis Automotive Pty. Ltd.

#### INSTALLATION OF AUXILIARY TANK

18. Using a lifting device, jack the tank into place.
- Plug the wiring to the sender unit as mentioned in step 16 and 17 as the tank is going into place.
  - NOTE: tank position can vary from left to right, if the tank is too close to the right it can cause the new filler tube to protrude towards the right rear tyre. Check tank location before drilling any holes.

19. With the tank in position drill 2 holes through the front tank bracket through to the wheel well.
- Fasten using the supplied M10 bolts and washers. In-sure the supplied back up plates in place are used inside the wheel well.



20. Drill another 2 holes through the rear brackets of the tank into the wheel well.
- Fasten using the supplied M10 bolts and washers



Brown Davis Automotive Pty. Ltd.

47 Holloway Drive, Bayswater, Victoria, Australia 3153

Ph: +61 (3) 9762 8722 | Fax: +61 (3) 9762 9829 | Email: [info@browndavis.com.au](mailto:info@browndavis.com.au) | Web: [www.browndavis.com.au](http://www.browndavis.com.au)

Brown Davis Automotive Pty. Ltd.

ABN: 72 657 573 544

Copyright Brown Davis Automotive Pty. Ltd. This document contains technical information the property of Brown Davis Automotive Pty. Ltd.

#### INSTALLATION OF TWIN FILLER

21. Remove standard filler assembly from rear right hand side wheel arch.
  - Ensure that fuel level is low enough that fuel will not leak from filler hose.



Brown Davis Automotive Pty. Ltd.

ABN: 72 657 573 544

Copyright Brown Davis Automotive Pty. Ltd. This document contains technical information the property of Brown Davis Automotive Pty. Ltd.

22. Cut the filler tube down using photos as a guide.

- De-bur the cut tube end.



Brown Davis Automotive Pty. Ltd.  
ABN: 72 657 573 544

Copyright Brown Davis Automotive Pty. Ltd. This document contains technical information the property of Brown Davis Automotive Pty. Ltd.

23. Refit the cut filler to vehicle.

- Using supplied **HOSE – FILLER – 35mm**, **HOSE – FILLER – 48mm** and hose clamps connect the **FILLER TUBE— WITH REDUCER** to the modified standard filler pipe.
- Fit the **TWIN FILLER** supplied using the standard bolts with the supplied washers so it lines up with the **FILLER TUBE— WITH REDUCER**



Brown Davis Automotive Pty. Ltd.  
ABN: 72 657 573 544

Copyright Brown Davis Automotive Pty. Ltd. This document contains technical information the property of Brown Davis Automotive Pty. Ltd.

24. Using the **HOSE – TMP – 16mm** and hose clamps connect both the standard tank fast fill breather and the auxiliary tank fast fill breather (**BRASS FITTING-ELBOW - 5/8" x 1/4" BSP** fitted in step 4).



25. Connect the **HOSE – FUEL AND EMISSION - 8mm** that is connected to the pump to the smallest pipe on the **TWIN FILLER**.



26. Using the remaining **HOSE – FILLER – 48mm** and hose clamps connect the **FILLER TUBE** between the **TWIN FILLER** and the auxiliary tank



Brown Davis Automotive Pty. Ltd.  
ABN: 72 657 573 544

Copyright Brown Davis Automotive Pty. Ltd. This document contains technical information the property of Brown Davis Automotive Pty. Ltd.

27. Remove valve from the standard filler assembly and connect to supplied **HOSE – TMP – 6mm**.
- Connect hose with hose clamps to the remaining pipe of the standard fuel system (circled in photo).
  - Run the valve to the highest point possible on the TWIN FILLER and attach with cable tie.



Brown Davis Automotive Pty. Ltd.

ABN: 72 657 573 544

Copyright Brown Davis Automotive Pty. Ltd. This document contains technical information the property of Brown Davis Automotive Pty. Ltd.

- 28. Put vehicle back together.
- 29. Double check all fuel line clamps and security of fuel lines. Road test and check for rattlers & squeaks.

