



# LONG RANGE FUEL TANKS

## MBS07R1

Brown Davis Automotive Pty. Ltd.  
ABN: 72 657 573 544

Copyright Brown Davis Automotive Pty. Ltd. This document contains technical information the property of Brown Davis Automotive Pty. Ltd.

### MERCEDES-BENZ SPRINTER 2007-PRESENT - SWB & MWB - DIESEL- 2WD – 180lt REPLACEMENT TANK LONG RANGE FUEL TANK PARTS LIST AND FITTING INSTRUCTIONS PART NUMBER: MBS07R1


Item #	Description	Quantity	Part No.	P	C
1	TANK—REPLACEMENT	1	MBS07R1	-	-
2	DRAIN PLUG—MAGNETIC—M14 (FITTED TO THE TANK)	1	DP-M14	-	-
3	HOSE – TMP - 6mm	800mm			
4	HOSE – TMP - 16mm	2.4m			
5	HOSE – FILLER - 44mm	175mm			
6	HOSE – FILLER – 57mm	100mm			
7	HOSE CLAMP – STAINLESS - 16-25mm	6			
8	HOSE CLAMP – STAINLESS – 40-60mm	2			
9	HOSE CLAMP – STAINLESS – 50-70mm	2			
10	BRASS – ELBOW - 5/8" x 1/4" BSP	1			
11	BRASS – ELBOW - 5/8" x 3/8" BSP	2			
12	T PIECE - NYLON - 16mm	1			
13	FILLER REDUCER 44-57mm	1			
14	SET SCREW – PAN HEAD – M5 x 12mm – PLATED 8.8	6			
15	WASHER – SPRING - M5	6			
16	SET SCREW – HEX – M10 x 30mm – ON WIRE – PLATED 8.8	5			
17	NUT – STANDARD PLATED – M10	10			
18	WASHER – PANEL PLATED – M10	5			
19	WASHER – SHAKEPROOF INTERNAL PLATED – M10	5			
20	DISCRIMINATOR VALVE	1			
21	DISCRIMINATOR VALVE SEAL	1			
22	STAINLESS TUBE with 1/4" BSP TAP—5/8" OD x 100mm long	1			
23	RETAINING RING	1	RR-MBS07R1		
24	WARRANTY INFORMATION SHEET	1			
25	BROWN DAVIS AUTOMOTIVE STICKER	1			


	STAFF MEMBERS INITIALS	DATE
KIT PACKED BY		
KIT CHECKED BY		

Brown Davis Automotive Pty. Ltd.  
ABN: 72 657 573 544

Copyright Brown Davis Automotive Pty. Ltd. This document contains technical information the property of Brown Davis Automotive Pty. Ltd.

**MBS07R1 – 210lt REPLACEMENT TANK  
LONG RANGE FUEL TANK PARTS LIST AND FITTING INSTRUCTIONS  
PART NUMBER: MBS07R1**

<p><b>WARNING:</b></p> <p><b>THIS FUEL TANK IS HEAVY. DO NOT ATTEMPT TO LIFT THIS FUEL TANK WITHOUT APPROPRIATE ASSISTANCE OR SERIOUS INJURY MAY RESULT</b></p>	
-----------------------------------------------------------------------------------------------------------------------------------------------------------------	-------------------------------------------------------------------------------------

<p><b>WARNING:</b></p> <p><b>ENSURE A FIRE EXTINGUISHER IS AVAILABLE WHILST WORKING NEAR EXPOSED FUEL</b></p>	
---------------------------------------------------------------------------------------------------------------	-------------------------------------------------------------------------------------

**-CHECK CONTENTS OF KIT BEFORE COMMENCING FITMENT**

**-DRAIN VEHICLE FUEL TANK TO LOWEST LEVEL POSSIBLE BEFORE COMMENCING FITMENT**

**-BEFORE INSTALLATION THE BROWN DAVIS LONG RANGE TANK SHOULD BE WASHED OUT WITH THE SAME FUEL TYPE AS THE VEHICLE IT'S BEING FITTED TO**

**Any questions or information required in relation to the below instructions please do not hesitate to contact Brown Davis head office or one of our distributors.**

**Phone: +61 (3) 9762 8722  
Email: [info@browndavis.com.au](mailto:info@browndavis.com.au)**

Brown Davis Automotive Pty. Ltd.

ABN: 72 657 573 544

Copyright Brown Davis Automotive Pty. Ltd. This document contains technical information the property of Brown Davis Automotive Pty. Ltd.

#### REMOVAL STANDARD OF STANDARD TANK

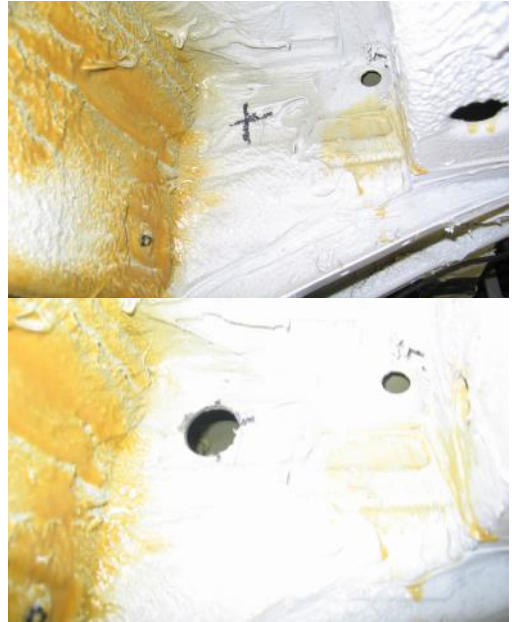
1.	Place Mercedes 518 on hoist. To remove the standard plastic fuel tank open the filler door and remove the black plastic cover over the filler.	
2.	Remove the bolt holding the filler neck to the body.	
3.	Remove the gauge wiring from the sender unit.	
4.	Remove fuel lines from the sender unit.	
*	<b>Note: Do not cut fuel lines or wiring harness. They will be reconnected to the new tank.</b>	
5.	Support the fuel tank and then undo support straps from the body.	
6.	Remove the tank from the vehicle.	
7.	Remove the front stone guard.	

Brown Davis Automotive Pty. Ltd.  
ABN: 72 657 573 544

Copyright Brown Davis Automotive Pty. Ltd. This document contains technical information the property of Brown Davis Automotive Pty. Ltd.

#### SETUP FOR REPLACEMENT TANK

8. Holesaw a 1" hole in the body for fast fill breather to fit through.



9. Cut the filler neck from the standard tank.



10. Drill 12mm hole in the top of the filler and fit the 5/8" x 1/4" fast fill breather and seal with araldite.



Brown Davis Automotive Pty. Ltd.

47 Holloway Drive, Bayswater, Victoria, Australia 3153

Ph: +61 (3) 9762 8722 | Fax: +61 (3) 9762 9829 | Email: [info@browndavis.com.au](mailto:info@browndavis.com.au) | Web: [www.browndavis.com.au](http://www.browndavis.com.au)

Brown Davis Automotive Pty. Ltd.  
ABN: 72 657 573 544

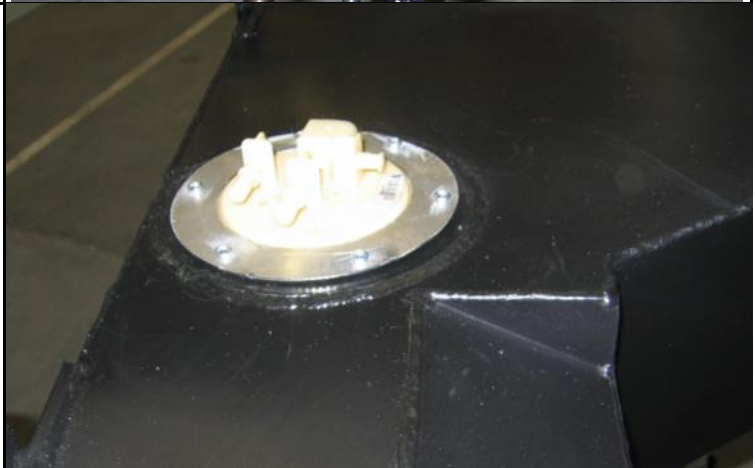
Copyright Brown Davis Automotive Pty. Ltd. This document contains technical information the property of Brown Davis Automotive Pty. Ltd.

11. Replace the filler back in the van with fast fill hose running through the 1" hole.

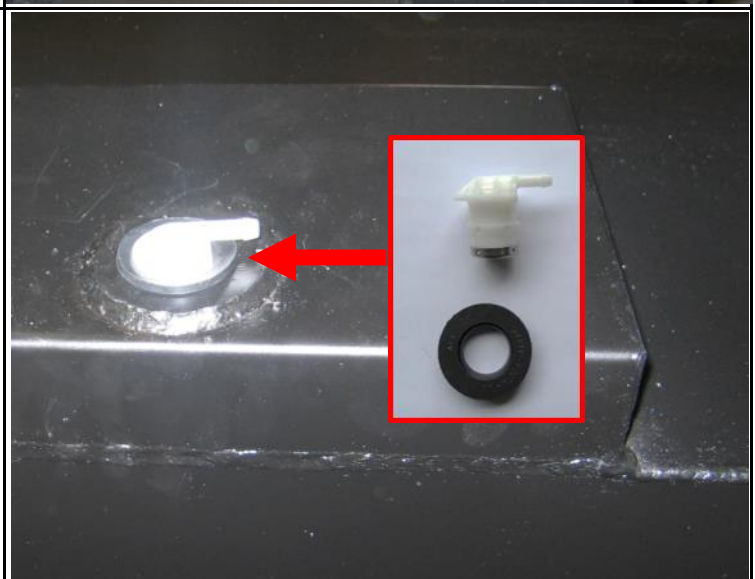
12. Remove locating lug from ceiling surface of sender unit.



13. Fit sender unit to the tank.



14. Fit discriminator valve.



Brown Davis Automotive Pty. Ltd.  
ABN: 72 657 573 544

Copyright Brown Davis Automotive Pty. Ltd. This document contains technical information the property of Brown Davis Automotive Pty. Ltd.

15. Fit the 2 BRASS – ELBOW - 5/8" x 3/8" BSP to the sockets on the tank.



16. Run the 16mm hose across the length of tank.
- Cut the hose and connect the T-piece supplied where the side bracket of the tank is, using hose clamps. (see photos)
  - Fasten the hose to the brass fittings in the tank with hose clamps, trimming the hose to suit.



17. Feed the **STAINLESS TUBE with 1/4" BSP TAP—5/8" OD x 100mm long** provided through the existing hole in the chassis rail.



Brown Davis Automotive Pty. Ltd.  
ABN: 72 657 573 544

Copyright Brown Davis Automotive Pty. Ltd. This document contains technical information the property of Brown Davis Automotive Pty. Ltd.

18. Connect the remaining 16mm hose to the brass fitting in the **STAINLESS TUBE with 1/4" BSP TAP—5/8" OD x 100mm long** and run it up to the fast fill breather on the filler assembly.



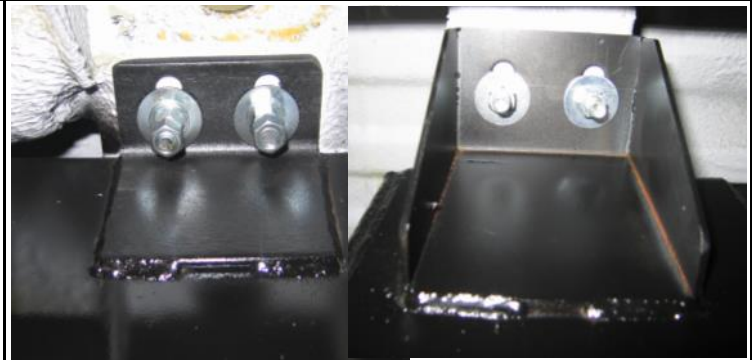
19. Lift tank into position.
- Use 16mm hose to join the T-piece to the brass fitting on the **STAINLESS TUBE with 1/4" BSP TAP—5/8" OD x 100mm long** before the tank is in its final position



20. Line the brackets up with the 3 original strap mount captive threads.
- 2 beside the tail shaft
  - 1 near the filler



21. Drill remaining holes in brackets and fit M10 set screws, nuts and washers.



Brown Davis Automotive Pty. Ltd.

ABN: 72 657 573 544

Copyright Brown Davis Automotive Pty. Ltd. This document contains technical information the property of Brown Davis Automotive Pty. Ltd.

22. Connect plastic filler to tank with rubber hose supplied.



23. Reconnect fuel lines and gauge senders.

24. Double check all fuel line clamps and security of fuel lines. Fill tank and check for leaks. Road test and check for rattlers & squeaks. Re-check for fuel leaks.