



Brown Davis Automotive Pty. Ltd.
ABN: 72 657 573 544

Copyright Brown Davis Automotive Pty. Ltd. This document contains confidential and
Technical information the property of Brown Davis Automotive Pty. Ltd.

LDER2

1

Last edited: 1/09/2010

Fuel Tank Part List and Installation Instructions

TANK P/N: **LDER2**

LAND ROVER DEFENDER 130 – DIESEL
130ltr REPLACEMENT TANK

Item	Description	Quantity	Part number	P	C
1	TANK – REPLACEMENT	1	LDER2		
2	HOSE – FUEL INJECTION – 8mm	0.4m			
3	HOSE – FUEL INJECTION – 8mm	1.2m			
4	HOSE CLAMP – STAINLESS - 8-16mm	4			
5	HOSE CLAMP – STAINLESS - 60-80mm	2			
6	BRASS – ELBOW - 5/16" x 1/4" BSP	1			
7	BRASS – TAIL BARB - 1/2" x 1/4" BSP	1			
8	DRAIN PLUG – MAGNETIC – M14 (fitted to tank)	1	DP-M14		
9	CRIMP FITTING – JOINER 1/4" – RED	4			
10	WIRE – TWIN CORE – 3.0mm – RED/BLACK	1.2m			
11	SET SCREW – HEX – M10 x 30mm – PLATED 8.8	10			
12	NUT – STANDARD PLATED – M10	12			
13	WASHER – SHAKEPROOF INTERNAL PLATED – M10	10			
14	WASHER – PANEL PLATED – M10	10			
15	O-RING – 2 1/8 x 2 1/2 x 3 (BS7330)	1			
16	TANK BRACKET - STEEL STABILISER BAR SPACER BLOCK	1	TB-LDER1-a		
17	TANK BRACKET - STEEL STABILISER BAR SPACER BLOCK	1	TB-LDER1-b		
18	WIRE - 1.6mm THICK – to extend fuel gauge float arm	110mm			
19	STEEL TUBE EXTENSION – 70mm	125mm			
20	WARRANTY CARD & INFORMATION SHEET	1			
21	BROWN DAVIS AUTOMOTIVE STICKER	1			

Packed by (P): _____

Checked by (C): _____

Date Packed: ____ / ____ / ____

PH: +61 (3) 9762 8722 FAX: +61 (3) 9762 9829
47 Holloway Drive, Bayswater, Victoria, Australia 3153

info@browndavis.com.au www.browndavis.com.au



Brown Davis Automotive Pty. Ltd.

ABN: 72 657 573 544

Copyright Brown Davis Automotive Pty. Ltd. This document contains confidential and Technical information the property of Brown Davis Automotive Pty. Ltd.

LDER2

2

All Brown Davis Automotive fuel tank kits are manufactured to Australian Standards and the Australian Design Rules where applicable and carry a full **3 Year Warranty**. Construction in 2.0 mm cold rolled, aluminium coated steel ensures maximum strength and durability and minimum corrosion susceptibility. More than 30 years of testing within the field has shown that this gauge of steel is sufficiently impact resistant that an additional tank guard is not necessary (most standard tank guards are thinner than 1.5 mm).

All tanks are M.I.G. (Metal Inert Gas) welded to ensure the strongest possible seams and are baffled to prevent fuel surge. They are then pressure tested using two different techniques to eliminate the possibility of leaks. Drain plugs are fitted horizontally to prevent them being damaged if the tank is scraped over rocks and are magnetic to collect any metallic dirt that may enter your fuel system.

In all cases, Brown Davis Automotive fuel tanks are designed with general off road use in mind and are designed not to compromise ground clearance, entry, exit or ramp over angles.

Please remember it is the driver's responsibility to operate their vehicle in a sensible manner in 4WD conditions, Brown Davis Automotive cannot be held responsible for the abuse of your vehicle and subsequent possible fuel tank damage.

REPLACEMENT TANKS This tank is a replacement for the standard tank and fits in the same location. The standard filler is retained as is the fuel gauge sender unit which still works in the same manner except it takes longer to reach empty. Rearrangement of the exhaust system **IS NOT** necessary with this fitment.

ANY QUESTIONS OR INFORMATION REQUIRED IN RELATION THE BELOW INSTRUCTIONS PLEASE DO NOT HESITATE TO CONTACT BROWN DAVIS HEAD OFFICE OR ONE OF OUR DISTRIBUTORS.

PLEASE ENSURE ALL CONNECTIONS AND MOUNTINGS ARE CHECKED A SECOND TIME AFTER FINISHING YOUR INSTALLATION TO CONFIRM THERE ARE NO LEAKS AND THAT ALL BOLTS ARE TIGHT. ALWAYS ROAD TEST THE VEHICLE AND MAKE SURE THERE IS COMPLETE SUSPENSION TRAVEL CLEARANCE.

BROWN DAVIS CAN TAKE NO RESPONSIBILITY FOR AFTER MARKET SUSPENSION SYSTEMS INTERACTING WITH THE TANK, IF FITTED.

PH: +61 (3) 9762 8722 FAX: +61 (3) 9762 9829
47 Holloway Drive, Bayswater, Victoria, Australia 3153

info@browndavis.com.au www.browndavis.com.au



Brown Davis Automotive Pty. Ltd.

ABN: 72 657 573 544

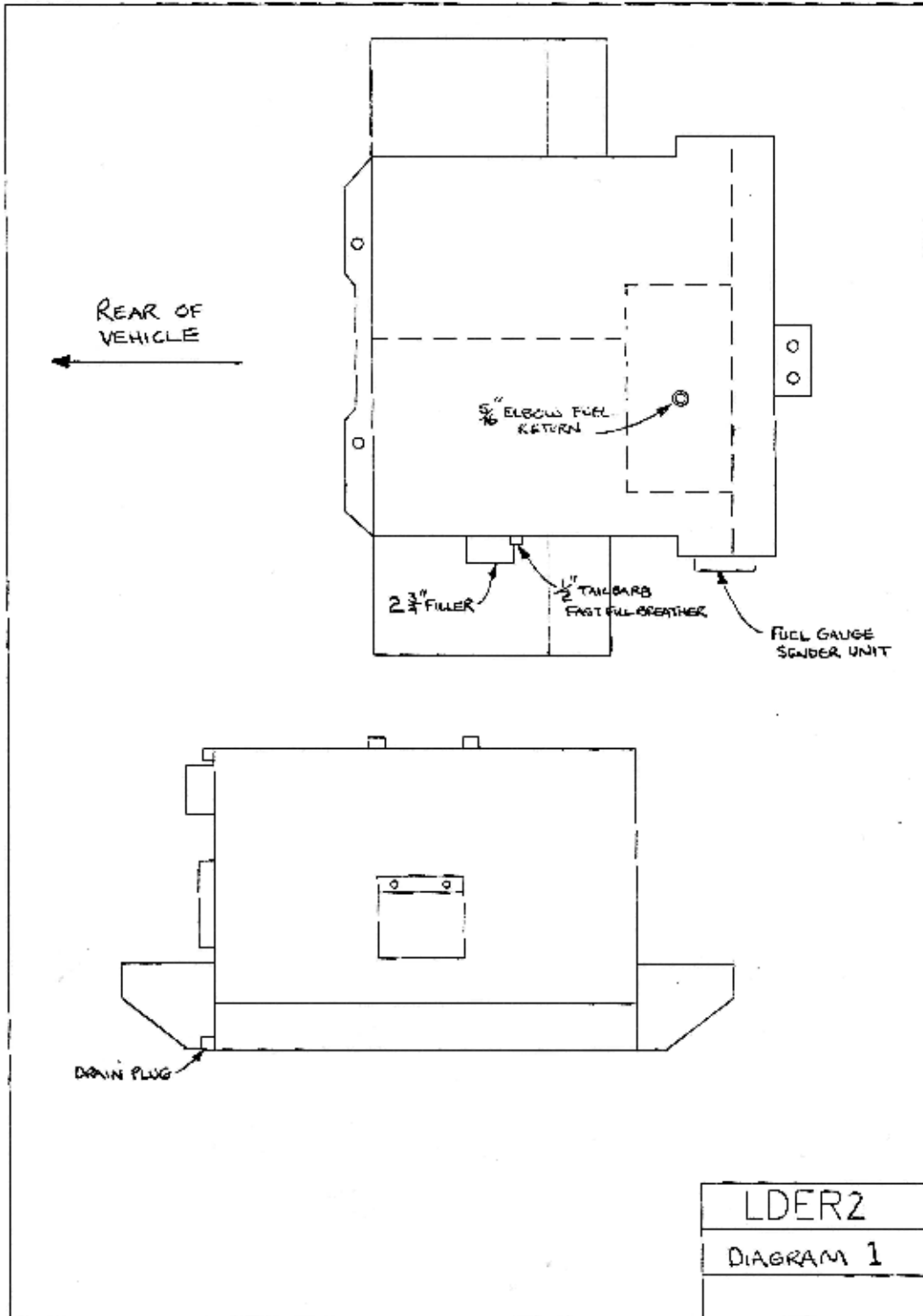
Copyright Brown Davis Automotive Pty. Ltd. This document contains confidential and Technical information the property of Brown Davis Automotive Pty. Ltd.

LDER2

3

FITTING

- 1 Disconnect the filler hose and the fast fill breather hose from the standard tank (at the tank end). Unplug the fuel gauge wiring and then disconnect (unscrew) the fuel pick up hose (at the tank end in the fuel gauge). Drain all the fuel from the standard tank.
- 2 Unbolt and remove the two rear towing eyes from off of the chassis at the rear of the standard tank. Unbolt the rear stabiliser bar mountings to the chassis each side and allow the bar to swing down forward towards the rear axel. Support the tank up under the rear of the car, unbolt and lower the tank down slightly to enable access to unscrew the return fuel hose fitting on the top of the standard tank (cut the end fitting off of this hose in readiness for reconnection later). Remove the standard tank. Remove the front mounting bolt assembly and their rubber mounts and discard them.
- 3 Confirm that the Brown Davis long range tank is perfectly clean inside before assembly and installation by rinsing out the inside thoroughly, as should always be done with any new component installed into the fuel system of any vehicle. Use 4 to 5 litres of petrol, diesel or methylated spirits for this rinsing process which should be drained and discarded afterwards to confirm absolute cleanliness. Remove the fuel gauge unit from the original tank by twisting / rotating the retaining ring (then discard this ring). Modify the fuel gauge float arm (lengthen it) (**Refer Diagram 2**). Refit the modified fuel gauge sender unit into the new long range tank using the nitrile "O" ring and steel screw ring supplied (this can be tightened using a pin punch and hammer). Install all brass fittings into the replacement long range fuel tank using teflon tape or the like on all threads. Don't forget the drain plug. (**Refer Diagram 1**).
- 4 Lift the tank into position. Secure the tank up into position reusing the original bolts at the rear and the new screws, nuts and washers supplied at the front. Connect all hoses to their original positions.
- 5 Fit the new steel stabiliser bar mounting blocks (extensions) to the original mounting position on each side of the chassis, and then refit the sway bar to these new mounts. (ONLY REQUIRED ON SOME LATE MODELS). Refit the 2 rear towing eyes back onto the chassis where they were removed from in step 2.
- 6 Confirm the drain plug has been sealed into the tank and fill with the fuel drained in step 3. Replace the fuel filter under the bonnet after the first 1000km or 2 to 3 tank fills of the new tank and double check mounting bolts. On some diesel vehicles it is necessary to bleed the fuel system after such a tank installation (refer manufacturers handbook).





Brown Davis Automotive Pty. Ltd.

ABN: 72 657 573 544

Copyright Brown Davis Automotive Pty. Ltd. This document contains confidential and Technical information the property of Brown Davis Automotive Pty. Ltd.

LDER2

5

OPERATION INFORMATION

The operation of your new Brown Davis Automotive long range fuel tank is little different from the original tank.

Simply fill the long range/auxiliary tank exactly as with a standard tank. (It just takes more fuel to fill, and a dual filler will be used for filling auxiliary tanks).

The fuel gauge on the vehicles dash will read as with the standard tank. It should read with the same degree of accuracy as it did with the standard tank other than staying on full for most of the new increase in capacity. For about 20% more than the standard tank held the gauge will now read in proportion from full down to empty. Auxiliary tanks come with a separate tank gauge to show separate fuel level to main tank.

The low fuel light will still function as normal with it coming "on" at about 20% more fuel volume left to go than it used to, to warn you of low fuel.

Remember your new long range tank(s) are carrying a lot more fuel than standard. Remain aware of how much fuel has been used during the initial period of the gauge remaining on full for future reference in estimating fuel usage and consumption.

Maintenance and service of your new Brown Davis Automotive long range fuel tank other than the recommended 1000km check and filter change should be in align with the normal vehicle Manufactures service schedule and guidelines. Remember the long range tank has a magnetic drain plug that the standard tank did not. With the fuel level low the drain plug can be removed and cleaned to remove any metal fragments introduced from the filler bowser scraping on the filler tube when filling or particles and rust flakes from jerry cans used on long trips. This facility is supplied to protect the in-tank fuel pumps fitted to most modern vehicle fuel tanks.

Finally make sure the warranty card is filled out completely and returned to Brown Davis Automotive and that the warranty information is read and understood. If there are any queries about this or any of the above information please contact us at Brown Davis at the attached address or phone and fax numbers for assistance.

PH: +61 (3) 9762 8722 FAX: +61 (3) 9762 9829
47 Holloway Drive, Bayswater, Victoria, Australia 3153

info@browndavis.com.au www.browndavis.com.au