



LONG RANGE FUEL TANKS
IVDR9

Brown Davis Automotive Pty. Ltd.
ABN: 72 657 573 544

Copyright Brown Davis Automotive Pty. Ltd. This document contains technical information the property of Brown Davis Automotive Pty. Ltd.

IVECO DAILY VAN 3300mm SWB - 2007 – 170t REPLACEMENT TANK
LONG RANGE FUEL TANK PARTS LIST AND FITTING INSTRUCTIONS
PART NUMBER: IVDR9

Item #	Description	Quantity	Part No.	P	C
1	TANK – REPLACEMENT	1	IVDR9	-	-
2	DRAIN PLUG- MAGNETIC – M14 (fitted to tank)	1	DP-M14	-	-
3	HOSE – HORIZON – 16mm	1.6m			
4	HOSE CLAMP – STAINLESS - 16-27mm	8			
5	HOSE CLAMP – STAINLESS - 20-32mm	1			
6	HOSE CLAMP – STAINLESS - 40-60mm	1			
7	BRASS – PLUG – 1/4"	1			
8	BRASS – T-PIECE 5/8" x 3/8" BSP	3			
9	BRASS – ELBOW - 5/8" x 3/8" BSP	2			
10	BRASS – MODIFIED ELBOW – 3/4" x 1/2" BSP	1			
11	FUEL PICK UP – 1/4" x 1/4" BSP TAILBARB *CUT 220mm FROM THREAD*	1			
12	SET SCREW – HEX - M10 x 30mm – PLATED 8.8	2			
13	SET SCREW – HEX - M10 x 40mm – PLATED 8.8	2			
14	NUT – STANDARD PLATED - M10	10			
15	WASHER – PANEL PLATED – M10	5			
16	WASHER – FLAT PLATED – M10	4			
17	WASHER – SHAKEPROOF INTERNAL PLATED – M10	5			
18	C-CLAMP EXHAUST – 3/8 THREAD - C17 3 1/8"	2			
19	7/8" HOSE BLOCK OFF PLUG – 50mm hose and clamp attached	1			
20	STEEL TUBE EXTENSION - HOSE JOINER - IVECO JOINER	50mm			
21	SPACER - 10mm - 40x40mm	2	SP-10-040040		
22	BROWN DAVIS AUTOMOTIVE STICKER	1			
23	OPPERATIONS AND WARRANTY BOOKLET	1			

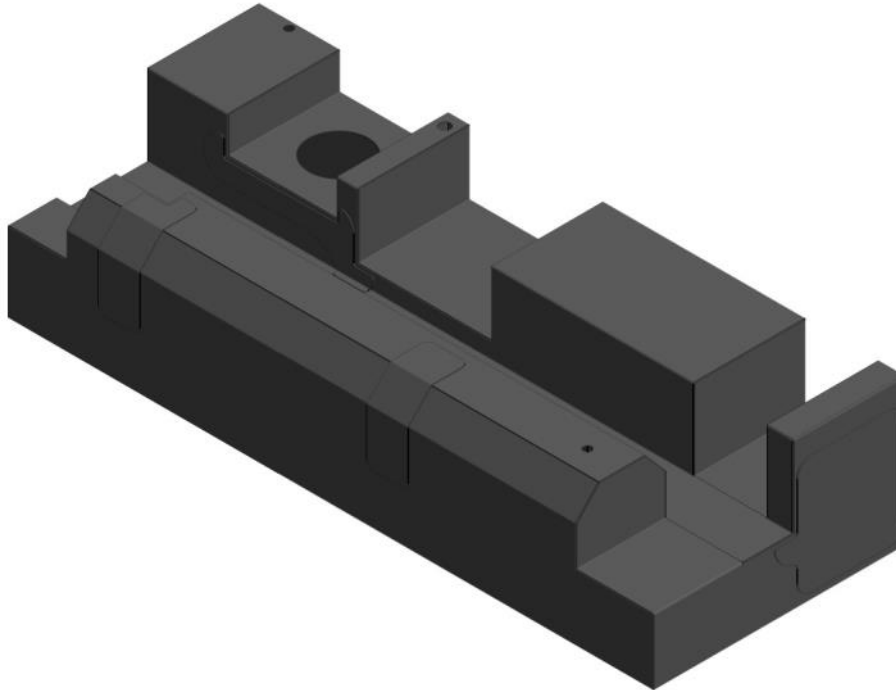
	STAFF MEMBERS INITIALS	DATE
KIT PACKED BY		
KIT CHECKED BY		

0
10
20
30
40
50
60
70
80
90
100
110
120
130
140
150
160
170
180
190
200
210
220
230
240
250
260
270

Brown Davis Automotive Pty. Ltd.
ABN: 72 657 573 544

Copyright Brown Davis Automotive Pty. Ltd. This document contains technical information the property of Brown Davis Automotive Pty. Ltd.

IVDR9 – 160lt REPLACEMENT TANK LONG RANGE FUEL TANK PARTS LIST AND FITTING INSTRUCTIONS PART NUMBER: IVDR9



WARNING:

THIS FUEL TANK IS HEAVY. DO NOT ATTEMPT TO LIFT THIS FUEL TANK WITHOUT APPROPRIATE ASSISTANCE OR SERIOUS INJURY MAY RESULT



WARNING:

ENSURE A FIRE EXTINGUISHER IS AVAILABLE WHILST WORKING NEAR EXPOSED FUEL



-CHECK CONTENTS OF KIT BEFORE COMMENCING FITMENT

-DRAIN VEHICLE FUEL TANK TO LOWEST LEVEL POSSIBLE BEFORE COMMENCING FITMENT

-BEFORE INSTALLATION THE BROWN DAVIS LONG RANGE TANK SHOULD BE WASHED OUT WITH THE SAME FUEL TYPE AS THE VEHICLE IT'S BEING FITTED TO

Any questions or information required in relation to the below instructions please do not hesitate to contact Brown Davis head office or one of our distributors.

Phone: +61 (3) 9762 8722

Email: info@browndavis.com.au

Brown Davis Automotive Pty. Ltd.

47 Holloway Drive, Bayswater, Victoria, Australia 3153

Ph: +61 (3) 9762 8722 | Fax: +61 (3) 9762 9829 | Email: info@browndavis.com.au | Web: www.browndavis.com.au

Brown Davis Automotive Pty. Ltd.
ABN: 72 657 573 544

Copyright Brown Davis Automotive Pty. Ltd. This document contains technical information the property of Brown Davis Automotive Pty. Ltd.

1. Using a lifting device, remove the standard fuel tank from the vehicle.



2. Remove the sender unit from the standard fuel tank.



3. Fit the sender unit to the new fuel tank.
 - Block of the 3/4" fitting on the flange of the sender unit.

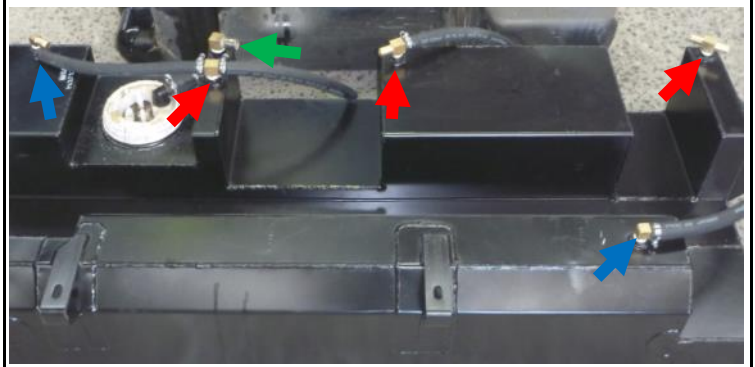


Brown Davis Automotive Pty. Ltd.
ABN: 72 657 573 544

Copyright Brown Davis Automotive Pty. Ltd. This document contains technical information the property of Brown Davis Automotive Pty. Ltd.

4. Using thread sealant, Teflon tape or the likes, fit all the brass fittings to the tank.

- **BRASS – T-PIECE 5/8" x 3/8" BSP—Red arrows.**
- **BRASS – ELBOW - 5/8" x 3/8" BSP—Blue arrows.**
- **BRASS – MODIFIED ELBOW – 3/4" x 1/2" BSP—Green arrow.**

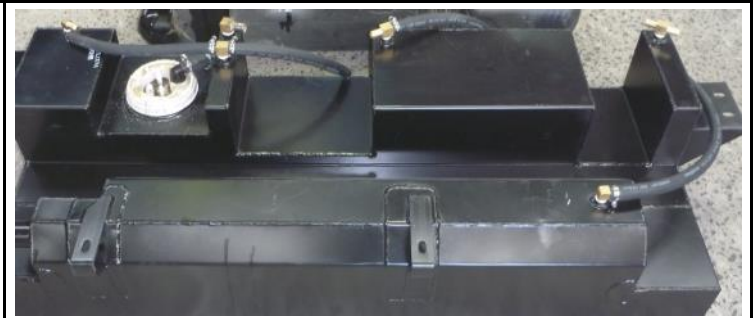


5. If the tank is to be fitted to a motor home and must also run a diesel heater, then fit the **FUEL PICK UP – 1/4" x 1/4" BSP ELBOW** to the 1/4" socket next to the sender unit, if not then fit the **BRASS – PLUG – 1/4"**.



6. Trim the supplied 16mm hose so it can be use to connect the three **BRASS – T-PIECE 5/8" x 3/8" BSP** and the two **BRASS – ELBOW - 5/8" x 3/8" BSP**.

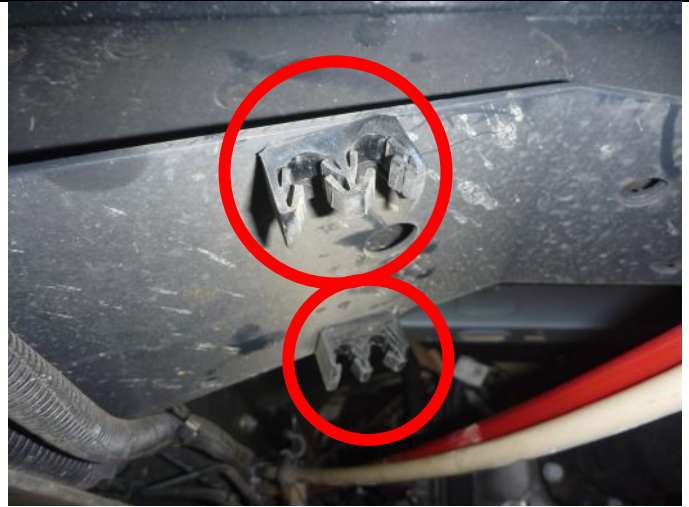
- The hose must be routed over the chassis so ensure only one side of the hose is joined to the brass fittings at this stage.



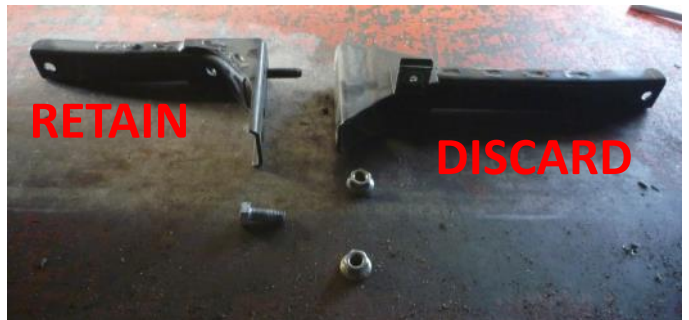
Brown Davis Automotive Pty. Ltd.
ABN: 72 657 573 544

Copyright Brown Davis Automotive Pty. Ltd. This document contains technical information the property of Brown Davis Automotive Pty. Ltd.

7. Remove the fuel line clips from the chassis.






8. Remove inner fuel tank mounts; retain and refit outer mounts.



Brown Davis Automotive Pty. Ltd.
ABN: 72 657 573 544

Copyright Brown Davis Automotive Pty. Ltd. This document contains technical information the property of Brown Davis Automotive Pty. Ltd.

<p>9. Using a lifting device, jack new tank into position.</p>	
<p>10. Mount U bolts over the round cross member and bolt to the rear of the tank.</p>	
<p>11. Fit M10 x 30mm set screws through the standard tank mounts and through the new tank mounts.</p>	
<p>12. Drill two or three 10mm holes through the lip of the front cross member using front mounting bracket as a guide; attach using M10 x 30mm set screws.</p>	
<p>13. Join convoluted fast fill breathers together and join to the 3/4" x 1/2" BSP elbow fitting on the tank.</p>	

Brown Davis Automotive Pty. Ltd.
ABN: 72 657 573 544

Copyright Brown Davis Automotive Pty. Ltd. This document contains technical information the property of Brown Davis Automotive Pty. Ltd.

14. Fit filler hose to tank.	
15. Plug in fuel pump gauge and sender unit loom.	
20. Double check all fuel line clamps and security of fuel lines. Fill tank, road test and check for rattlers & squeaks.	