

Brown Davis Automotive Pty. Ltd.  
ABN: 72 657 573 544

Copyright Brown Davis Automotive Pty. Ltd. This document contains technical information the property of Brown Davis Automotive Pty. Ltd.

**IVECO DAILY 4X4 - 2013-PRESENT - 55S17W DUAL CAB – 157lt AUXILIARY TANK  
AUXILIARY FUEL TANK PARTS LIST AND FITTING INSTRUCTIONS  
PART NUMBER: IVD4A1**

Item #	Description	Quantity	Part No.	P	C
1	TANK—REPLACEMENT	1	IVD4A1	-	-
2	DRAIN PLUG—MAGNETIC—M14 (FITTED TO THE TANK)	1		-	-
3	HOSE – FUEL AND EMISSION - 8mm	2m			
4	HOSE – FUEL AND EMISSION - 12.5mm	800mm			
5	HOSE – TMP – 16mm	1.5m			
6	HOSE – FILLER – 22mm	70mm			
7	HOSE – FILLER – 44mm	70mm (x2)			
8	HOSE CLAMP – STAINLESS – 8-16mm	6			
9	HOSE CLAMP – STAINLESS – 12-22mm	2			
10	HOSE CLAMP – STAINLESS – 16-27mm	4			
11	HOSE CLAMP – STAINLESS – 20-32mm	3			
12	HOSE CLAMP – STAINLESS – 40-60mm	4			
13	FUEL PICK UP – 5/16" x 1/4" BSP ELBOW *CUT 445mm FROM THREAD*	1			
14	BRASS FITTING - ELBOW - 1/8" x 5/16" BSP	2			
15	BRASS FITTING - ELBOW - 5/8" x 1/4" BSP	1			
16	BRASS FITTING - TAIL BARB - 5/16" x 1/4" BSP	1			
17	BRASS FITTING - TAIL BARB - 1/2" x 1/4" BSP	1			
18	CABLE TIE - 8" BLACK	5			
19	CUSHION CLAMP 44mm	2			
20	WIRE – TWIN CORE – 3.0mm – BROWN/WHITE—WITH PLUG	2.5m			
21	SENDER UNIT - VDO 220-004	1			
22	FUEL PUMP – POSI-FLO	1			
23	FUEL FILTER – INLINE – 8mm	1			
24	BUZZER – PEEL – CP 5	1			
25	CRIMP FITTING – SPADE FEMALE 6mm - INSULATED - RED	1			
26	CRIMP FITTING – SPADE FEMALE 4mm - RED	1			
27	CRIMP FITTING - RING 5MM - RED	1			
28	CRIMP FITTING – JOINER 3mm - RED	1			
29	SCOTCH LOCK	1			
30	FUEL CAP - LOCKABLE - TRIDON	1			
31	SET SCREW – PAN HEAD – M4 x 10mm – PLATED 8.8	5			
32	WASHER – SPRING PLATED – M4	5			

**KIT CONTINUES ON NEXT PAGE**



# LONG RANGE FUEL TANKS

## IVD4A1

Brown Davis Automotive Pty. Ltd.  
ABN: 72 657 573 544

Copyright Brown Davis Automotive Pty. Ltd. This document contains technical information the property of Brown Davis Automotive Pty. Ltd.

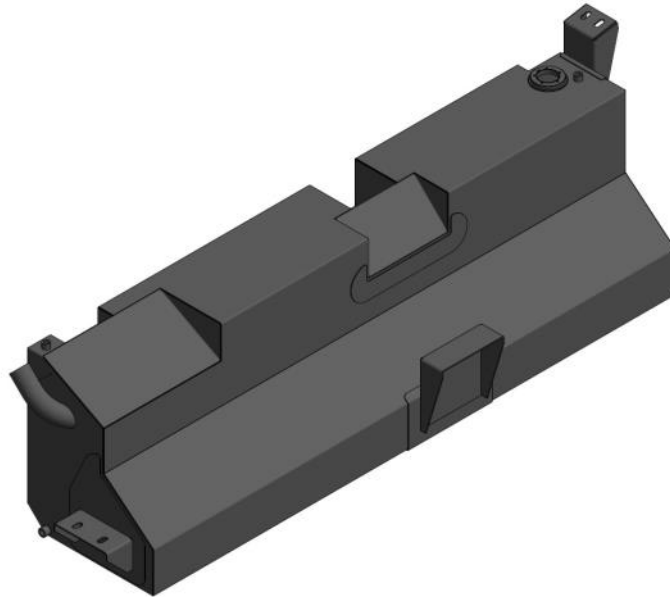
Item #	Description	Quantity	Part No.	P	C
33	SET SCREW – HEX – M8 x 25mm – ON WIRE	2			
34	SET SCREW – HEX – M10 x 25mm – ON WIRE	4			
35	SET SCREW – HEX – M6 x 30mm	2			
36	WASHER – SHAKEPROOF PLATED – M6	2			
37	WASHER – FLAT PLATED – M6	4			
38	NUT– STANDARD PLATED – M6	2			
39	WASHER – SHAKEPROOF PLATED – M8	2			
40	WASHER – FLAT PLATED – M8	2			
41	NUT– STANDARD PLATED – M8	4			
42	SET SCREW – HEX – M10 x 25mm	6			
43	WASHER – SHAKEPROOF PLATED – M10	10			
44	WASHER – PANEL PLATED – M10	12			
45	WASHER – FLAT PLATED – M10	2			
46	NUT– STANDARD PLATED – M10	20			
47	SELF TAPPING SCREWS	2			
48	50 x 40 - BACKUP PLATE	2	BP-CH-10-040050		
49	MOUNTING BRACKET - 1	1	TB-IVD4A1-1		
50	MOUNTING BRACKET - 2	1	TB-IVD4A1-2		
51	FILLER TUBE NECK - WITH THREAD GLUED IN	1	FT-IVD4A1-1		
52	FILLER TUBE	1	FT-IVD4A1-2		
53	T-PIECE	1	FT-IVD4A1-3		
54	WARRANTY CARD & INFORMATION	1			
55	BROWN DAVIS AUTOMOTIVE STICKER	1			

	STAFF MEMBERS INITIALS	DATE
KIT PACKED BY		
KIT CHECKED BY		

Brown Davis Automotive Pty. Ltd.  
ABN: 72 657 573 544

Copyright Brown Davis Automotive Pty. Ltd. This document contains technical information the property of Brown Davis Automotive Pty. Ltd.

### PART NUMBER: IVD4A1 AUXILIARY FUEL TANK PARTS LIST AND FITTING INSTRUCTIONS



#### WARNING:

**THIS FUEL TANK IS HEAVY. DO NOT ATTEMPT TO LIFT THIS FUEL TANK WITHOUT APPROPRIATE ASSISTANCE OR SERIOUS INJURY MAY RESULT**



#### WARNING:

**ENSURE A FIRE EXTINGUISHER IS AVAILABLE WHILST WORKING NEAR EXPOSED FUEL**



#### **APPROX FITTING TIME: 6 HOURS**

- CHECK CONTENTS OF KIT BEFORE COMMENCING FITMENT
- DRAIN VEHICLE FUEL TANK TO LOWEST LEVEL POSSIBLE BEFORE COMMENCING FITMENT
- BEFORE INSTALLATION THE BROWN DAVIS LONG RANGE TANK SHOULD BE WASHED OUT WITH THE SAME FUEL TYPE AS THE VEHICLE IT'S BEING FITTED TO
- VEHICLE SHOULD BE POSITIONED IN SAFE PLACE PRIOR TO COMMENCMENT

Any questions or information required in relation to the below instructions please do not hesitate to contact Brown Davis head office or one of our distributors.

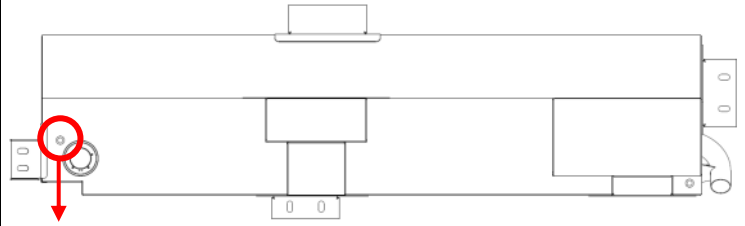
Phone: +61 (3) 9762 8722  
Email: [info@browndavis.com.au](mailto:info@browndavis.com.au)

Brown Davis Automotive Pty. Ltd.  
ABN: 72 657 573 544

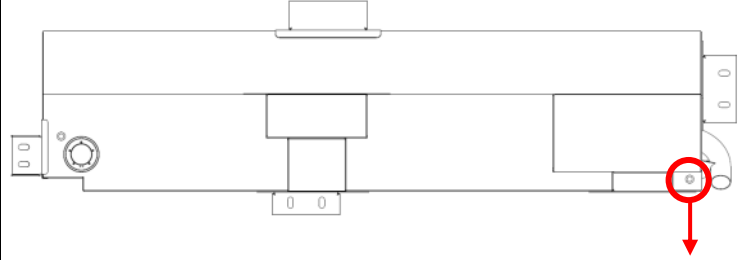
Copyright Brown Davis Automotive Pty. Ltd. This document contains technical information the property of Brown Davis Automotive Pty. Ltd.

#### SETUP OF AUXILIARY TANK

1. Screw in the **FUEL PICK UP – 5/16" x 1/4" BSP ELBOW** using teflon tape, thread sealant or the likes into the socket circled.
  - Have the elbow pointing in the directing of the arrow.



2. Screw in the **BRASS FITTING-ELBOW– 5/8" x 1/4" BSP** using teflon tape, thread sealant or the likes into the socket circled.
  - Have the elbow pointing in the directing of the arrow.

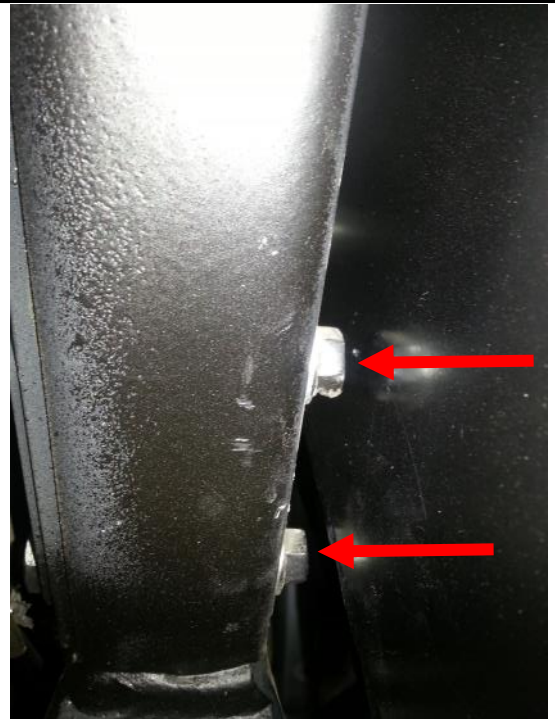


Brown Davis Automotive Pty. Ltd.  
ABN: 72 657 573 544

Copyright Brown Davis Automotive Pty. Ltd. This document contains technical information the property of Brown Davis Automotive Pty. Ltd.

#### SETUP FOR AUXILIARY TANK

3. Cut the threads off the bolts that travel through the chassis rail.



4. Drill a hole through the top of the front wall of the side step.
- Run the WIRE – TWIN CORE – 3.0mm – BROWN/WHITE—WITH PLUG from the dash to the tank location, ensuring the wire is safe. Feed the wire through an existing loom or grommet.
  - The end with the plug should be in the vehicles cab at the dash.
  - Brown Davis recommends to follow existing wiring where possible or other wise, follow fuel lines or air conditioning lines.



5. Locate somewhere on the dash to mount the **FUEL GUAGE/SWITCH – CP 309GS LED DASH UNIT.**
- Drill a 20mm (approx.) to install.



Brown Davis Automotive Pty. Ltd.  
ABN: 72 657 573 544

Copyright Brown Davis Automotive Pty. Ltd. This document contains technical information the property of Brown Davis Automotive Pty. Ltd.

6. Fit the two **BRASS FITTING - ELBOW - 1/8" x 5/16" BSP** into the **FUEL PUMP – POSI-FLO**. *\*\*As shown in photo\*\**
  - Install the **FUEL PUMP – POSI-FLO** to the vehicles floor, just above the transfer case.



7. Using **HOSE – FUEL AND EMISSION - 8mm** install the **FUEL FILTER – INLINE – 8mm** to the suction side of the pump.





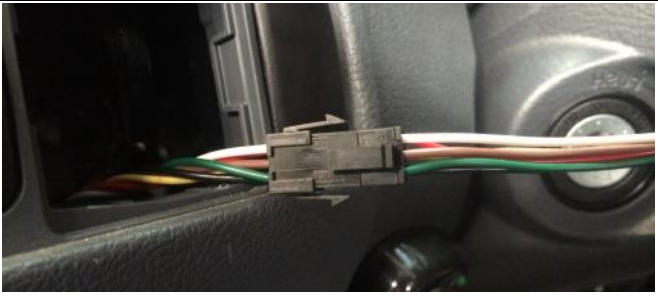
Brown Davis Automotive Pty. Ltd.

47 Holloway Drive, Bayswater, Victoria, Australia 3153

Ph: +61 (3) 9762 8722 | Fax: +61 (3) 9762 9829 | Email: [info@browndavis.com.au](mailto:info@browndavis.com.au) | Web: [www.browndavis.com.au](http://www.browndavis.com.au)

Brown Davis Automotive Pty. Ltd.  
ABN: 72 657 573 544

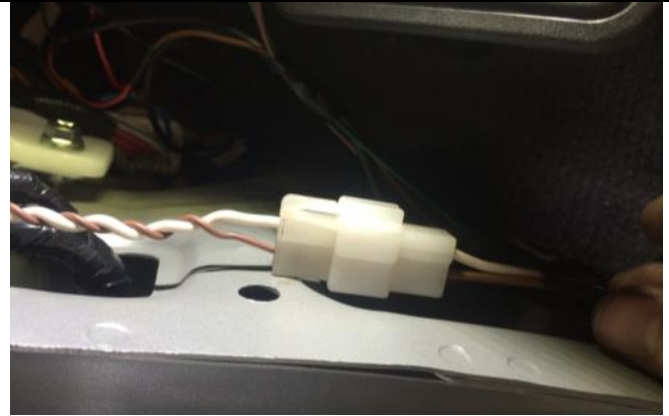
Copyright Brown Davis Automotive Pty. Ltd. This document contains technical information the property of Brown Davis Automotive Pty. Ltd.

<p>8. Locate 12 volt ignition wire</p>	
<p>9. Connect the single red wire from the <b>BUZZER – PEEL – CP 5</b> to the 12 volt ignition wire using the supplied SCOTCH LOCK or by soldering.</p>	
<p>10. Stick the <b>BUZZER – PEEL – CP 5</b> behind the driver side kick panel or dash.</p> <ul style="list-style-type: none"><li>• Earth the ring (circled in photo) by fastening it to a metal surface.</li></ul>	
<p>11. Connect the plugs from the <b>FUEL GUAGE/SWITCH – CP 309GS LED DASH UNIT</b> to the <b>BUZZER – PEEL – CP 5</b>.</p>	

Brown Davis Automotive Pty. Ltd.  
ABN: 72 657 573 544

Copyright Brown Davis Automotive Pty. Ltd. This document contains technical information the property of Brown Davis Automotive Pty. Ltd.

12. Connect the white plugs from both the **BUZZER – PEEL – CP 5** and the **WIRE – TWIN CORE – 3.0mm – BROWN/WHITE—WITH PLUG**.



13. Connect the **CRIMP FITTING – JOINER 3mm - RED** to the red wire on the **FUEL PUMP – POSI-FLO**.

- Join the white wire to the opposite end of the **CRIMP FITTING – JOINER 3mm - RED**.
- NOTE: The white wire should be trimmed first to avoid excess wire. Keep off cut wire for later step.

14. Attach the **CRIMP FITTING – SPADE FEMALE 6mm - INSULATED - RED** to the brown wire so it can be plugged to the center plug on the **SENDER UNIT - VDO 220-004** (circled in photo) that is fitted to the tank.

- NOTE: The brown wire should be trimmed first to avoid excess wire.



15. The sender unit must also be earthed.

- Using the white off cut wire connect the **CRIMP FITTING - RING 5MM - RED** to one end and the **CRIMP FITTING – SPADE FEMALE 4mm - RED** to the other.
- Plug the **CRIMP FITTING – SPADE FEMALE 4mm - RED** to the **SENDER UNIT - VDO 220-004** (circled in photo).
- Connect the **CRIMP FITTING - RING 5MM - RED** to the chassis.





Brown Davis Automotive Pty. Ltd.  
ABN: 72 657 573 544

Copyright Brown Davis Automotive Pty. Ltd. This document contains technical information the property of Brown Davis Automotive Pty. Ltd.

#### INSTALLATION OF AUXILIARY TANK

16. Using a lifting device, jack the tank into place. Connect the wire to the **SENDER UNIT - VDO 220-004** before tank is in final position.



17. Drill two holes to suit M8 bolts through the centre driver-side bracket, ensuring that you are going through the floor rail that it mounts against. Holes should be near the outer edge of the bracket. *\*\*use photo as reference\*\**

- Drop the tank enough to feed the two **SET SCREW – HEX – M8 x 25mm – ON WIRE** through a hole on the rail above the tank.



Brown Davis Automotive Pty. Ltd.  
ABN: 72 657 573 544

Copyright Brown Davis Automotive Pty. Ltd. This document contains technical information the property of Brown Davis Automotive Pty. Ltd.

18. Bolt the secondary tank bracket (shown in photo) to the rear tank bracket using two of the M10 bolts and washers supplied.

- Go into the cab of the vehicle and pull up the flooring behind the rear seats.
- Drill a hole to suit an M10 bolt through the vehicles floor at the top side of the secondary bracket taking care not to damage the flooring.



19. Place the 50x40—BACKUP PLATES provided over the holes.

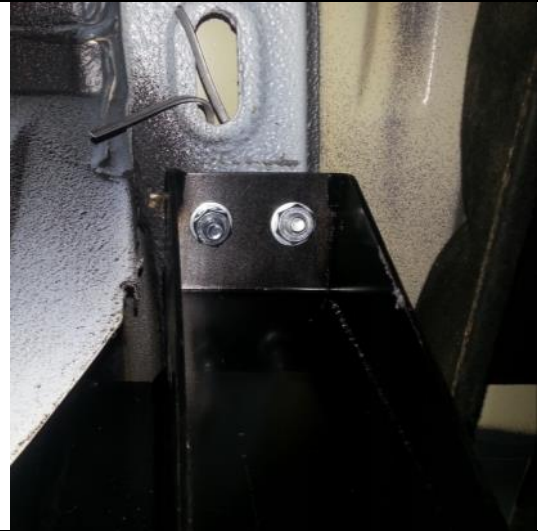
- Using two M10 bolts, washers provided and nuts, fasten bracket in place.
- Double nut the bolts.



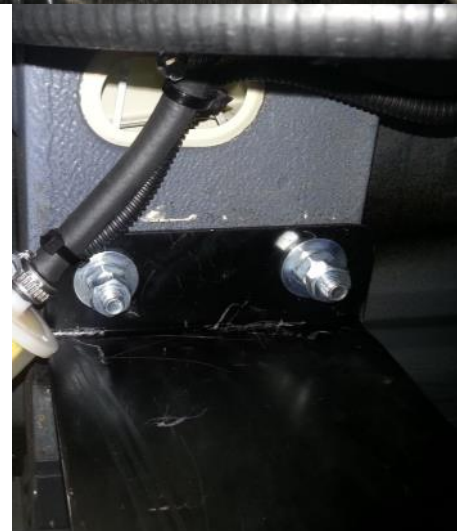
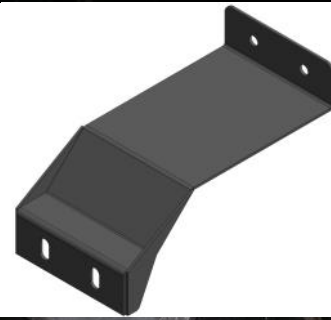
Brown Davis Automotive Pty. Ltd.  
ABN: 72 657 573 544

Copyright Brown Davis Automotive Pty. Ltd. This document contains technical information the property of Brown Davis Automotive Pty. Ltd.

20. Drill holes to suit an M10 bolt through the rail for the front tank bracket.
- Feed two **SET SCREW – HEX – M10 x 25mm – ON WIRE** through the opening just in front of the bracket.
  - Secure with washers and nuts supplied.
  - Double nut the bolts.



21. Fit the other secondary bracket to the tank bracket on the passenger side of the vehicle (gusseted side against tank bracket). Ensure the bracket does not make contact with the chassis.
- Again drill a hole to suit an M10 bolt through where the bracket meets the rail.
  - Feed two **SET SCREW – HEX – M10 x 25mm – ON WIRE** through the opening just in front of the bracket.
  - Secure with washers and nuts supplied.
  - Double nut the bolts.



Brown Davis Automotive Pty. Ltd.  
ABN: 72 657 573 544

Copyright Brown Davis Automotive Pty. Ltd. This document contains technical information the property of Brown Davis Automotive Pty. Ltd.

22. Fit filler tube to auxiliary tank using **HOSE – FILLER – 44mm** and clamps.
- Make sure the 1/4 BSP on the filler tube faces front of vehicle.
  - Use cushion clamps to hold filler tube in place.
  - Attach filler neck to filler tube to the filler tube (previously installed) using the other **HOSE – FILLER – 44mm** and clamps.
  - Screw in the **BRASS FITTING - TAIL BARB - 1/2" x 1/4" BSP** using teflon tape, thread sealant or the likes into the socket welded to the filler pipe.



Brown Davis Automotive Pty. Ltd.  
ABN: 72 657 573 544

Copyright Brown Davis Automotive Pty. Ltd. This document contains technical information the property of Brown Davis Automotive Pty. Ltd.

23. Disconnect the fast fill breather line from the standard main tank.
  - Using the **HOSE – FILLER – 22mm** and hose clamps join the **T-PIECE** inbetween the standard tank fitting and the line.



Brown Davis Automotive Pty. Ltd.  
ABN: 72 657 573 544

Copyright Brown Davis Automotive Pty. Ltd. This document contains technical information the property of Brown Davis Automotive Pty. Ltd.

24. Run the **HOSE – FUEL AND EMISSIONS – 12.5mm** from the **BRASS FITTING - TAIL BARB - 1/2" x 1/4" BSP** in the filler tube (installed in step 22) and run in safely to the **T -PIECE** (installed in step 23). Join with hose clamps.

- Ensure the hose runs as high as possible as this hose is a vent and also an over-flow outlet.



25. A hole must be drilled into the standard tank and a thread for the **BRASS FITTING - TAIL BARB - 5/16" x 1/4" BSP** must be tapped (circled in photo).

- Connect **HOSE – FUEL AND EMISSION - 8mm** from the **FUEL PICK UP – 5/16" x 1/4" BSP ELBOW** (installed in step 1) to the fuel filter (installed in step 7).
- Use left over hose to connects the flow side of the fuel pump to the **BRASS FITTING - TAIL BARB - 5/16" x 1/4" BSP** screwed into standard tank.

\* Fuel system should run  
**FUEL PICK UP – 5/16" x 1/4" BSP ELBOW >>> FUEL FILTER – INLINE – 8mm >>> FUEL PUMP – POSI-FLO >>> STANDARD TANK**



Brown Davis Automotive Pty. Ltd.

ABN: 72 657 573 544

Copyright Brown Davis Automotive Pty. Ltd. This document contains technical information the property of Brown Davis Automotive Pty. Ltd.

26. Run the left over **HOSE – TMP – 16mm** hose from the **BRASS FITTING-ELBOW– 5/8" x 1/4" BSP** (installed in step 2) and run in safely to the pipe on the top of the filler tube (installed in step 22). Join with hose clamps.



27. Double check all fuel line clamps and security of fuel lines. Fill tank and double check all fuel system for leaks. Road test and check for rattlers & squeaks.