

Brown Davis Automotive Pty. Ltd.
ABN: 72 657 573 544

Copyright Brown Davis Automotive Pty. Ltd. This document contains technical information the property of Brown Davis Automotive Pty. Ltd.

ISUZU MUX – 100lt AUXILARY TANK
LONG RANGE FUEL TANK PARTS LIST AND FITTING INSTRUCTIONS
PART NUMBER: ISMUXA1

Item #	Description	Quantity	Part No.	P	C
1	TANK – AUXILARY	1	ISMUXA1	-	-
2	DRAIN PLUG—MAGNETIC—M14 (FITTED TO THE TANK)	1	DP-M14	-	-
3	HOSE - FILLER - 35mm	60mm (x2)			
4	HOSE - FILLER - 35mm	120mm			
5	HOSE – TMP - 16mm	1.2m			
6	HOSE – FUEL AND EMISSIONS - 8mm	800mm			
7	HOSE CLAMPS – STAINLESS – 12-22mm	10			
8	HOSE CLAMPS – STAINLESS – 8-16mm	7			
9	HOSE CLAMPS – STAINLESS – 32-50mm	6			
10	BRASS – ELBOW – 5/8" x 3/8 x BSP	3			
11	BRASS FITTING-TAIL BARB– 1/8" x 5/16" BSP	2			
12	5/8" x 5/8" x 5/16" TEE PIECE	2			
13	CABLE TIES – 180mm	10			
14	SENDER UNIT – VDO 220-004 (fitted to tank)	1			
15	FUEL PUMP – POSI FLO	1			
16	FUEL GUAGE/SWITCH – CP 309GS LED DASH UNIT	1			
17	BUZZER – PEEL – CP 5	1			
18	FUEL FILTER - INLINE - 8mm	1			
19	WIRE – TWIN CORE – 3.0mm – BROWN/WHITE	6m			
20	CRIMP FITTING – SPADE FEMALE 4mm - RED	1			
21	CRIMP FITTING - RING 5MM - RED	1			
22	SCOTCH LOCK	1			
23	SET SCREWS - PAN HEAD - M4x 10mm	5			
24	WASHER – SPRING - PLATED – M4	5			
25	SET SCREWS - HEX - M6 x 30mm	1			
26	WASHER – SPRING - PLATED – M6	1			
27	SET SCREWS - HEX - M10 x 100mm	2			
28	SET SCREWS - HEX - M10 x 30mm	4			
29	NUT – NYLOC – M10	2			
30	WASHER – PANEL – PLATED – M10	8			
31	WASHER – SPRING - PLATED – M10	4			
32	SET SCREWS - HEX - M12 x 40mm - METRIC FINE	8			

KIT CONTINUES ON NEXT PAGE

Brown Davis Automotive Pty. Ltd.
47 Holloway Drive, Bayswater, Victoria, Australia 3153

Ph: +61 (3) 9762 8722 | Fax: +61 (3) 9762 9829 | Email. info@browndavis.com.au | Web. www.browndavis.com.au

Brown Davis Automotive Pty. Ltd.
 ABN: 72 657 573 544

Copyright Brown Davis Automotive Pty. Ltd. This document contains technical information the property of Brown Davis Automotive Pty. Ltd.

tem #	Description	Quantity	Part No.	P	C
33	WASHER – PANEL – PLATED – M12	8			
34	WASHER – SPRING - PLATED – M12	8			
35	MOUNTING BRACKET WITH 2x CAPTIVE THREADS	2	TB-HCRG7A1-1		
36	MOUNTING BRACKET 160mm LONG	1	TB-HCRG7A1-2		
37	MOUNTING BRACKET 50mm LONG	1	TB-HCRG7A1-3		
38	Y-PIECE FILLER TUBE	1	YF-ISMUXA1-1		
39	Y-PIECE FAST FILL TUBE	1	YF-ISMUXA1-2		
40	FUEL PICK UP – 5/16" x 1/4" BSP ELBOW **CUT TO SUIT TANK	1			
41	GROMMET – 45mm	1			
42	WARRANTY CARD & INFORMATION	1			
43	BROWN DAVIS AUTOMOTIVE STICKER	1			

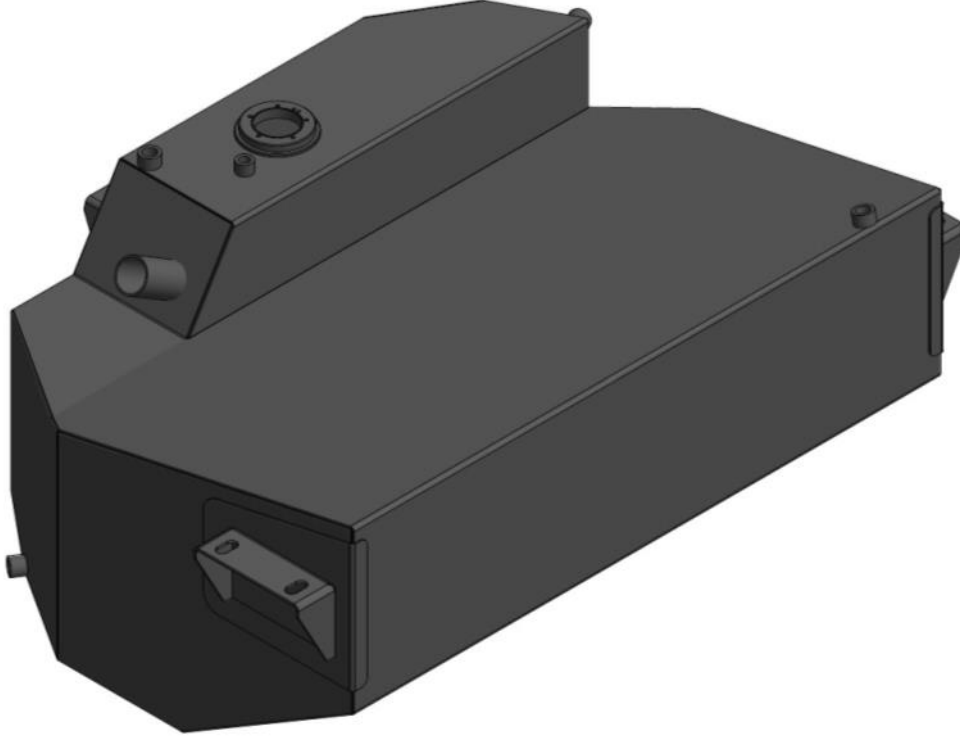
	
TB-HCRGR7A1-1- REFER TO ITEM 35	TB-HCRGR7A1-2/TB-HCRGR7A1-2 - REFER TO ITEM 36-37
	
YF-ISMUXA1-1—REFER TO ITEM 38	YF-ISMUXA1-2—REFER TO ITEM 39

	STAFF MEMBERS INITIALS	DATE
KIT PACKED BY		
KIT CHECKED BY		

Brown Davis Automotive Pty. Ltd.
ABN: 72 657 573 544

Copyright Brown Davis Automotive Pty. Ltd. This document contains technical information the property of Brown Davis Automotive Pty. Ltd.

**HOLDEN COLORADO RG – 100lt AUXILIARY TANK
LONG RANGE FUEL TANK PARTS LIST AND FITTING INSTRUCTIONS
PART NUMBER: ISMUXA1**



WARNING:

THIS FUEL TANK IS HEAVY. DO NOT ATTEMPT TO LIFT THIS FUEL TANK WITHOUT APPROPRIATE ASSISTANCE OR SERIOUS INJURY MAY RESULT



WARNING:

ENSURE A FIRE EXTINGUISHER IS AVAILABLE WHILST WORKING NEAR EXPOSED FUEL



-CHECK CONTENTS OF KIT BEFORE COMMENCING FITMENT

-DRAIN VEHICLE FUEL TANK TO LOWEST LEVEL POSSIBLE BEFORE COMMENCING FITMENT

-BEFORE INSTALLATION THE BROWN DAVIS LONG RANGE TANK SHOULD BE WASHED OUT WITH THE SAME FUEL TYPE AS THE VEHICLE IT'S BEING FITTED TO

Any questions or information required in relation to the below instructions please do not hesitate to contact Brown Davis head office or one of our distributors.

Phone: +61 (3) 9762 8722 Email: info@browndavis.com.au

Brown Davis Automotive Pty. Ltd.

47 Holloway Drive, Bayswater, Victoria, Australia 3153

Ph: +61 (3) 9762 8722 | Fax: +61 (3) 9762 9829 | Email: info@browndavis.com.au | Web: www.browndavis.com.au

Brown Davis Automotive Pty. Ltd.
ABN: 72 657 573 544

Copyright Brown Davis Automotive Pty. Ltd. This document contains technical information the property of Brown Davis Automotive Pty. Ltd.

1. Remove the spare wheel and the winder mechanism
 - Fit rubber grommet to hole in the floor left from the winder mechanism.
 - Remove left hand inner wheel arch cover to access filler.



2. Loosen and remove the filler tube.
 - Cut the existing filler to fit Y-Piece filler tube (item 38).
 - Using the HOSE – 1'3/8" and HOSE CLAMPS – STAINLESS – 32-50mm seal the Y-PIECE FILLER in place.
 - Refit filler now with Y-PIECE to car



Brown Davis Automotive Pty. Ltd.

47 Holloway Drive, Bayswater, Victoria, Australia 3153

Ph: +61 (3) 9762 8722 | Fax: +61 (3) 9762 9829 | Email. info@browndavis.com.au | Web. www.browndavis.com.au

Brown Davis Automotive Pty. Ltd.
ABN: 72 657 573 544

Copyright Brown Davis Automotive Pty. Ltd. This document contains technical information the property of Brown Davis Automotive Pty. Ltd.

3. Install Y-PIECE FAST FILL TUBE to the fast fill pipe at rubber joiner.

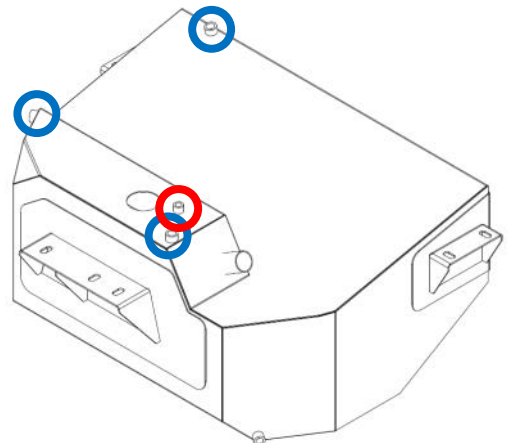


4. Fit 5/8" x 5/8" x 5/16" TEE PIECE to the lower part of the fast fill rubber hose, close to the tank.



5. Install the 3 BRASS-ELBOW-5/16" x 3/8 BSP to the tank.. (Fittings circled in blue)

- Check the FUEL PICK UP length prior to installing to tank. Screw elbow socket in. (Fitting circled in red)
- Fit HOSE - 8mm - 500 LONG onto pick up elbow.



Brown Davis Automotive Pty. Ltd.

47 Holloway Drive, Bayswater, Victoria, Australia 3153

Ph: +61 (3) 9762 8722 | Fax: +61 (3) 9762 9829 | Email: info@browndavis.com.au | Web: www.browndavis.com.au

Brown Davis Automotive Pty. Ltd.
ABN: 72 657 573 544

Copyright Brown Davis Automotive Pty. Ltd. This document contains technical information the property of Brown Davis Automotive Pty. Ltd.

6. Locate somewhere on the dash to mount the **FUEL GAUGE/SWITCH – CP 309GS LED DASH UNIT**. **photo is for reference only**

- Drill a 20mm (approx.) to install.



7. Locate 12 volt ignition wire

8. Connect the single red wire from the **BUZZER – PEEL – CP 5** to the 12 volt ignition wire using the supplied SCOTCH LOCK or by soldering.



9. Mount the **BUZZER – PEEL – CP 5** to a metal surface behind the driver side kick panel or dash.

- NOTE: Most vehicles will have a metal tag with a bolt that can be used (shown in photo) but in some cases the unit will need to be installed with the **SCREW - SELF TAPPER** supplied.
- The eyelet must be touching a metal surface to earth the setup.



Brown Davis Automotive Pty. Ltd.

47 Holloway Drive, Bayswater, Victoria, Australia 3153

Ph: +61 (3) 9762 8722 | Fax: +61 (3) 9762 9829 | Email: info@browndavis.com.au | Web: www.browndavis.com.au

Brown Davis Automotive Pty. Ltd.
ABN: 72 657 573 544

Copyright Brown Davis Automotive Pty. Ltd. This document contains technical information the property of Brown Davis Automotive Pty. Ltd.

10. Connect the plugs from the **FUEL GAUGE/SWITCH – CP 309GS LED DASH UNIT** to the **BUZZER – PEEL – CP 5**.

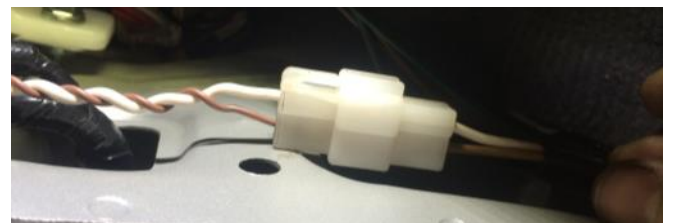


11. Mount the **FUEL PUMP – POSI-FLO** above the diff.
- Connect the black wire to the chassis to earth the pump.



12. Run the **WIRE – TWIN CORE – 3.0mm – BROWN/WHITE—WITH PLUG** from the dash to the tank location, ensuring the wire is safe. Feed the wire through an existing loom or grommet.
- The end with the plug should be in the vehicles cab at the dash.
 - Brown Davis recommends to follow existing wiring where possible or other wise, follow fuel lines or air conditioning lines.

13. Connect the white plugs from both the **BUZZER – PEEL – CP 5** and the **WIRE – TWIN CORE – 3.0mm – BROWN/WHITE—WITH PLUG**.



Brown Davis Automotive Pty. Ltd.

47 Holloway Drive, Bayswater, Victoria, Australia 3153

Ph: +61 (3) 9762 8722 | Fax: +61 (3) 9762 9829 | Email: info@browndavis.com.au | Web: www.browndavis.com.au

Brown Davis Automotive Pty. Ltd.
ABN: 72 657 573 544

Copyright Brown Davis Automotive Pty. Ltd. This document contains technical information the property of Brown Davis Automotive Pty. Ltd.

14. Connect the **CRIMP FITTING – JOINER 3mm - RED** to the red wire on the **FUEL PUMP – POSI-FLO**.
- Join the white wire to the opposite end of the **CRIMP FITTING – JOINER 3mm - RED**.
 - NOTE: The white wire should be trimmed first to avoid excess wire. Keep off cut wire for later step.

15. Attach the **CRIMP FITTING – SPADE FEMALE 6mm - INSULATED - RED** to the brown wire so it can be plugged to the center plug on the **SENDER UNIT - VDO 220-004** (circled in photo) that is fitted to the tank once the tank is lifted in place at step 17.
- NOTE: The brown wire should be trimmed first to avoid excess wire.



16. The sender unit must also be earthed.
- Using the white off cut wire connect the **CRIMP FITTING - RING 5MM - RED** to one end and the **CRIMP FITTING – SPADE FEMALE 4mm - RED** to the other.
 - Plug the **CRIMP FITTING – SPADE FEMALE 4mm - RED** to the **SENDER UNIT - VDO 220-004** (circled in photo).
 - Connect the **CRIMP FITTING - RING 5MM - RED** to the chassis.



Brown Davis Automotive Pty. Ltd.
ABN: 72 657 573 544

Copyright Brown Davis Automotive Pty. Ltd. This document contains technical information the property of Brown Davis Automotive Pty. Ltd.

17. Fit the left and right **MOUNTING BRACKET WITH 2x CAPTIVE THREADS** to the chassis using the **BOLTS-HEX-M12 x 40mm** or the 4 standard bolts holding the tow bar.



Brown Davis Automotive Pty. Ltd.

47 Holloway Drive, Bayswater, Victoria, Australia 3153

Ph: +61 (3) 9762 8722 | Fax: +61 (3) 9762 9829 | Email. info@browndavis.com.au | Web. www.browndavis.com.au

Brown Davis Automotive Pty. Ltd.
ABN: 72 657 573 544

Copyright Brown Davis Automotive Pty. Ltd. This document contains technical information the property of Brown Davis Automotive Pty. Ltd.

18. Lift tank into position using lifting device.
- Whilst lifting tank connect brown wire to tanks sender unit (as mentioned in step 15) and earth the sender unit (as mentioned in step 16)
 - Also feed rubber breather hose over Cross member of car.
 - Connect the filler and fast fill hoses to the tank.



Brown Davis Automotive Pty. Ltd.
ABN: 72 657 573 544

Copyright Brown Davis Automotive Pty. Ltd. This document contains technical information the property of Brown Davis Automotive Pty. Ltd.

19. When tank is in position, fit the 4 **SET SCREWS-HEX-M10 x 30mm** onto rear mounting brackets.



20. Drill 3 mounting holes through cross member at the front of tank.
- Place the **MOUNTING BRACKET 160mm LONG** and the **MOUNTING BRACKET 50mm LONG** on top of the cross member so the holes line up.
 - Use the 3 **SET SCREWS-HEX-M10 x 75mm** and the **NUT – NYLOC – M10** with washers to secure front bracket.
 - Insure all bolts are tight.



Brown Davis Automotive Pty. Ltd.

47 Holloway Drive, Bayswater, Victoria, Australia 3153

Ph: +61 (3) 9762 8722 | Fax: +61 (3) 9762 9829 | Email: info@browndavis.com.au | Web: www.browndavis.com.au

Brown Davis Automotive Pty. Ltd.
ABN: 72 657 573 544

Copyright Brown Davis Automotive Pty. Ltd. This document contains technical information the property of Brown Davis Automotive Pty. Ltd.

21. Fit fuel filter to pickup hose and connect to pump then tighten clamps.

- Fit Vent crossover hose on driver-side of tank to the 2 [BRASS-ELBOW-5/16" x 3/8 BSP](#)
- * Hose needs to run over black cross member close to floor making sure it has no low points.
- Connect fast fill breather to [BRASS-ELBOW-5/16" x 3/8 BSP](#) just above the filler.
- Make sure all clamps are tight.
- Check all clamps on filter and refit wheel cover.



22. Double check all fuel line clamps and security of fuel lines. Fill tank and check for leaks. Road test and check for rattles & squeaks. Re-check for fuel leaks.

Brown Davis Automotive Pty. Ltd.

47 Holloway Drive, Bayswater, Victoria, Australia 3153

Ph: +61 (3) 9762 8722 | Fax: +61 (3) 9762 9829 | Email: info@browndavis.com.au | Web: www.browndavis.com.au