

Item #	Description	Quantity	Part No.	P	C
1	FUEL FILTER - ASSEMBLY	1	42093		
2	FUEL FILTER MOUNTING BRACKET (PART A + B)	1	FF-TP150		
3	HOSE - FUEL AND EMISSION - 10mm	400mm			
4	HOSE CLAMP - STAINLESS - 8-16mm	2			
5	BRASS - TAILBARB - 3/8" x 1/4" BSP	2			
6	BRASS - PLUG - HEX INTERNAL SOCKET - 1/4" BSP	2	06404		
7	SET SCREW - HEX - M6 x 20mm	4			
8	WASHER - FLAT - M6	4			
9	WASHER - PANEL - M6	4			
10	NUT - NYLOC - M6	4			
11	SET SCREW - HEX - M8 x 30mm	2			
12	WASHER - FLAT - M8	4			
13	NUT - NYLOC - M8	2			
14	P-CLAMP - RUBBERISED - NORMA 18	1	RSGU1		
15	OPERATION AND WARRANTY INFORMATION	1			
16	BROWN DAVIS AUTOMOTIVE STICKER	1			

	STAFF INIT	DATE
KIT PACKED BY		
KIT CHECKED BY		

Taking people around Australia since 1978



DATE LAST EDITED: 21/12/2016

READ BEFORE COMMENCING FITMENT OF FUEL FILTER SYSTEM



- Check contents of the kit before commencing fitment.
- Brown Davis recommends having the fuel system disconnected for as minimal time as possible as some newer vehicles have fuel senses which if left with no fuel for a period of time will prevent the vehicle to start.
- See vehicles owners manual on details on how to bleed the fuel system once fuel filter is installed.

Any questions or information required in relation to the following instructions please do not hesitate to contact Brown Davis head office or one of our distributors.

Phone: +61 (3) 9762 8722

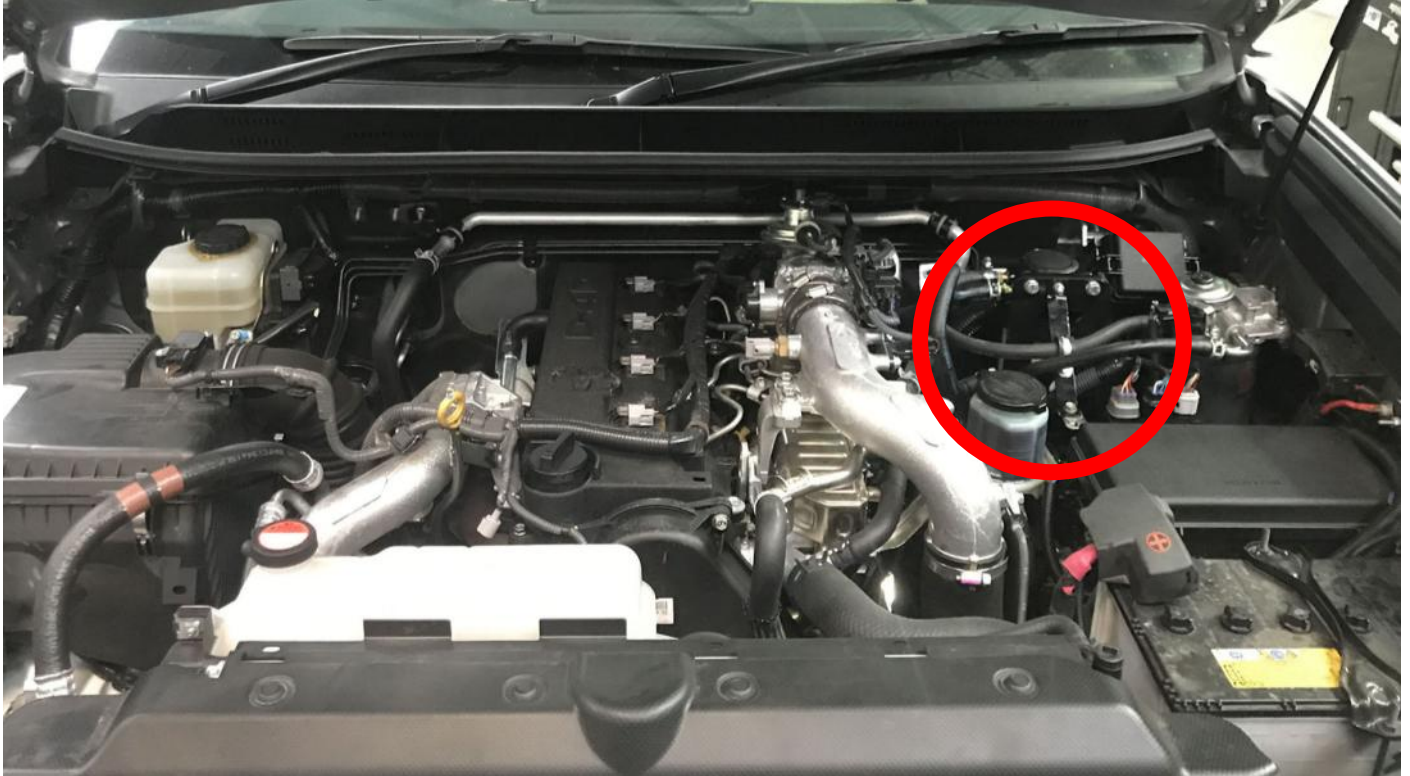
Email: info@browndavis.com.au



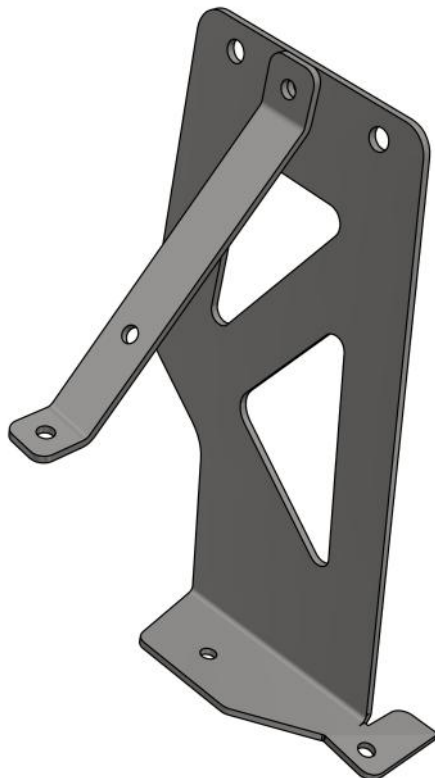
WARNING:

**ENSURE A FIRE EXTINGUISHER IS AVAILABLE WHILST WORKING
NEAR EXPOSED FUEL**

FUEL FILTER LOCATION



FUEL FILTER KIT



Loosen and move hose clamps



New filter bracket will be installed vertically into this area (1)

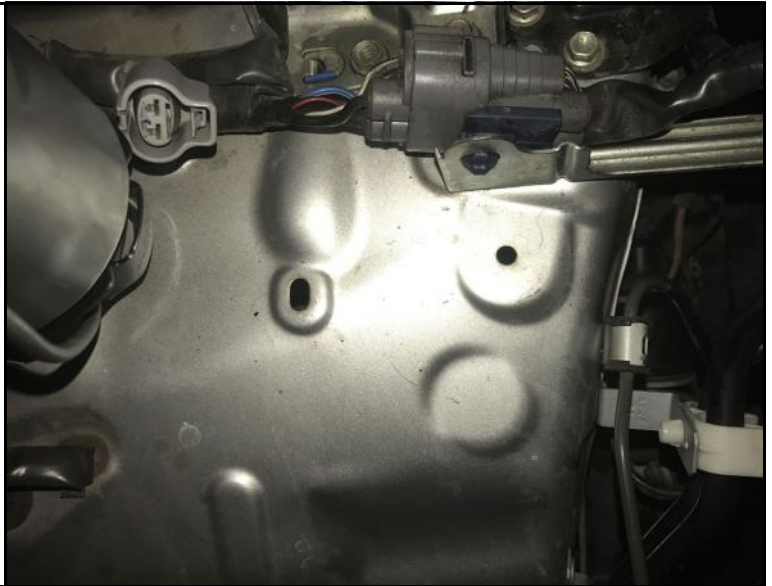
Remove bolt (2) and save for later



Move components aside as needed



Cleared space for filter bracket, from above



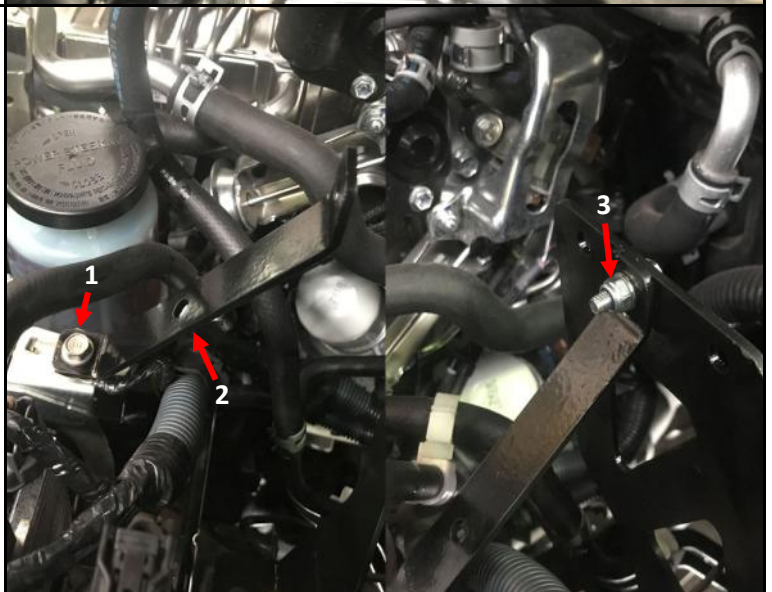
Fasten filter bracket-base to chassis holes



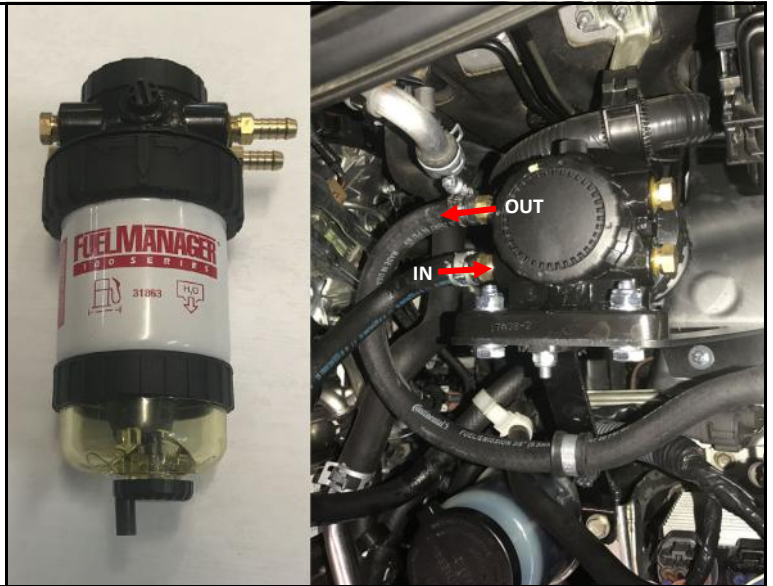
Earlier removed bolt (1) can now be used to secure lower end of bracket-brace

Ensure brace hole (2) installs in the lower position

Join the bracket brace to the main filter bracket with a nyloc nut (3)



Use thread sealant or Teflon tape to fit the brass fittings to the fuel filter and install as shown



Use the supplied fuel hose (1) to connect the fuel filter as pictured

The P-clamp can now secure the new fuel hose to the bracket-brace (2)



Reinstall hose clamps and ensure all are secure

