

Brown Davis Automotive Pty. Ltd.
ABN: 72 657 573 544

Copyright Brown Davis Automotive Pty. Ltd. This document contains technical information the property of Brown Davis Automotive Pty. Ltd.

Item #	Description	Quantity	Part No.	P	C
1	FUEL FILTER - ASSEMBLY	1	42093		
2	FUEL FILTER MOUNTING BRACKET	1	FF-TL70		
3	HOSE - FUEL AND EMISSION - 12.7mm	1730mm			
4	HOSE - FUEL AND EMISSION - 12.7mm	1730mm			
5	HOSE CLAMP - STAINLESS - 12-22mm	4			
6	BRASS - TAILBARB - 1/2" x 1/4" BSP	2			
7	BRASS - PLUG - HEX INTERNAL SOCKET - 1/4" BSP	2	06404		
8	JOINER - NYLON - 12.7mm (1/2")	1			
9	180mm CABLE TIE	5			
10	SET SCREW - HEX - M8 x 25mm	1			
11	SET SCREW - HEX - M8 x 30mm	2			
12	WASHER - SPRING- M8	1			
13	WASHER - FLAT - M8	5			
14	NUT - NYLOC - M8	2			
15	OPERATION AND WARRANTY INFORMATION	1			
16	BROWN DAVIS AUTOMOTIVE STICKER	1			

	STAFF INIT	DATE
KIT PACKED BY		
KIT CHECKED BY		

Taking people around Australia since 1978



DATE LAST EDITED: 21/12/2016

READ BEFORE COMMENCING FITMENT OF FUEL FILTER SYSTEM



- Check contents of the kit before commencing fitment.
- Brown Davis recommends having the fuel system disconnected for as minimal time as possible as some newer vehicles have fuel senses which if left with no fuel for a period of time will prevent the vehicle to start.
- See vehicles owners manual on details on how to bleed the fuel system once fuel filter is installed.

Any questions or information required in relation to the following instructions please do not hesitate to contact Brown Davis head office or one of our distributors.

Phone: +61 (3) 9762 8722

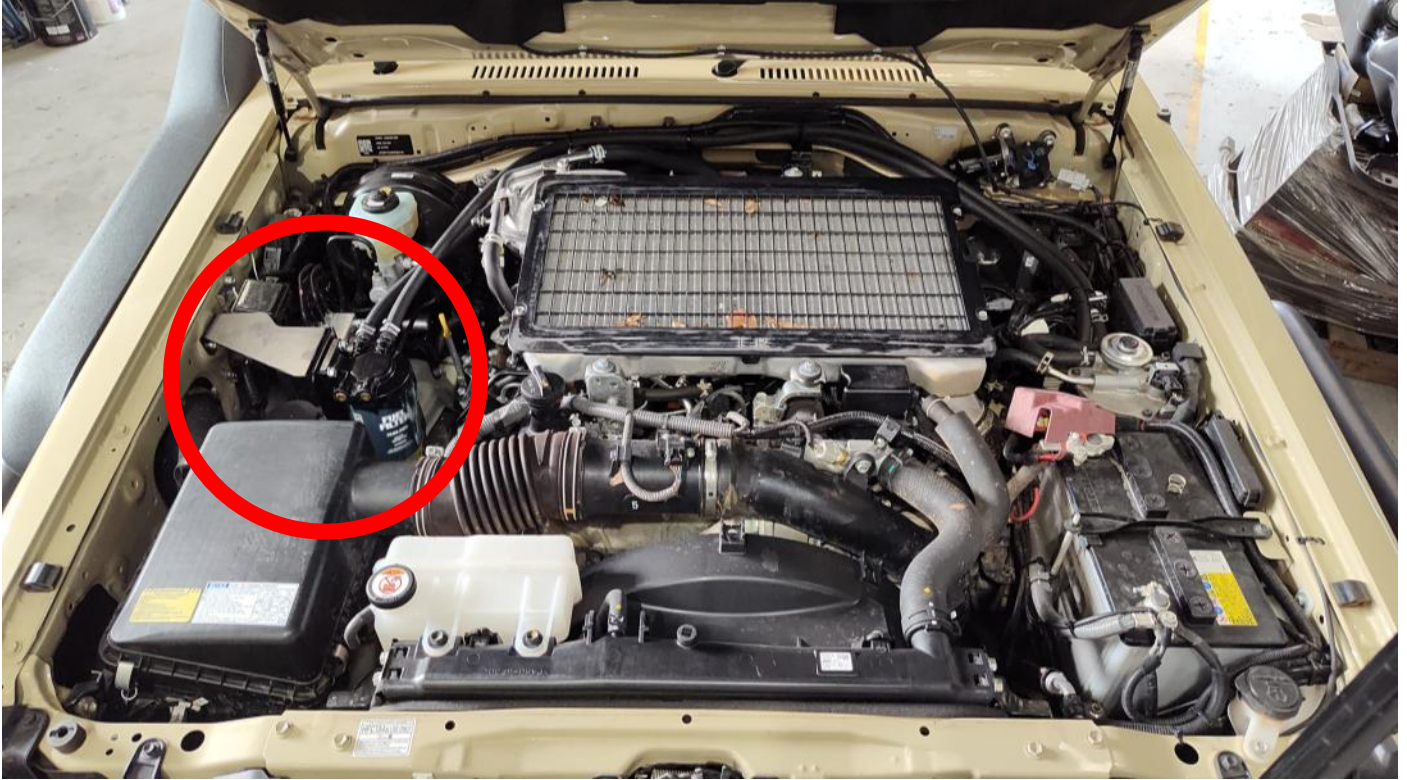
Email: info@browndavis.com.au



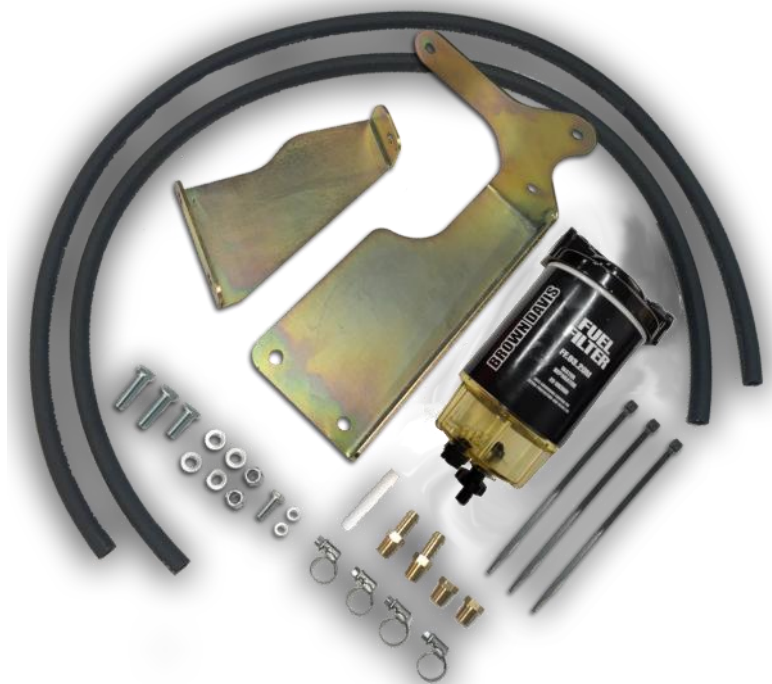
WARNING:

**ENSURE A FIRE EXTINGUISHER IS AVAILABLE WHILST WORKING
NEAR EXPOSED FUEL**

FUEL FILTER LOCATION



FUEL FILTER KIT



Remove bolts at base of power steering mount

NOTE: Some vehicles with large snorkels will require the airbox to be removed to access the last bolt.



Insert lower FF-TL70 section underneath mount and re-secure with bolts



Insert upper FF-TL70 section between the bracket and the chassis wall and secure with the supplied bolt.



Assemble the fuel filter as shown, making sure to not over tighten the filter or glass bowl.

Note: Make sure to lubricate the o-rings with either oil or diesel.



Install the brass fittings
in the filter as per the
diagram.

1/4" BSP plugs = red
1/2" x 1/4" BSP BARB = blue

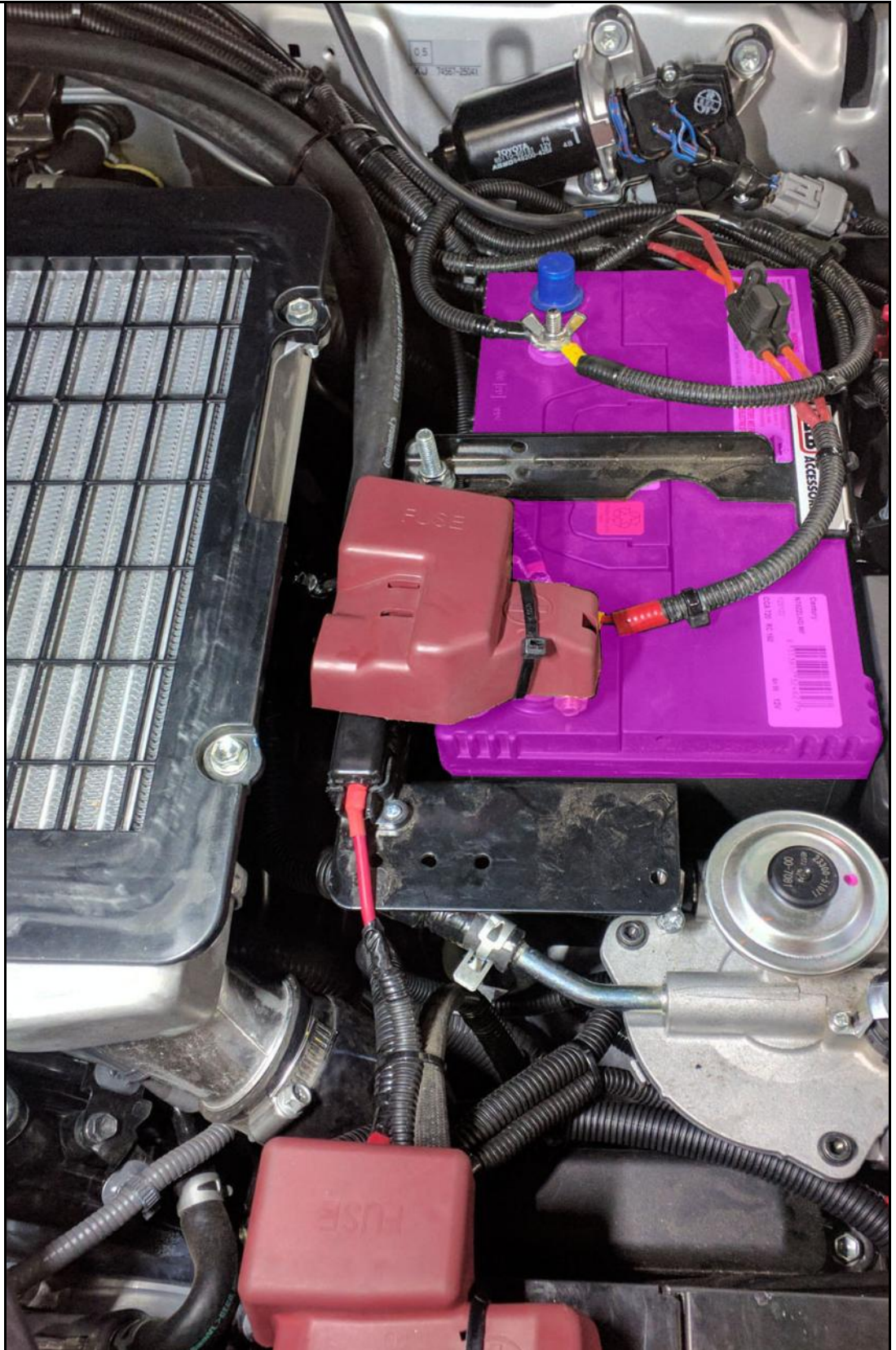


Install fuel filter
assembly in bracket and
secure



If your vehicle has an auxiliary battery like the one pictured here, you will need both hoses to remain at the provided length of 1730mm.

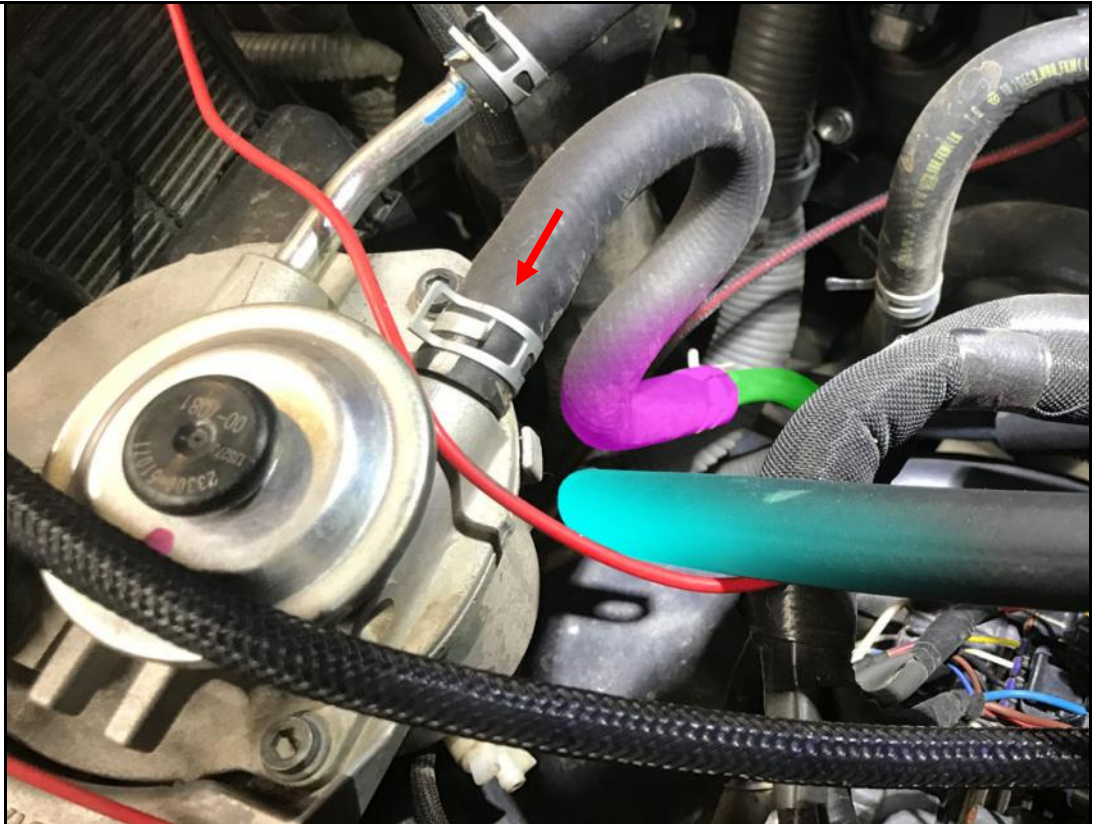
Vehicles with no battery in this location can trim one hose from 1730mm down to 1400mm.



BEFORE

* Fuel flow direction indicated with arrows

* Supplied hoses:
1730mm = blue
1400mm = orange



AFTER



Feed new fuel hose
near firewall as shown

Secure with zip ties



Connect hoses to new
filter and fasten using
supplied hose clamps

