

Brown Davis Automotive Pty. Ltd.

ABN: 72 657 573 544

Copyright Brown Davis Automotive Pty. Ltd. This document contains technical information the property of Brown Davis Automotive Pty. Ltd.

Item #	Description	Quantity	Part No.	P	C
1	FUEL FILTER - ASSEMBLY	1	42093		
2	FUEL FILTER MOUNTING BRACKET	1	FF-TH05		
3	HOSE - FUEL AND EMISSION - 10mm	1530mm			
4	HOSE - FUEL AND EMISSION - 10mm	1300mm			
5	HOSE CLAMP - STAINLESS - 8-16mm	4			
6	BRASS - TAIL BARB - 3/8" x 1/4" BSP	2			
7	BRASS - PLUG - HEX INTERNAL SOCKET - 1/4" BSP	2	06404		
8	JOINER - NYLON - 3/8"	1			
9	SET SCREW - HEX - M6 x 20mm	1			
10	WASHER - FLAT - M6	1			
11	WASHER - SPRING - M6	1			
12	SET SCREW - HEX - M8 x 30mm	2			
13	SET SCREW - HEX - M8 x 25mm	1			
14	WASHER - FLAT - M8	5			
15	WASHER - SPRING - M8	1			
16	NUT - NYLOC - M8	2			
17	180mm CABLE TIE	4			
18	OPERATION AND WARRANTY INFORMATION	1			
19	BROWN DAVIS AUTOMOTIVE STICKER	1			

	STAFF INIT	DATE
KIT PACKED BY		
KIT CHECKED BY		

Taking people around Australia since 1978



DATE LAST EDITED: 08/12/2016

Brown Davis Automotive Pty. Ltd.

47 Holloway Drive, Bayswater, Victoria, Australia 3153

Ph: +61 (3) 9762 8722 | Fax: +61 (3) 9762 9829 | Email: info@browndavis.com.au | Web: www.browndavis.com.au

READ BEFORE COMMENCING FITMENT OF FUEL FILTER SYSTEM



- Check contents of the kit before commencing fitment.
- Brown Davis recommends having the fuel system disconnected for as minimal time as possible as some newer vehicles have fuel senses which if left with no fuel for a period of time will prevent the vehicle to start.
- See vehicles owners manual on details on how to bleed the fuel system once fuel filter is installed.

Any questions or information required in relation to the following instructions please do not hesitate to contact Brown Davis head office or one of our distributors.

Phone: +61 (3) 9762 8722

Email: info@browndavis.com.au



WARNING:

**ENSURE A FIRE EXTINGUISHER IS AVAILABLE WHILST WORKING
NEAR EXPOSED FUEL**

FUEL FILTER LOCATION

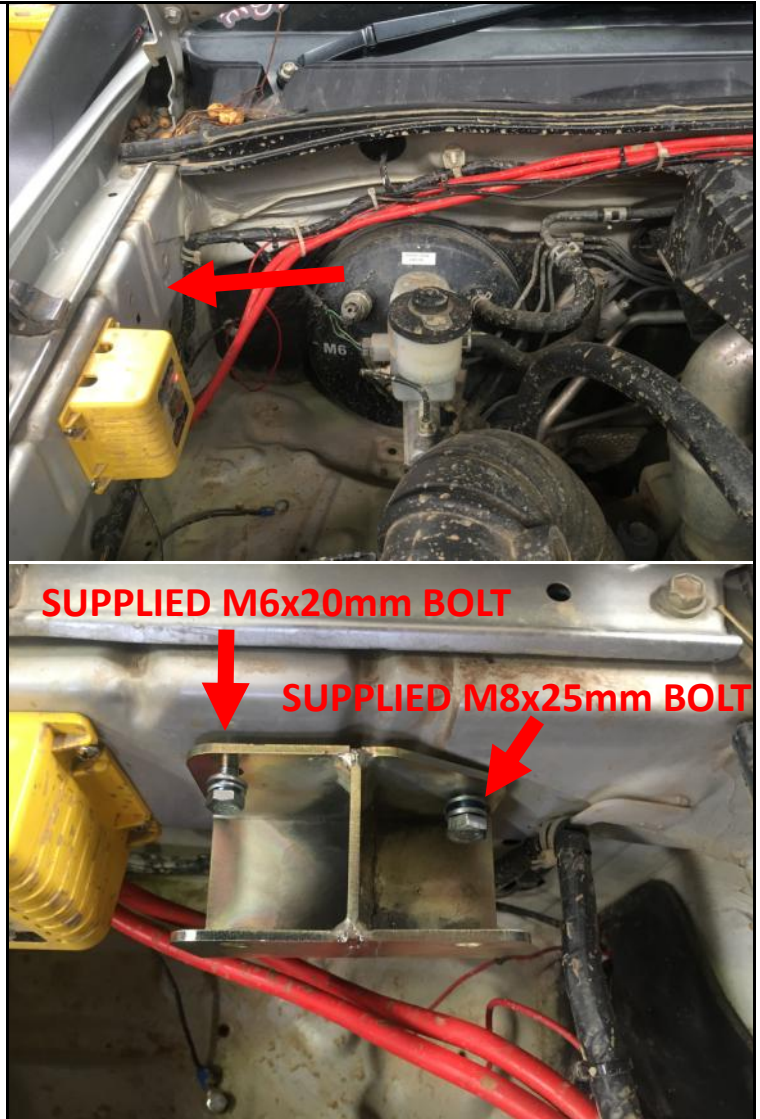


FUEL FILTER KIT



FUEL FILTER FITTING INSTRUCTIONS

1. Fit the supplied fuel filter bracket to the captives on the driver side engine bay rail using the supplied M6x20mm bolt and the supplied M8x25mm bolt, both with spring and flat washers.



- Using thread sealant, teflon tape or the likes on the threads, fit the 2 tail barb brass fittings to the fuel filter, ensuring they are fitted to the correct side (see photo).
- Using thread sealant, teflon tape or the likes on the threads fit the brass plugs to the opposite side of the filter.

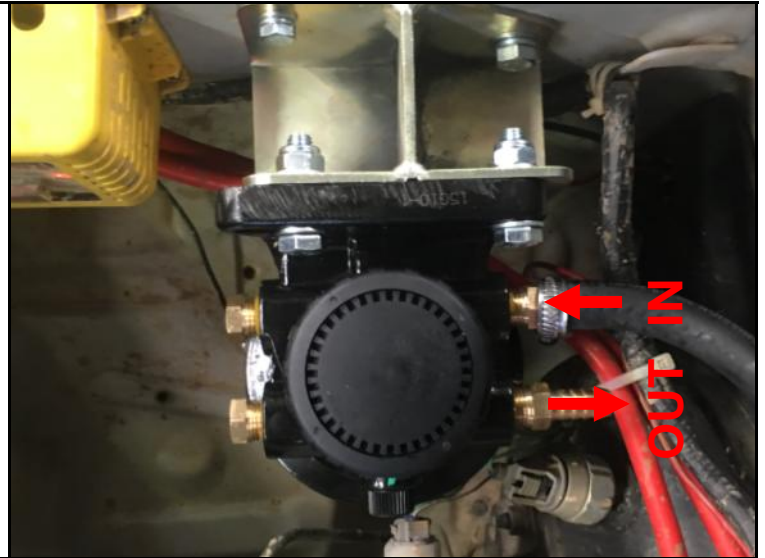
(NB: plugs updated to hex socket variety)



3. Use the supplied M8 hardware to fit the filter to the Brown Davis bracket.



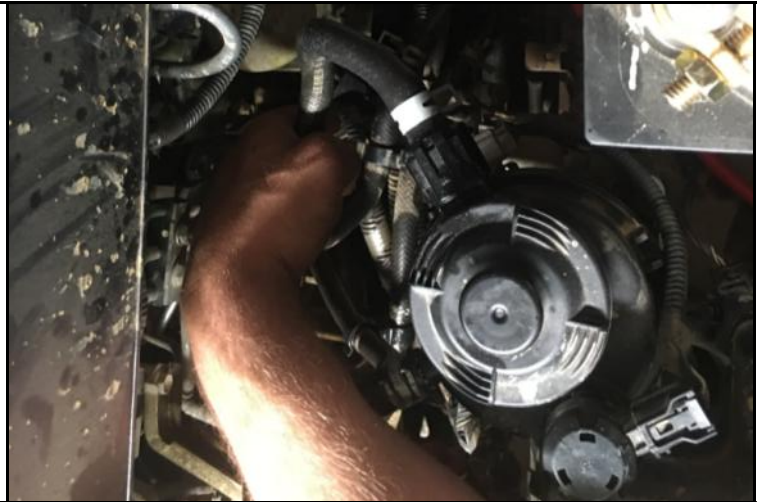
4. Fit the longer of the supplied 10mm hose to the “in” fitting on the new filter, using the arrows on the filter as a guide.
 - Route the hose toward the standard filter via the rear of the engine bay.



5. Fit the remaining hose to the “out” fitting on the new fuel filter. Also run this hose towards the standard filter.



6. Disconnect the rubber pick up hose from the hard line just rear of the filter.



7. Connect the longer of the hoses (connected to the "in" fitting of the new filter) to the hard line using a supplied hose clamp.

- Try to loop the supplied hose comfortably to the hard line to avoid kinking



8. Connect the supplied nylon joiner to the standard line using the O.E.M hose clamp.



9. Using a supplied hose clamp, fit the remaining hose (off the “out” fitting of the new filter) opposite side of the nylon joiner.



10. Use the cable ties supplied to secure the fuel lines to the rear of the engine bay.



11. Refer to the vehicles operations manual to bleed the fuel system.
- Read the Brown Davis fuel filter system operation manual.

