

Brown Davis Automotive Pty. Ltd.

ABN: 72 657 573 544

Copyright Brown Davis Automotive Pty. Ltd. This document contains technical information the property of Brown Davis Automotive Pty. Ltd.

Item #	Description	Quantity	Part No.	P	C
1	FUEL FILTER - ASSEMBLY	1	31863		
2	FUEL FILTER MOUNTING BRACKET	1	FF-MT15		
3	HOSE - FUEL AND EMISSION - 12.7mm	370mm			
4	HOSE CLAMP - STAINLESS - 12-22mm	2			
5	BRASS - ELBOW - 1/2" x 1/4" BSP	2			
6	BRASS - PLUG - HEX INTERNAL SOCKET - 1/4" BSP	2	06404		
7	SET SCREW - HEX - M8 x 30mm	2			
8	WASHER - FLAT - M8	4			
9	NUT - NYLOC - M8	2			
10	OPERATION AND WARRANTY INFORMATION	1			
11	BROWN DAVIS AUTOMOTIVE STICKER	1			

	STAFF INIT	DATE
KIT PACKED BY		
KIT CHECKED BY		

## Taking people around Australia since 1978



DATE LAST EDITED: 21/12/2016

Brown Davis Automotive Pty. Ltd.

47 Holloway Drive, Bayswater, Victoria, Australia 3153

Ph: +61 (3) 9762 8722 | Fax: +61 (3) 9762 9829 | Email: info@browndavis.com.au | Web: www.browndavis.com.au

**READ BEFORE COMMENCING FITMENT OF FUEL FILTER SYSTEM**

- Check contents of the kit before commencing fitment.
- Brown Davis recommends having the fuel system disconnected for as minimal time as possible as some newer vehicles have fuel senses which if left with no fuel for a period of time will prevent the vehicle to start.
- See vehicles owners manual on details on how to bleed the fuel system once fuel filter is installed.

Any questions or information required in relation to the following instructions please do not hesitate to contact Brown Davis head office or one of our distributors.

**Phone:** +61 (3) 9762 8722

**Email:** [info@browndavis.com.au](mailto:info@browndavis.com.au)

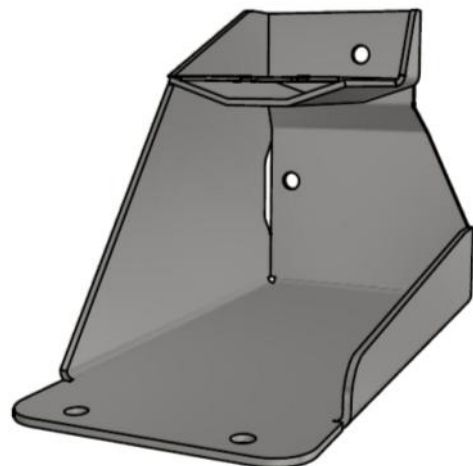
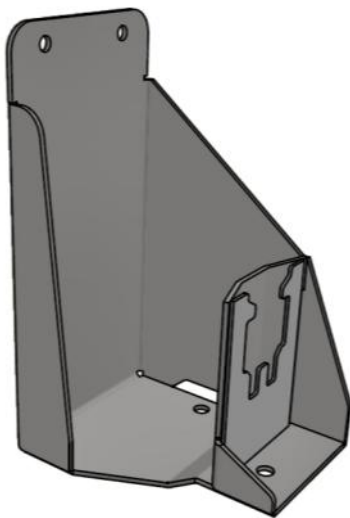
**WARNING:**

**ENSURE A FIRE EXTINGUISHER IS AVAILABLE WHILST WORKING  
NEAR EXPOSED FUEL**

### FUEL FILTER LOCATION



### FUEL FILTER KIT



### FUEL FILTER FITTING INSTRUCTIONS

Remove bolts securing stock fuel filter

Lift filter out and rest near battery



Remove bolts holding stock filter mount

NB: Keep bolts for securing new filter mount



Ensure void is clear to receive new filter mount



Place FF-MT15 fuel filter bracket as shown

Use former mount bolts to locate and secure in place



Re-insert stock filter into matching slot on FF-MT15

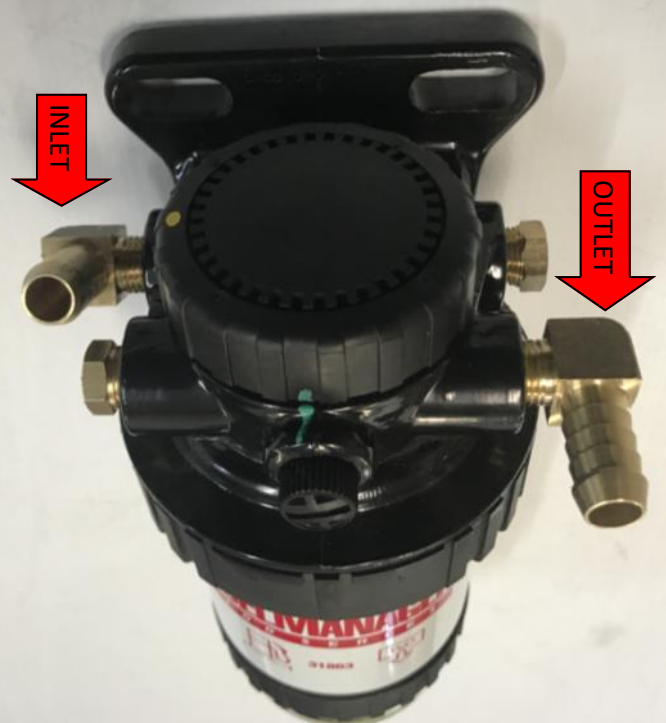


Use thread sealant or teflon tape to fit the 2 elbow brass fittings to the fuel filter as shown



Use thread sealant or teflon tape to fit the brass plugs to the remaining sockets

(NB: plugs updated to hex socket variety)



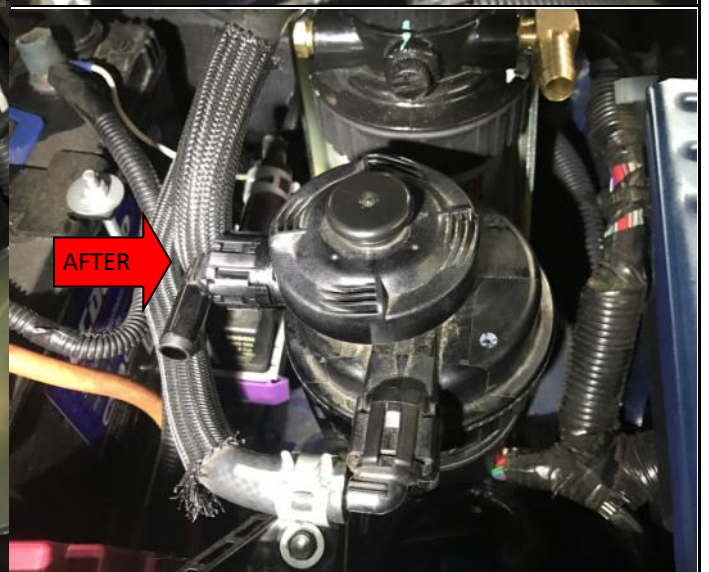
Turning stock filter elbow 90° CCW

\*\*\* Use hose shut-off clamps if required

Disconnect hose from IN elbow

Pry up locking clip to remove elbow

Turn elbow to point forward and re-attach



Place new filter (31863) as shown

Secure using provided M8 set screws, washers and nyloc nuts (fig.1)

Re-connect loose hose to **IN** elbow of new filter (fig.2)



Use hose clamps to connect 12.7mm hose as shown

