

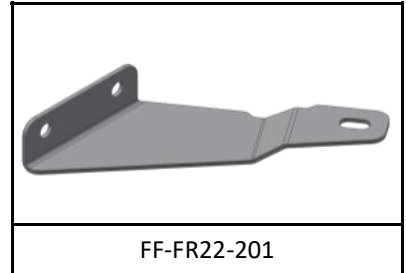
**FORD RANGER 2022 - PRESENT - FUEL FILTER KIT  
 FUEL FILTER PARTS LIST AND FITTING INSTRUCTIONS  
 PART NUMBER: FF-FR22**

Item #	Description	Quantity	Part No.	P	C
1	FUEL FILTER - ASSEMBLY	1	42093		
2	FUEL FILTER MOUNTING BRACKET (PART 1)	1	FF-FR22-201		
3	FUEL FILTER MOUNTING BRACKET (PART 2)	1	FF-FR22-202		
4	FUEL FILTER MOUNTING BRACKET (PART 3)	1	FF-FR22-203		
5	HOSE - FUEL AND EMISSION - 8mm	2250mm (x2)			
6	HOSE CLAMPS - STAINLESS - 8-16mm	4			
7	BRASS FITTING - BARB - 5/16" x 1/4" BSP	2			
8	BRASS FITTING - PLUG - HEX INTERNAL SOCKET - 1/4" BSP	2			
9	FUEL LINE CONNECTOR - 7.89 CLIP - 8mm BARB - STRAIGHT	1	MEP2 7.89 - ID6-180		
10	FUEL LINE CONNECTOR - 7.89 CLIP - 8mm BARB - ELBOW	1	B2 7.89 - ID6-90		
11	FUEL LINE CONNECTOR - 9.49 CLIP - 8mm BARB - STRAIGHT	1	MEP11 9.49 - 1D6-180		
12	FUEL LINE CONNECTOR - 9.49 CLIP - 8mm BARB - ELBOW	1	D2 9.49 - ID6-90		
13	SET SCREW - HEX - M6 x 20mm	3			
14	WASHER - PANEL - M6	6			
15	NUT - NYLOC - M6	3			
16	SET SCREW - HEX - M8 x 30mm	2			
17	WASHER - FLAT - M8	4			
18	NUT - NYLOC - M8	2			
19	SPACER - PANEL x 3mm - M10	1			
20	CABLE TIE - 8"	10			
21	WARRANTY CARD & INFORMATION	1			
22	BROWN DAVIS AUTOMOTIVE STICKER	1			

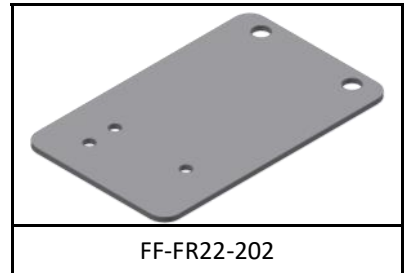
0  
10  
20  
30  
40  
50  
60  
70  
80  
90  
100  
110  
120  
130  
140  
150  
160  
170  
180  
190  
200  
210  
220

	<b>STAFF INIT</b>	<b>DATE</b>
<b>KIT PACKED BY</b>		
<b>KIT CHECKED BY</b>		

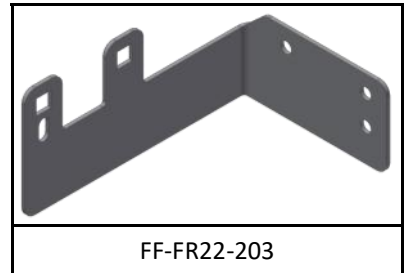
**PART NUMBER: FF-FR22**  
**FUEL FILTER PARTS LIST AND FITTING INSTRUCTIONS**



FF-FR22-201



FF-FR22-202



FF-FR22-203

### READ BEFORE COMMENCING FITMENT OF FUEL FILTER



- Check contents of the kit before commencing fitment.
- Brown Davis recommends having the fuel system disconnected for as minimal time as possible as some newer vehicles have fuel senses which if left with no fuel for a period of time will prevent the vehicle to start.
- See vehicles owners manual on details on how to bleed the fuel system once fuel filter is installed.

Any questions or information required in relation to the following instructions please do not hesitate to contact Brown Davis head office or one of our distributors.

**Phone:** +61 (3) 9762 8722

**Email:** [info@browndavis.com.au](mailto:info@browndavis.com.au)

Under the car disconnect the fuel line fitting on the OEM fuel filter coming from the fuel tank.

On some models this is the red fitting shown on others it has a steel locking band. **Confirm the hose is the feed from the fuel tank before continuing.**

Connect the strait fuel line connector to the hose fitting removed and connect the elbow fuel line connector to the fuel filter. **NOTE: There have been two different fitting sizes used on this car so use the one that suites your vehicle.**





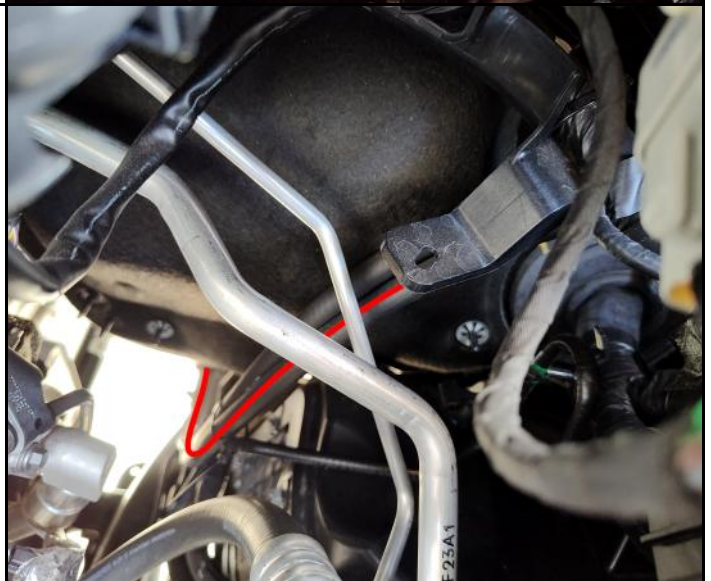
Mark the lose end of the hoses being pushed up help keep track of which hose is connected to the tank's fuel feed line and which hose is connected to the fuel filter. This will make installation easier later on.

Feed the two hoses up into the engine bay as shown in the following images.

Make sure to use the supplied cable ties to secure these hoses away from hot components such as the exhaust or engine and to prevent rubbing.



Feed the hoses up and around the A/C lines as shown towards the firewall.



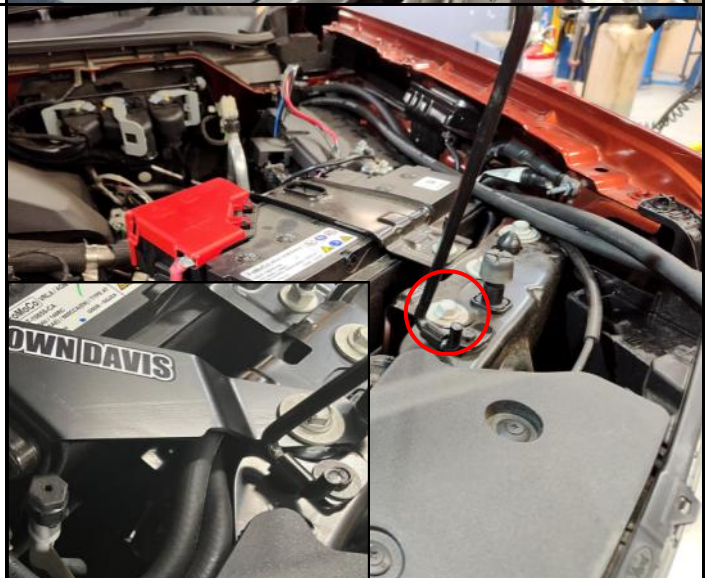
Feed the hoses around the fuse box as highlighted by the red line.

Leave these hoses securely to the side until the filter is fitted.



Remove the factory bolt shown and mount the supplied fuel filter bracket as shown using the 3mm spacer.

**Note:** Leave this bolt loose to assist with installing the fuel filter.





Check to see if your car has the premium package fuse box as circled in the first image.

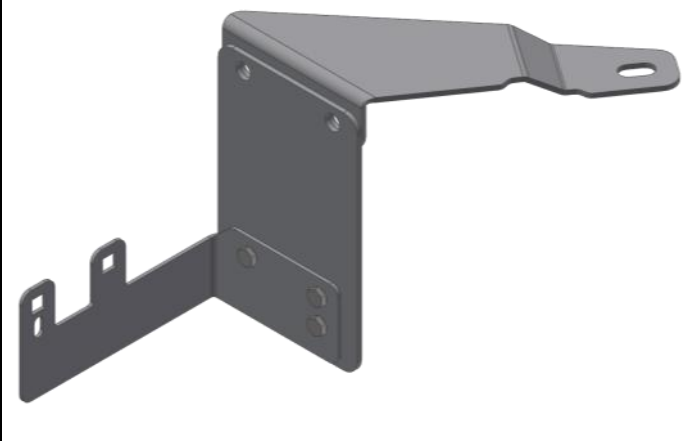
**IF THERE IS NO BOX:** Install the front mounting plate to the side of the battery tray using the supplied M6 hardware as shown in image 2.

**IF THERE IS A BOX:**

Remove the fuse box from it's mounting bracket by prying the clips on the rear of the box using a flathead screwdriver or other prying device .

Lift the fuse box off it's mount to the battery tray and set aside, remove the cable from it's mount on the front of the fuse box.

Install the two front mounting plates to the side of the battery tray using the supplied M6 hardware as shown.



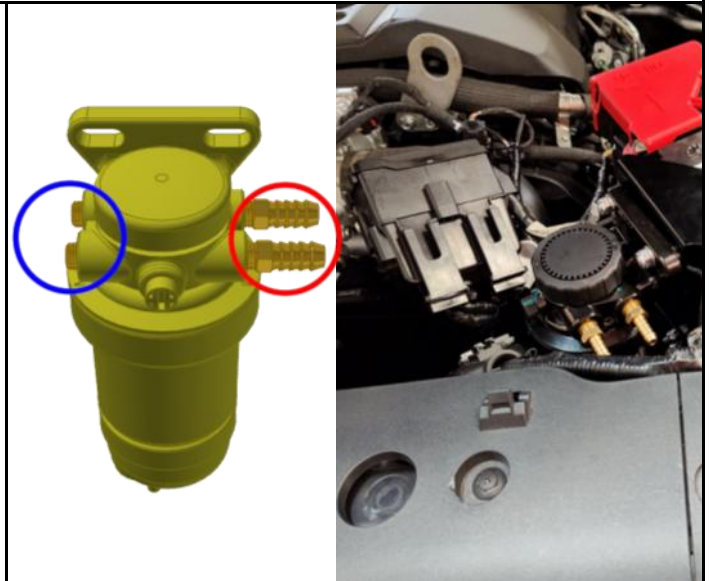
Prepare the fuel filter by installing the fittings as shown in the reference image, using Teflon tape or an appropriate thread sealant.

**BRASS FITTING - BARB - 5/16" x 1/4" BSP - CIRCLED RED.**

**BRASS FITTING - PLUG - 1/4" BSP - CIRCLED BLUE.**

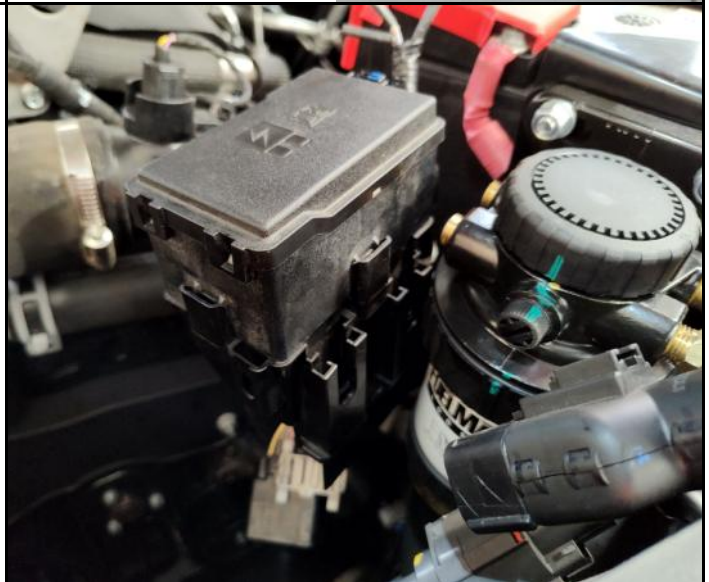
Install the fuel filter on the brackets as shown.

Now tighten the bolts to the rest of the bracket.



**NOTE: THIS STEP IS ONLY FOR THE OPTIONAL PREMIUM PACKAGE.**

Install the fuse box on the mounting bracket as shown, this should be as simple as pressing down on the unit until it clips into place.



Pull the remainder of the hose under the filter bracket between the battery and the front support as shown and trim to a suitable length to fit to the fuel filter.

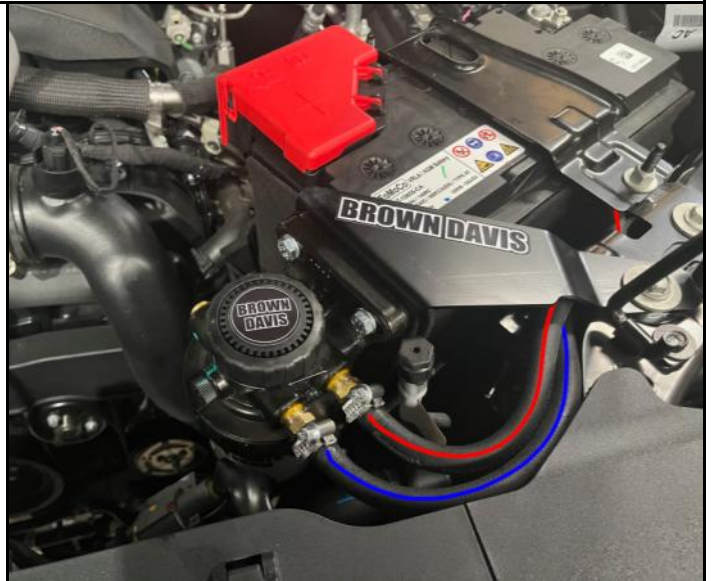




Connect the end of these hoses to the new filter as shown and secure with hose clamps.

Hose marked **red**: Fuel in -> Barb fuel line connector attached to the factory hose on page 3

Hose marked **blue**: Fuel out -> Elbow fuel line connector attached to the factory filter on page 3



If you have the extra fuse box, make sure to secure the wiring loom with cable ties.



Please follow this procedure to remove any air pockets from the fuel line system:

- Double check all fuel line clamps and fuel lines are in a secure location.
- Refer to handbook fuel bleeding procedure.
- Start & idle the engine (approx. 1500rpm) for one minute.

