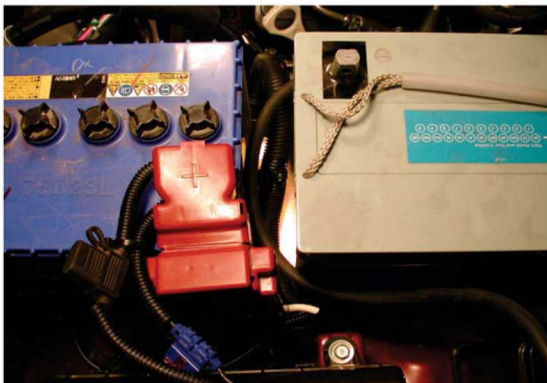
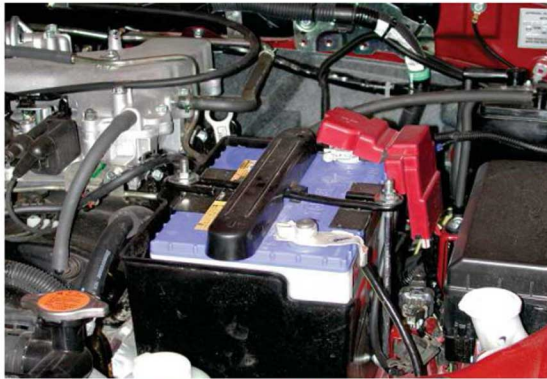


'Piranha Off Road products are not associated in any way with MITSUBISHI Motors Australia Ltd or any of its related companies'

To Suit MITSUBISHI TRITON ML 3.5L V6 & 3.2L TD



PART NUMBER
BTMTV6
APPROX FITTING TIME
1.5 Hours
MAX BATTERY SIZE
Refer Notes
RECOMMENDED TYPE
Cycle Duty
TRAY LOCATION
PSM



PARTS INCLUDED WITH TRAY

- 1 X Tray
- 2 X M6 Hex
- 2 X M6 Washers
- 1 X M6 Long Bolt
- 1 X M8 Short
- 4 X J Bolts
- 2 X Standard Top Mounts

RECOMMENDED ISOLATOR

DBE140SF
or
DBE180-SX

FITTING INSTRUCTIONS

The cradle fits passenger side middle, replacement of original tray.

Remove battery & existing plastic cradle.
 Remove bracket & clips that holds existing loom onto inner guard.
 Remove vacuum hose from engine and vacuum canister in Petrol only
 Loom and hoses need to be re-routed towards firewall.
 Slide tray under loom into position and using M6, bolt into captive next dipstick.
 Using M8 short, bolt into bracket on firewall.
 M6 bolts then bolt into remaining supports ensuring M6 body washers and nuts under guards.
 Place aux battery in rear of tray.
 When replacing original battery, run existing wiring between the two batteries and with Petrol run a longer vacuum hose (not supplied) between the two batteries
Ensure, before closing the bonnet that all items fitted have adequate clearance

* Battery Size Original + Cycle Duty 300mm L & 22 Kgs = V6
 Original + Cycle Duty 265mm L & 16Kg = TD