



FITTING GUIDE

Piranha Off Road Products are not associated in any way with FORD Motor Company Australia Pty Ltd or any of its related companies

Piranha Off Road Product are not associated in any way with MAZDA Australia Pty Ltd or any of its related companies



DETAILS	
Part Number	BTMFC
Approx. Fitting Time	3 Hours
Max Battery Size	Slimline -110 x 290 x 410 or 560mm
Battery Type	Cycle Duty – AGM
Tray Location	Cabin, Behind Rear Seat
Tray Weight / Dimensions	11Kg / 72cm x 37cm x 17cm

To Suit PX, PXII & PXIII FORD RANGER & MAZDA BT50 DUAL CAB - 2011 Onwards

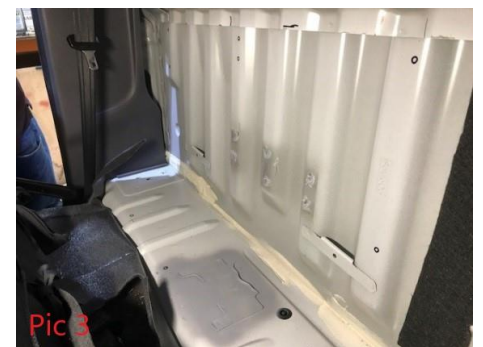
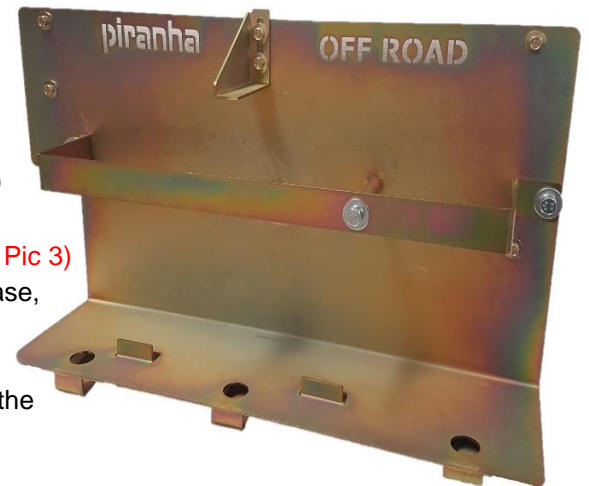
PARTS INCLUDED WITH TRAY			
1	Tray	7	3 x M10 Flat Body Washer
2	Battery Clamp	8	3 x M8 Flat Body Washer
3	Battery Hold Down Bracket	9	3 x M8 Whizlock Nuts
4	1 x Crush Tube	10	9 x M8 Pilot Point Bolts, With Captured Washer 30mm
5	3 x Backing Plates	11	2 x M10 Bolts 30mm
6	3 x M10 Spring Washer	12	1 x M10 Bolt 125mm

Recommended Isolator DBE140SF or DBE180-SX
 Ford – Have dealer turn off “Smart Charge Feature”
 2L Bi-Turbo requires DC/DC
 Piranha strongly recommend the use of a “Low Voltage Cut-out” for all installations if using DBE140SF or DBE180-SX

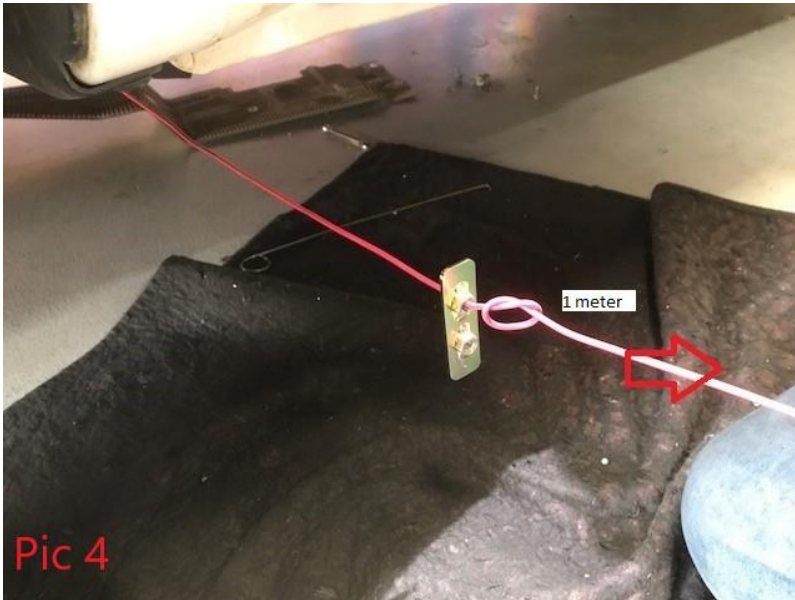
Special Tools Required – Spot Weld Drill Bit

FITTING INSTRUCTIONS

1. Unbolt rear seat and remove to create a working space behind seat.
2. Remove vehicle Jack and tool kit. (Refer Pic 1)
3. Using a spot weld drill (Hole Saw Style works well – see next page. Or alternatively an air hacksaw or similar), to remove Jack & Tool Bag mounting points. Relocate Jack & Tool Bag (Refer Pic 1 & 2) (Some models have a “Trunk Antenna”. Tray will slip up behind module.)
4. Cut back wall lining. (Lining varies between models.) (Refer Pic 5)
5. Grind any rough edges, seal any holes, paint unpainted surfaces. (Refer Pic 3)
6. Place tray in position and mark the 6 holes to the wall & 3 holes to the base, remove tray & using a step drill, drill 10mm holes.
Caution: when drilling wall holes Do Not drill through to Tub.
7. Get under car and remove heat shield around muffler to allow access to the bolts going though the bottom of the tray.
8. Place tray back in position and bolt up.



Please see reverse side for further instructions and fitting hints.



9. Bolt up the 3 x M8 base bolts first using M8 body washers from under the car.

Handy Fitting Hint:

Using a 3 meter length of thin electrical cable thread through the top hole in the middle of the tray & by getting under car with a hooked rod, pull cable through to ground. Leaving a meter of cable trailing, form a knot behind the 85mm backing plate. (Refer Pic 4)

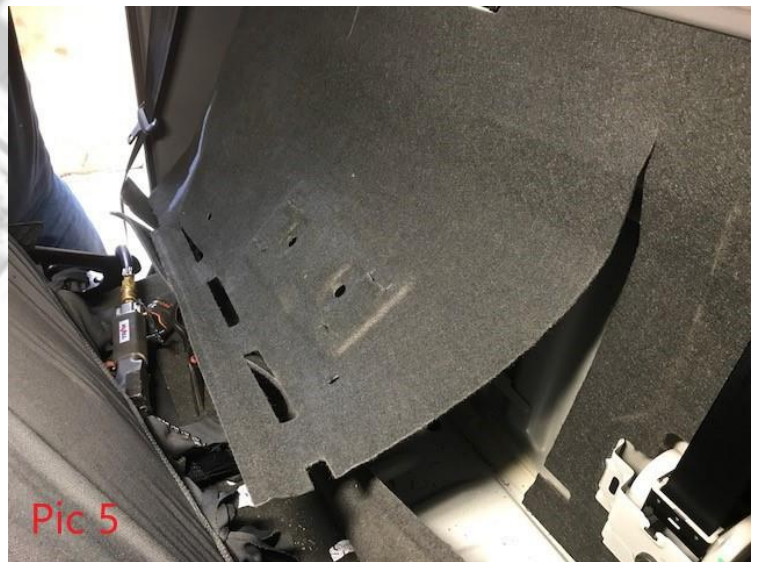
10. Pull cable through from inside car until the backing plate is firmly behind the back panel in line with the top. Place the battery hold down bracket in place over the middle two holes. Now use a screwdriver to locate and fit bolt to bottom hole, do up firmly but do not fully tighten yet.

Recommendation: Coat backing plates with a thin film of silicone.

- 11. Pull cable back and undo knot. Fit the top bolt to the middle bracket. Now repeat for the remaining backing plates using the 120mm long backing plate for the driver's side first, and then the 222mm long plate for the passenger side.
- 12. Now that all bolts are installed tighten all 9 bolts, Refit heatshield over muffler and Re-secure the back seat.
- 13. Fit battery to tray, either 100Ah or 150+Ah battery with the terminals located to the centre of the vehicle. (Depending on the height of the battery selected, you may need to remove the bottom bolt from the hold down clamp and swing it sideways to enable enough clearance to get battery into tray). Lower the battery hold down bracket firmly on top of battery and tighten bolts. Secure the battery clamp in place with 2 x M10 bolt with spring washer & flat washer. If using a smaller battery, use the 125mm long M10 bolt with crush tube, spring washer & flat washer to prevent sideways movement.



The seat will require a firm push to lock back in place.



The Removed Jack/Tool Bag Mounts



Spot Weld Drill Bit